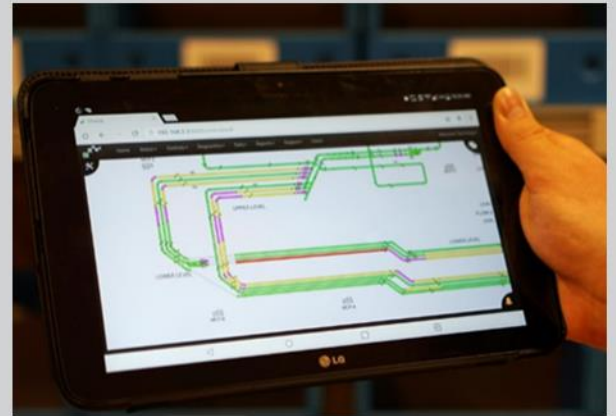
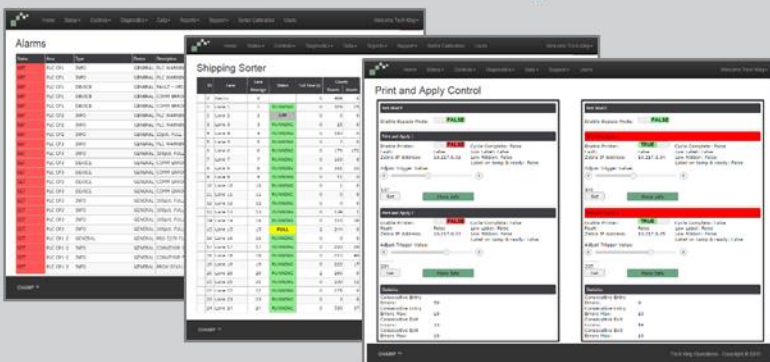


## CHAMP™ System Interface

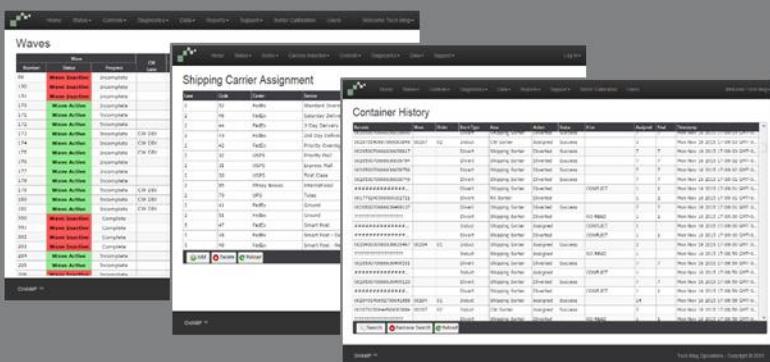
*Real-time web tools to monitor productivity, status, and resolve issues quickly to get the most from your material handling system*

Having the right information at the right time is critical for operations to meet the ever-increasing distribution and fulfillment demands. The CHAMP™ Warehouse Control System (WCS) provides a web-based intelligent display that puts those tools at your fingertips.

### Real-Time Web-Based Visibility and Control



### Business Analytics and Historical Data

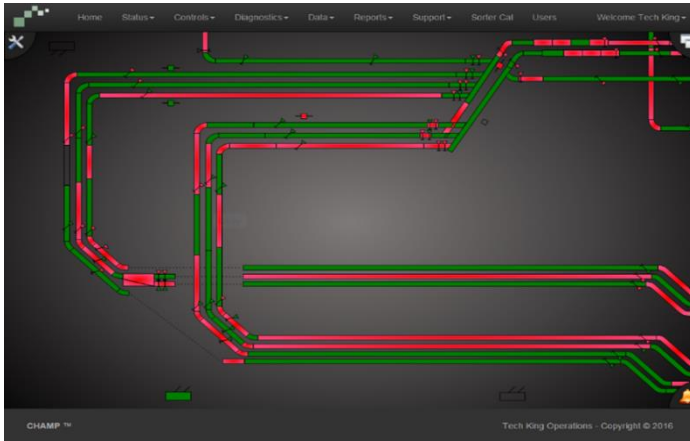


### Features & Benefits

- Real-time secure web-based visibility of system
- Includes graphical system status, business analytics, troubleshooting tools, and historical data
- Pan and zoom features provide easy navigation of the system with drill down to equipment and device details
- Connects with system host software and most common devices found in warehouses including PLCs, scanners, scales, and printers
- Tools to take control of your operations – without accessing PLC programming software
  - Carton Tracking and Lookup
  - Scanner Statistics
  - Electrical Device Details
  - I/O Diagnostics and Debugging
- Diagnostic capabilities natively extend to Allen-Bradley PLCs, no need for expensive third-party software

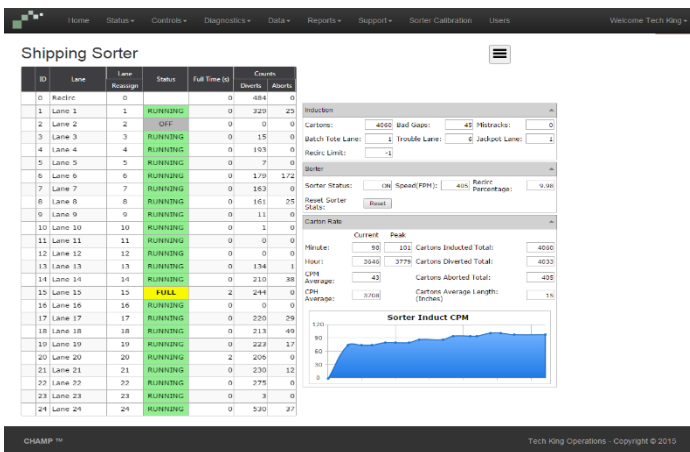
Uncommonly smart solutions

www.trewautomation.com | +1-800-527-TREW



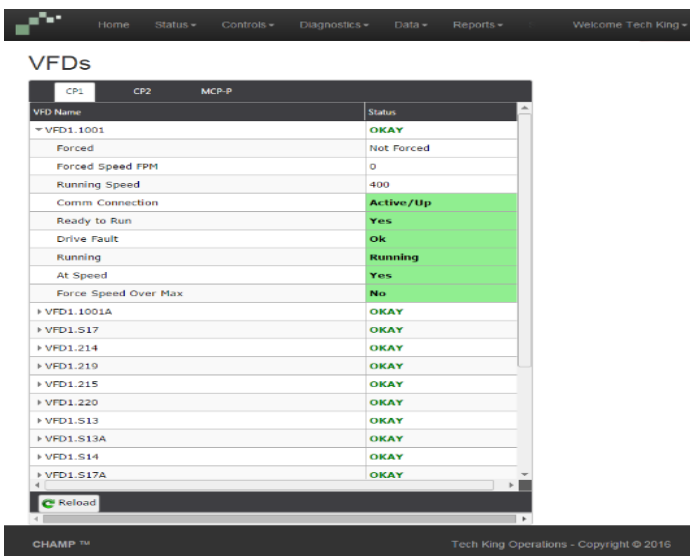
### Graphical real-time colored system status

- Easy pan and zoom navigation
- Alarm status information
- System drill down to equipment and device details
- Navigation to operational information such as forecast counts, carton look ups, etc.



### Real-time operational information

- Wave status
- Production forecast counts
- Container history
- Sorter and merge performance data
- Scanner statistics
- Control stations

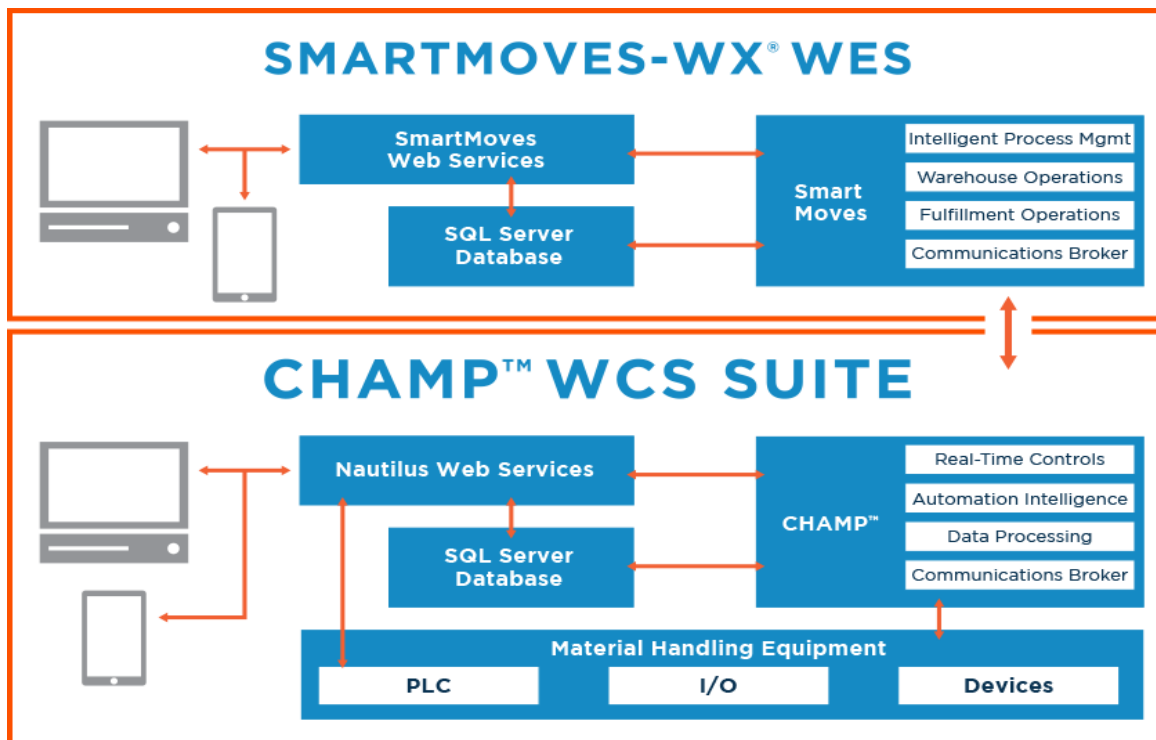


### Maintenance and support tools

- Real-time alarm information
- Event history
- Device communications
- VFD management
- Remote I/O network status
- Electrical device documentation and schematics
- ***I/O debugging without the need for PLC programming software***

## Specifications

- On-site VM environment provided by client with Microsoft Windows Server 2016 with a Microsoft SQL-Server 2016 Standard database
- Server specs to match or exceed:
  - HP ProLiant DL380 G9 2U Rack Server or equivalent
  - Microsoft Windows Sever 2016 Standard
  - 3 Client Licenses
  - Microsoft SQL-Server 2016 Standard Database Server
  - Network Interface Cards
  - Processor Model: Intel Xeon E5-2620
  - Number of Processors: 1
  - Number of Cores: 8



## Browser Support

### Desktop Clients

- Microsoft Edge
- Internet Explorer 11
- Mozilla Firefox
- Google Chrome
- Apple Safari 10+

### Mobile Clients

- iOS 10.0 native (older version use safari)
- Android: Chrome

**For more information, contact Trew**

+1-800-571-TREW (8739)

info@trewautomation.com