

ECC Conveyor

Series K 2.0 Modules

Controls Platform: AC Motor Powered

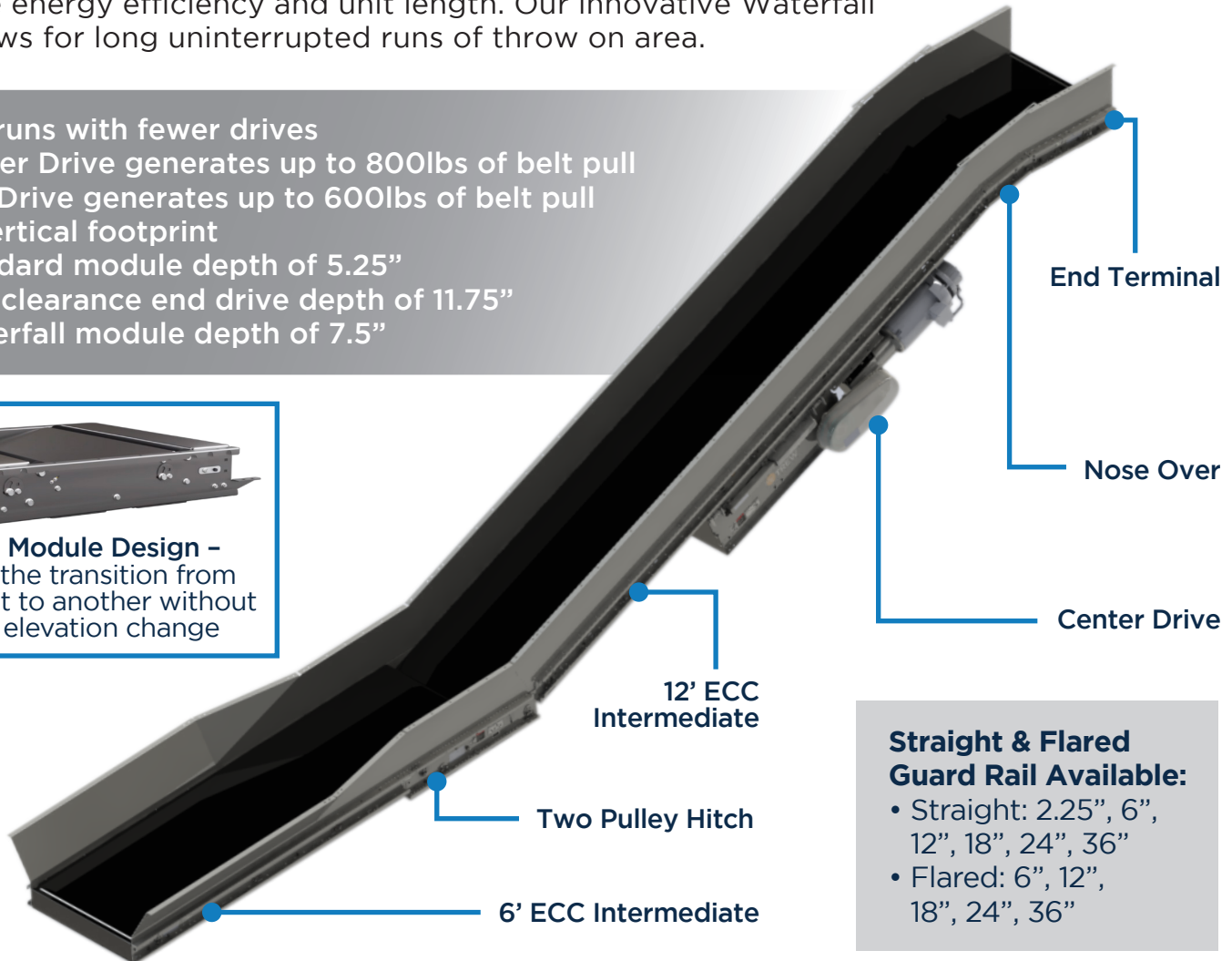
POWERED BY
TREW[®]

ECC (Empty Carton Conveyor) modules can be used in package handling, raw material handling and small part handling - such as polybags and jiffys. They can convey any flat-bottomed product in a large variety of sizes, weights and compositions - ideal for corrugate, dunnage, boxes, and bags. Our beds use a combination of slider pan with rollers in order to maximize energy efficiency and unit length. Our innovative Waterfall module allows for long uninterrupted runs of throw on area.

- Longer runs with fewer drives
 - » Center Drive generates up to 800lbs of belt pull
 - » End Drive generates up to 600lbs of belt pull
- Small vertical footprint
 - » Standard module depth of 5.25"
 - » Low clearance end drive depth of 11.75"
 - » Waterfall module depth of 7.5"



Waterfall Module Design -
Allows for the transition from one ECC unit to another without requiring elevation change



Straight & Flared Guard Rail Available:

- Straight: 2.25", 6", 12", 18", 24", 36"
- Flared: 6", 12", 18", 24", 36"

KEY FEATURES AND BENEFITS

- **Standard belts:** Longitudinal Ribbed, Smooth Top
standard belt width is BF minus 2"
others available upon request
- **Modular bottom guards**
 - » Sit flush with bottom of conveyor
 - » lightweight design allows for installation by 1 person
- Drives come with or without brakes
- Impact wrench accessible
- Belt path routing labels included
- Maximum overall length: 250' standard*
**Longer length is application dependent*
- Max Incline Angle: 15° - 25°

ECC Conveyor

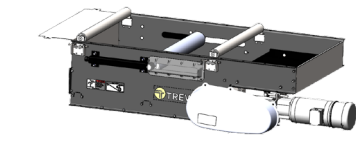
Series K 2.0 Modules

Controls Platform: AC Motor Powered

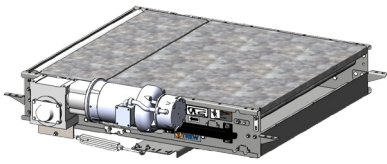


Specifications:

- Nominal between frame (BF) widths: 21", 27", 33", 36", 39", 45"
- Motor HP: 1, 2, 3, 4, 5, 7.5
- Speeds: 60 - 300 FPM
- Standard color: Metallic Silver RAL 9022
- Optional modules: Low Clearance End Drive, Knife Edge End Terminal, Two-Pulley Hitch, In-line Waterfall Transition, Auxiliary Mechanical Take-Up



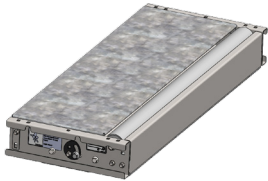
SERIES K ECC CONVEYOR - CENTER DRIVE							
Part #	Width (BF)	Drive	Hand	Speed (FPM)	HP	Brake	Color
TR12001 (63" Long)	21, 27, 33, 36, 39, 45	BLT, CH	LH, RH	60, 90, 120, 150, 180, 210, 240, 300	1, 2, 3, 5, 7.5	BR, NB	RAL 9022 RAL 7035



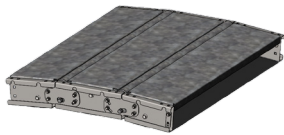
SERIES K ECC CONVEYOR - END DRIVE							
Part #	Width (BF)	Side Channel	Hand	Speed (FPM)	HP	Brake	Color
TR12002 (54" Long)	21, 27, 33, 36, 39, 45	RSH, RSL	LH, RH	60, 90, 120, 150, 180, 210, 240, 300	1, 2, 3, 5, 7.5	BR, NB	RAL 9022 RAL 7035



SERIES K ECC CONVEYOR - INTERMEDIATE				
Part #	Width (BF)	Roller C-C"	Roller Type	Color
TR12011 (36" Long) TR12012 (72" Long) TR12013 (108" Long) TR12014 (144" Long)	21, 27, 33, 36, 39, 45	3C, 6C, 9C	SS	RAL 9022 RAL 7035



SERIES K ECC CONVEYOR - END TERMINAL			
Part #	Width (BF)	Side Channel	Color
TR12015 (18" Knife Edge) TR12016 (18" Standard)	21, 27, 33, 36, 39, 45	RSH	RAL 9022 RAL 7035



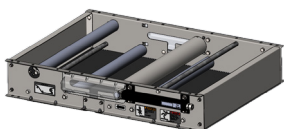
SERIES K ECC CONVEYOR - NOSE OVER		
Part #	Width (BF)	Color
TR12017 (36" Long RSH)	21, 27, 33, 36, 39, 45	RAL 9022, RAL 7035



SERIES K ECC CONVEYOR - TWO-PULLEY HITCH			
Part #	Width (BF)	Side Channel	Color
TR12020 (43" Long)	21, 27, 33, 36, 39, 45	RSH	RAL 9022, RAL 7035



SERIES K ECC CONVEYOR - IN-LINE WATERFALL			
Part #	Width (BF)	Side Channel	Color
TR12021 (36" Long)	21, 27, 33, 36, 39, 45	RSH	RAL 9022, RAL 7035



SERIES K ECC CONVEYOR - AUXILIARY MECHANICAL TAKE-UP		
Part #	Width (BF)	Color
TR12022 (48" Long)	21, 27, 33, 36, 39, 45	RAL 9022, RAL 7035