

Belt Conveyor

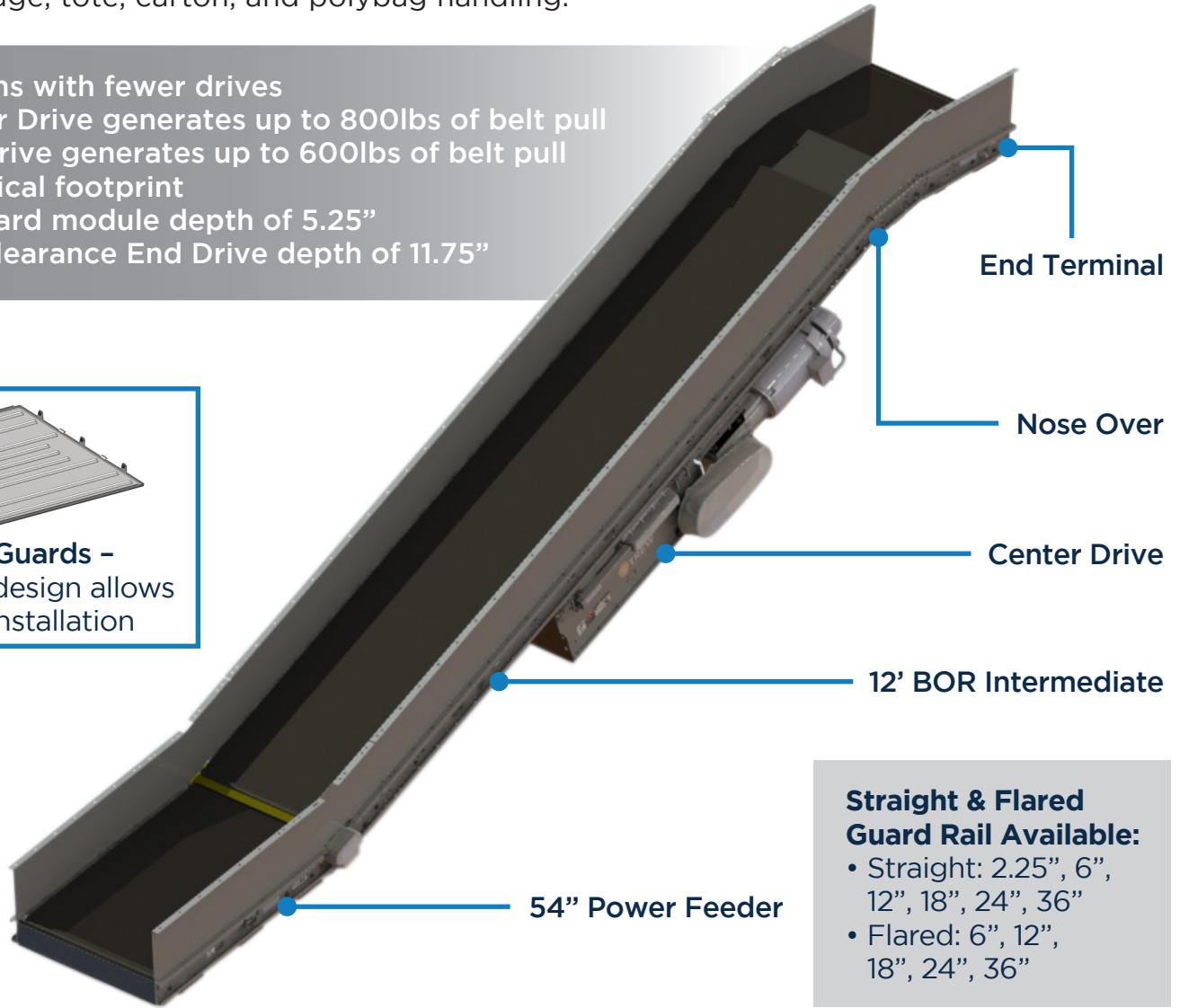
Series K 2.0 Modules

Controls Platform: AC Motor Powered

POWERED BY
TREW[®]

BOR (Belt On Roller) and BOS (Belt On Slider) modules can be used in transportation, incline/decline, merging, gapping, sortation, and scanning applications. They can convey any flat-bottomed product in a large variety of sizes, weights, and compositions - ideal for package, tote, carton, and polybag handling.

- Longer runs with fewer drives
 - » Center Drive generates up to 800lbs of belt pull
 - » End Drive generates up to 600lbs of belt pull
- Small vertical footprint
 - » Standard module depth of 5.25"
 - » Low clearance End Drive depth of 11.75"



Straight & Flared Guard Rail Available:

- Straight: 2.25", 6", 12", 18", 24", 36"
- Flared: 6", 12", 18", 24", 36"

KEY FEATURES AND BENEFITS

- Center and Low Clearance End Drives come with or without brakes
- Standard belts: Longitudinal Ribbed, Smooth Top, Quad Top, Slick Top
standard belt width is BF minus 2" others available upon request
- Updated belt path routing and tensioning labels
- Maximum overall length: 300'+ for BOR, 200'+ for BOS (800lbs max belt pull)
longer length is application dependent
- Inclines available up to 25°
- All hardware is impact wrench accessible

Belt Conveyor

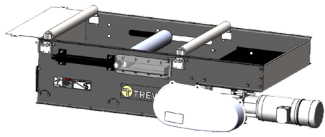
Series K 2.0 Modules

Controls Platform: AC Motor Powered

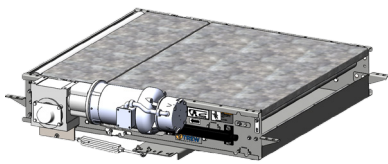


Specifications:

- Nominal between frame (BF) widths: 15", 21", 27", 33", 36"
- Motor HP: 1, 2, 3, 4, 5, 7.5
- Speeds: 60 - 300 FPM
- Standard color: Metallic Silver RAL 9022
- Optional modules: Low Clearance End Drive, Knife Edge End Terminals, Auxiliary Mechanical Take-Up



SERIES K BELT CONVEYOR - CENTER DRIVE							
Part #	Width (BF)	Drive	Hand	Speed (FPM)	HP	Brake	Color
TR12001 (63" Long)	15, 21, 27, 33, 36, 39, 45	BLT, CH	LH, RH	60, 90, 120, 150, 180, 210, 240, 300	1, 2, 3, 5, 7.5	BR, NB	F9022 F7035



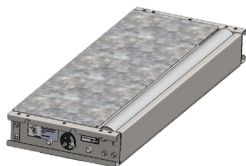
SERIES K BELT CONVEYOR - END DRIVE							
Part #	Width (BF)	Side Channel	Hand	Speed (FPM)	HP	Brake	Color
TR12002 (54" Long)	15, 21, 27, 33, 36, 39, 45	RSH, RSL	LH, RH	60, 90, 120, 150, 180, 210, 240, 300	1, 2, 3, 5, 7.5	BR, NB	F9022 F7035



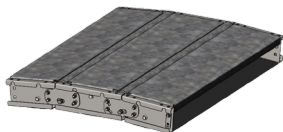
SERIES K BELT CONVEYOR - BELT ON ROLLER (BOR) INTERMEDIATE					
Part #	Width (BF)	Side Channel	Roller C-C"	Roller Type	Color
TR12003 (36" Long) TR12004 (72" Long) TR12005 (108" Long) TR12006 (144" Long)	15, 21, 27, 33, 36	RSH, RSL	3C, 6C, 9C	SS	F9022 F7035



SERIES K BELT CONVEYOR - BELT ON SLIDER (BOS) INTERMEDIATE			
Part #	Width (BF)	Side Channel	Color
TR12007 (36" Long) TR12008 (72" Long) TR12009 (108" Long) TR12010 (144" Long)	15, 21, 27, 33, 36	RSH, RSL	F9022 F7035



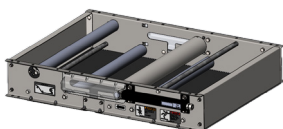
SERIES K BELT CONVEYOR - END TERMINAL			
Part #	Width (BF)	Side Channel	Color
TR12015 (18" Knife Edge) TR12016 (18" Standard)	15, 21, 27, 33, 36, 39, 45	RSH, RSL	F9022 F7035



SERIES K BELT CONVEYOR - NOSE OVER		
Part #	Width (BF)	Color
TR12017 (36" Long RSH)	15, 21, 27, 33, 36	F9022, F7035



SERIES K BELT CONVEYOR - POWER FEEDER / TAILS						
Part #	Width (BF)	Drive	Hand	Ratio	Feeder/Tail	Color
TR12018 (54" Long) TR12019 (72" Long)	15, 21, 27, 33, 36	BLT, CH	LH, RH	1:15T01	PF, PT	F9022 F7035



SERIES K BELT CONVEYOR - AUXILIARY MECHANICAL TAKE-UP		
Part #	Width (BF)	Color
TR12022 (48" Long)	15, 21, 27, 33, 36, 39, 45	F9022, F7035