

V-Belt Conveyor

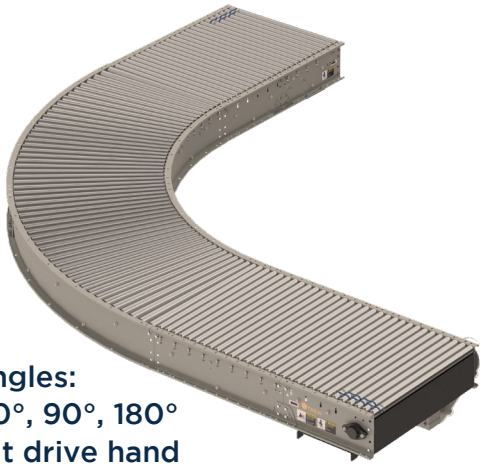
High-Speed Live Roller

AC Motor Powered

POWERED BY

TREW[®]

Dependable, easy to maintain high-speed live roller curves, junctions, spurs, and skews for the highest capacity systems in the market, performing at levels well beyond what traditional motor driven roller designs are capable of. Designs focus on quality of product handling using true tapered curves, tight roller centers, and ease of maintenance with easy access V-belt pressure and tensioning devices.



V-Belt Curve

- Available angles: 30°, 45°, 60°, 90°, 180°
- Independent drive hand available



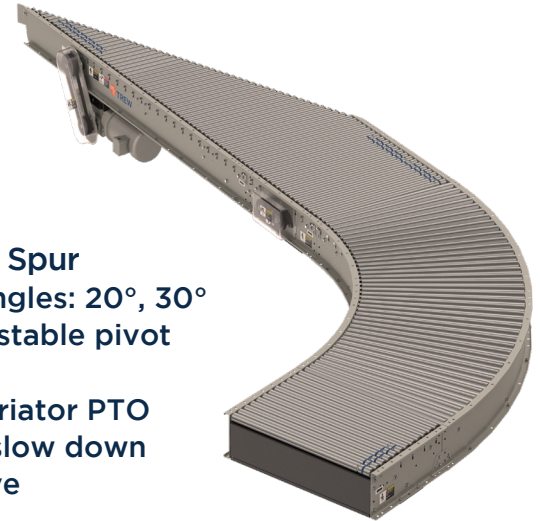
V-Belt Skew

- Optimized for smaller product
- Belt runs perpendicular to rollers - extends belt life



V-Belt Merge Spur

- Available angles: 30°, 45°
- Height adjustable brackets available to merge beds



V-Belt Divert Spur

- Available angles: 20°, 30°
- Height adjustable pivot brackets
- Optional variator PTO section to slow down before curve

KEY FEATURES AND BENEFITS

- Curve modules have true tapered rollers that enable consistent carton position
- Belt pressure adjustable pulleys from exterior of conveyor
- Belt life is maximized through belt path that is free from back bends
- Speeds from 60 - 700 FPM

- High speed rollers protect against frame boring
- Tool-less quick to adjust belt tension device
- Across-The-Line Start or VFD compatible
- Easy installation and maintenance
- Design delivers consistent drive pressure and consistent product handling

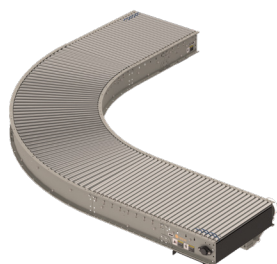
V-Belt Conveyor

High-Speed Live Roller

AC Motor Powered

Specifications:

- Between frame (BF): 21", 27", 33", 36", 39"
- Motor HP: 1, 2, 3
- Speeds: 60 - 700 FPM
- Product Weight: 0.5 - 75 lbs
- Product Length: 6" - 48"
- Minimum Product Height: 0.5"
- Temperature: 32° - 104°F
- 2" Roller center standard
- "B" Section V-belt
- Take-Up: Spring/Mechanical
- 10" Deep rail profile

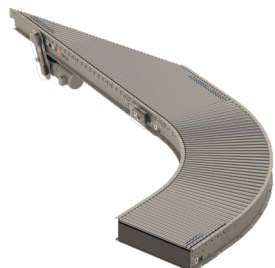


V-BELT CONVEYOR - CURVE (TR#10001-10011)					
Width (BF)	Speed (FPM)	HP	Drive Hand	Curve Direction*	Side Channel
21, 27, 33, 36	60 - 700	1 - 3	LH, RH	LH, RH	RSH
Roller C-C"	Roller Type	Roller Coating	Curve Angle		Color
2C	SS, HS	NC	15, 20, 30, 45, 70, 90		RAL 9022 RAL 7035

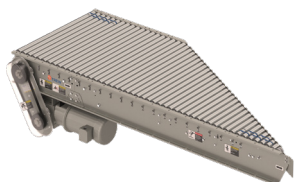
* V-Belt runs inside of curve



V-BELT CONVEYOR - SKEW (TR#10015-10018, 10026-10036)									
Width (BF)	Length	Speed	HP	Skew Direction	Side Channel	Roller C-C"	Roller Type	Roller Coating	Color
21	9, 14	60 - 700	1 - 3	LH, RH	RSH	2C	SS, HS	NC	RAL 9022 RAL 7035
27	12, 15, 17								
33	12, 15, 20								
36	12, 15, 18, 22								
39	15, 18, 21, 24								



V-BELT CONVEYOR - DIVERT SPUR (TR#10003, 10004, 10009, 10010, 10012, 10013, 10025)									
Degree	Width (BF)	Speed	Roller Type	Curve Angle	Divert Hand	Side Channel	Roller C-C"	Roller Coating	Color
30	21, 27, 33, 36, 39	60 - 450	SS, HS	60	LH, RH	RSH	2C	NC	RAL 7037 RAL 7035
20	21, 27, 33, 36	300 - 700	HS	70					



V-BELT CONVEYOR - MERGE SPUR (TR#10001 - 10005, 10014)					
Width (BF)	Speed (FPM)	HP	Drive Hand	Merge Hand*	Side Channel
21, 27, 33, 36	60 - 700	1 - 3	LH, RH	LH, RH	RSH
Roller C-C"	Roller Type	Roller Coating	Merge Angle		Color
2C	SS, HS	NC	30, 45		RAL 9022 RAL 7035

* RH Merge Hand shown in picture