

Trew's Sliding Shoe Sorter is a high speed, positive divert sorter designed to consistently and gently divert cartons, totes, jiffys, polybags, and other product of various sizes and configurations. As a product is diverted, TrewSort's shoe-face has energy absorption and noise reduction material creates gentle product control and positioning. The flexible design allows for additional diverts to be added post-installation. AI self-learning actuators drastically improves uptime with constant monitoring of divert performance. Robust divert design allows for extended component life.

- Minimized slot gap - increased product handling & sorter performance
- All electric 24V platform



Greater Product Handling
3-Prong sub-surface shoe face designed for more consistent and gentle contact with a wide variety of product types

KEY FEATURES AND BENEFITS

- Minimum product specifications: 6" x 4" x 0.22"
- Maximum length of 600+ feet
- Speeds up to 600 FPM
- 20° or 30° divert options
- 27 & 36 effective width options
- Capable of handling cartons, totes, jiffys and polybags
- Durable 4-bolt quick replacement divert assembly
- Off-the-shelf divert components
- Sound dampening considerations
- Transition strips maintain product orientation and control
- Easy installation and maintenance

TrewSort™

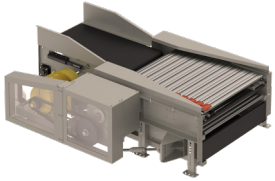
Linear Sortation Shoe Sorter

All Electric

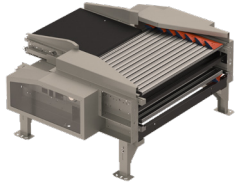


Specifications:

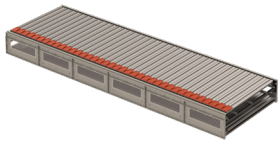
- Between frame (BF): 27", 36"
- Motor HP: 10 - 60
- Speeds: 300 - 600 FPM
- Product Weight: 0.5 - 75 lbs
- Product Length: 6" - 62"
- Minimum Product Height: 0.5"
- Temperature: 32° - 104°F
- Off-the-shelf Divert Control Module (DCM)
- Actuation: Electric
- Take-Up: Catenary
- Chain Type: RC100
- Easily accessible cable raceway



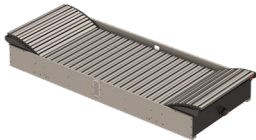
TREWSort™ - DRIVE						
Part #	Effective Width (EW)	Hand	Divert Hand	HP	Speed (FPM)	Color
TR14001	50, 59	RH	RHD, LHD, DSD	10, 15, 20, 25, 30, 40, 50, 60	300, 350, 400, 450, 500, 550, 600, 650, 700	RAL 7035 RAL 7037
TR14002	50, 59	LH	RHD, LHD, DSD	10, 15, 20, 25, 30, 40, 50, 60	300, 350, 400, 450, 500, 550, 600, 650, 700	RAL 7035 RAL 7037



TREWSort™ - IDLER				
Part #	Effective Width (EW)	Hand	Divert Hand	Color
TR14003	27, 36	RH	RHD, LHD, DSD	RAL 7035 RAL 7037
TR14004	27, 36	LH	RHD, LHD, DSD	RAL 7035 RAL 7037



TREWSort™ - INTERMEDIATE				
Part #	Effective Width (EW)	OAL	Type	Color
TR14005	27, 36	96"	STD, RET, EXP, CAT1, CAT2	RAL, 7035, RAL 7037
TR14006	27, 36	64"	STD, RET, EXP, CAT1, CAT2	RAL, 7035, RAL 7037
TR14007	27, 36	32"	STD, RET, EXP, CAT1, CAT2	RAL, 7035, RAL 7037



TREWSort™ - CATENARY			
Part #	Effective Width (EW)	Depth	Color
TR11025 (143" Long)	27, 36	15, 17, 21	RAL 9022, RAL 7035

TREWSort™ - DIVERT KIT		
Part #	Effective Width (EW)	Hand
1008744	27, 36	LHD, RHD
1008749	27, 36	LHD, RHD

FIELD KITS		
Part #	Part Name	Description
1009284	Power Supply	Provides power to switch actuators.
1008922	Long Range Photoeye	(1) Long range photoeye recommended per 250ft. Monitors space above shoe path and shuts down sorter if anomaly is detected.
1008928 1009009	Debris Detection	Protects the sorter by detecting debris anomalies inside of the sorter. Recommended (1) per 150ft.
1009246	Oiler	Oil reservoir kit that consistently administers oil on chain using a brush.