

POWERED BY

**TREW<sup>®</sup>**

# QUICK QUOTE CATALOG

## *ACCESSORY MODULES*

Series 1500 - Electrical & Mechanical



1.800.571.8739

[poweredbyTREW.com](http://poweredbyTREW.com)

[info@trewautomation.com](mailto:info@trewautomation.com)

MDR Standard Angle End Stop	1
MDR Standard Blade Stop	3
MDR Standard End Cover Plate	5
MDR Standard End	7
40 Amp Power Module	9
80 Amp Power Module	13

# STANDARD ANGLE END STOP

## ACCESSORY MODULE - Series 1500

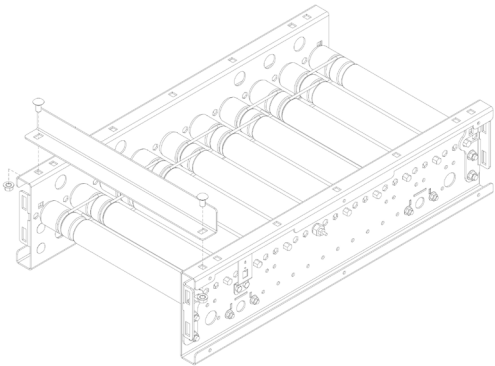


Standard angle end stop can help hold items at the end of a conveyor run or at any point along a conveyor line.



### KEY FEATURES AND BENEFITS

- End stops are made of industrial strength welded and bolted steel
- Modular bolt together design
- Resilient and durable construction
- Hardware Included



### SERIES 1500, ANGLE END STOP

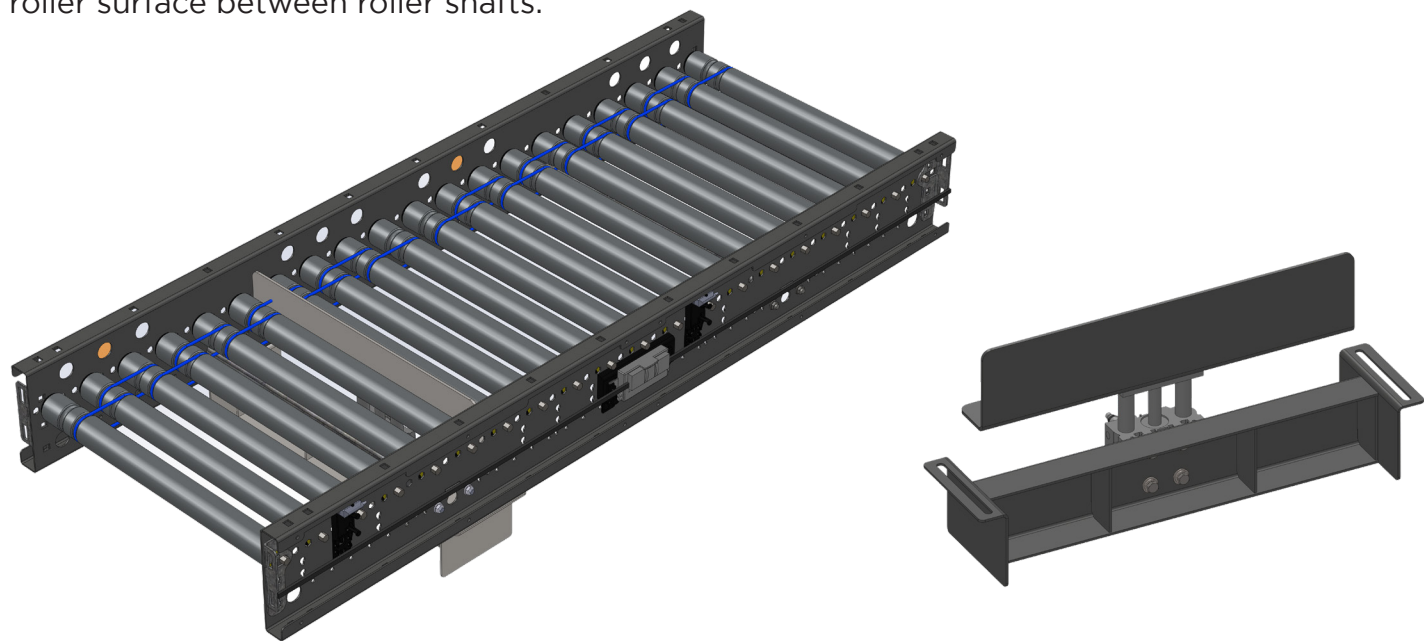
QUICK QUOTE#	Description
A031501	ANGLE END STOP - 15IN BF
A032101	ANGLE END STOP - 21IN BF
A032401	ANGLE END STOP - 24IN BF
A032701	ANGLE END STOP - 27IN BF

# STANDARD BLADE STOP

## ACCESSORY MODULE - Series 1500

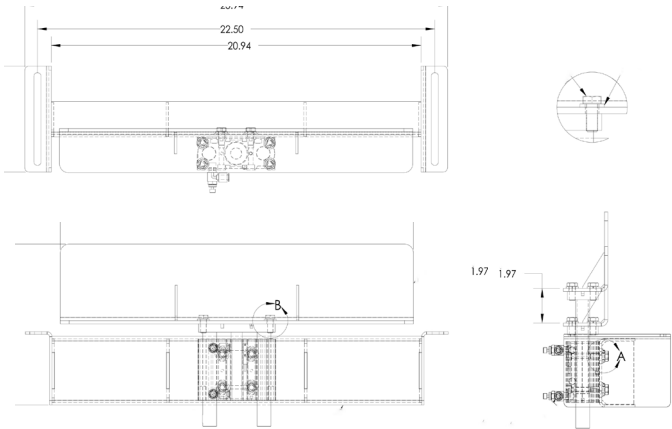


Standard blade stop assemblies allow you to start and stop product traffic without stopping and starting conveyor motors. Blade stops are pneumatically (on command) operated and mounted beneath the conveyor surface with a stainless steel blade which extends above and retracts below the roller surface between roller shafts.



**KEY FEATURES AND BENEFITS**

- Blade stops assemblies are made of industrial strength welded and bolted steel
- Banjo Flow Control
- Using Compact Guide Slide, Magnetic Pistons, and Slide Bearings
- Modular bolt together design
- Resilient and durable construction
- Hardware Included



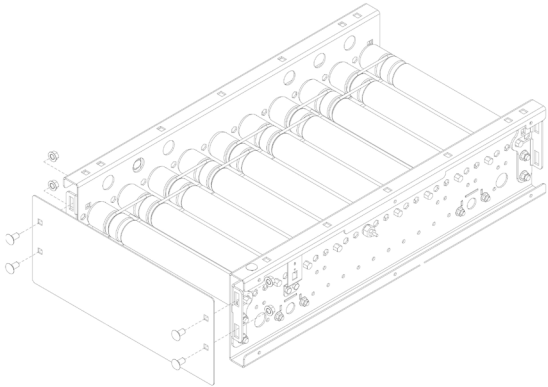
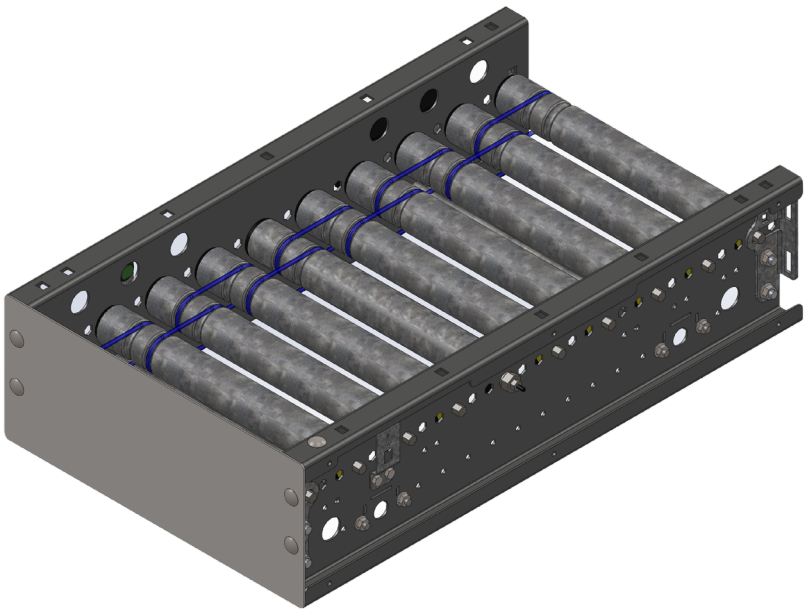
SERIES 1500, STANDARD BLADE STOP ASSEMBLY	
QUICK QUOTE#	Description
A011501	15IN BF BLADE STOP ASSEMBLY
A012101	21IN BF BLADE STOP ASSEMBLY
A012401	24IN BF BLADE STOP ASSEMBLY
A012701	27IN BF BLADE STOP ASSEMBLY

# STANDARD END PLATE

## ACCESSORY MODULE - Series 1500



Standard end plates provide safety and a clean finish for the end of conveyor lines.



### KEY FEATURES AND BENEFITS

- End cover plates are made of industrial strength welded and bolted steel
- Modular bolt together design
- Resilient and durable construction
- Hardware Included

### SERIES 1500, STANDARD END PLATE

QUICK QUOTE#	Description
A021501	END PLATE, 15IN BF, 14GA, RSL
A022101	END PLATE, 21IN BF, 14GA, RSL
A022401	END PLATE, 24IN BF, 14GA, RSL
A022701	END PLATE, 27IN BF, 14GA, RSL
A021502	END PLATE, 15IN BF, 14 GA, RSH, 5.25IN
A022102	END PLATE, 21IN BF, 14 GA, RSH, 5.25IN
A022402	END PLATE, 24IN BF, 14 GA, RSH, 5.25IN
A022702	END PLATE, 27IN BF, 14 GA, RSH, 5.25IN

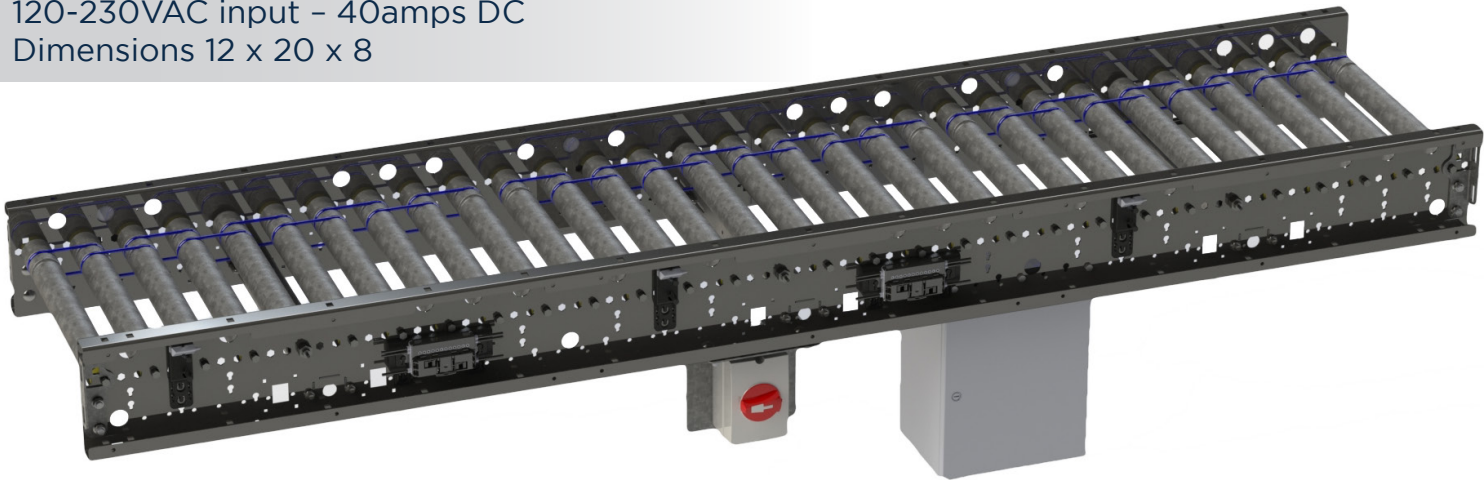
# 40 AMP POWER MODULE

## ACCESSORY MODULE - Series 1500



120VAC input – 40amps DC output conveyor power module is a compact low voltage distribution solution. This product features three 15amp quick connect low voltage circuits and one 120–230VAC quick connection. This solution also includes an upstream means to disconnect your high voltage for fast, safe, and easy service or replacement. Includes all cables and mounting hardware needed for installation.

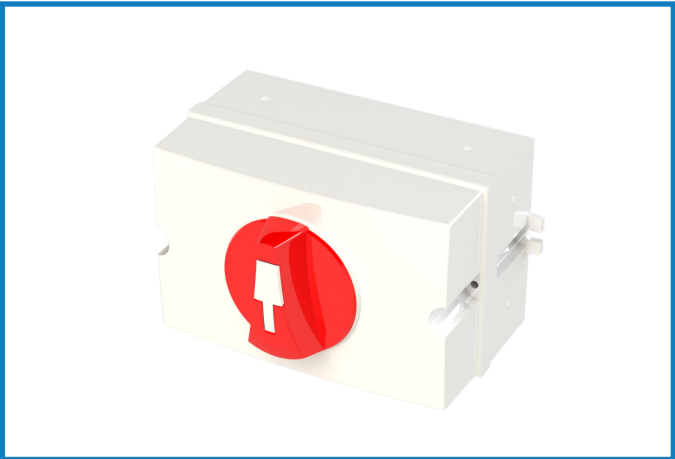
120-230VAC input – 40amps DC  
Dimensions 12 x 20 x 8



\*Straight Module Not Included\*

### KEY FEATURES AND BENEFITS

- 120-230VAC input-40amps DC output
- Three 15amp quick connect low voltage circuits and one 120-230V quick connection
- Compact low voltage distribution solution
- Upstream Disconnect Allows for Safe Service and Replacement
- Ideal Conveyor Mounting Placement
- Scratch Resistant Finish
- IP67 Rated



### SERIES 1500, H-20 40AMP POWER SUPPLY ENCLOSURE AND MOUNTING KITS (120V 3 PHASE)

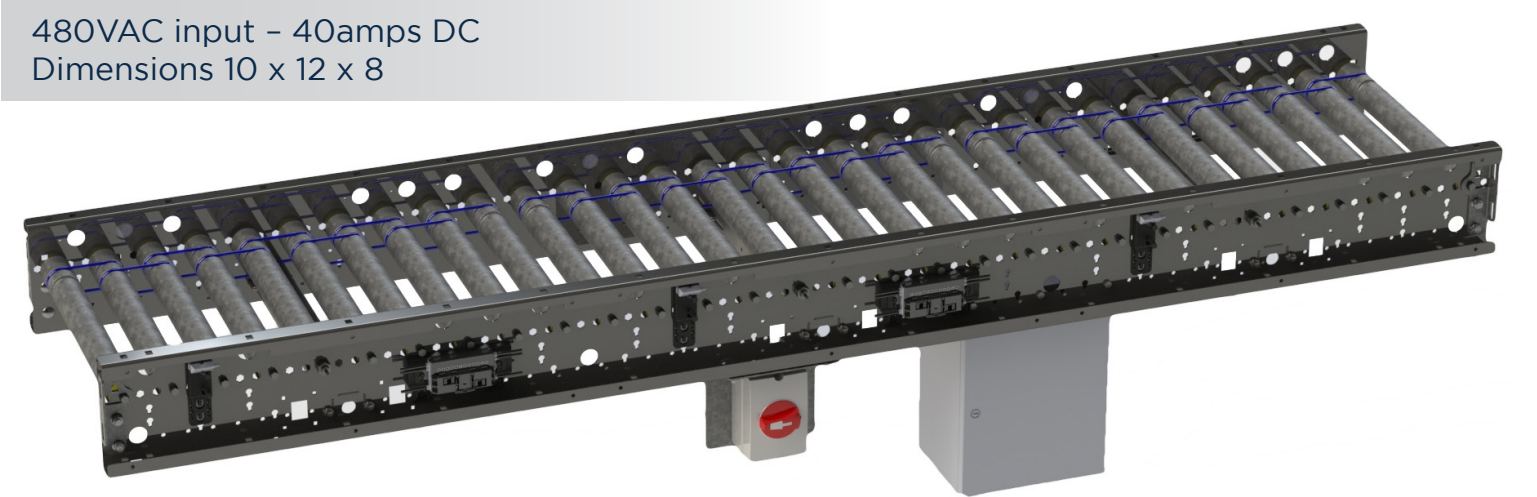
QUICK QUOTE#	Description
A5XX03	480VAC - 40A ASI POWER SUPPLY ENCLOSURE WITH QUICK DISCONNECTS AND MOUNTING BRACKET

# 40 AMP POWER MODULE

## ACCESSORY MODULE - Series 1500



480VAC input – 40amps DC output conveyor power module is a compact low voltage distribution solution. This product features three 15amp quick connect low voltage circuits and one 480V quick connection. This solution also includes an upstream means to disconnect your high voltage for fast, safe, and easy service or replacement. Includes all cables and mounting hardware needed for installation.

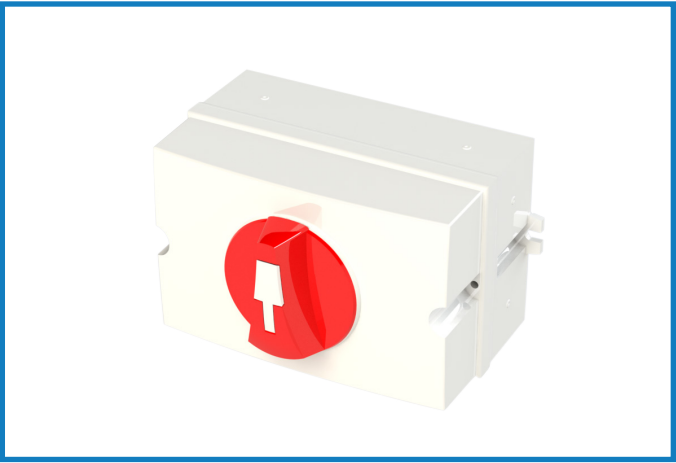


Power Supply Mounting

\*Straight Modules & Leg Supports Not Included\*

**KEY FEATURES AND BENEFITS**

- 480VAC input-40amps DC output
- Three 15amp quick connect low voltage circuits and one 120-230V quick connection
- Compact low voltage distribution solution
- Upstream Disconnect Allows for Safe Service and Replacement
- Ideal Conveyor Mounting Placement
- Scratch Resistant Finish
- IP67 Rated



### SERIES 1500, H-20 40AMP POWER SUPPLY ENCLOSURE AND MOUNTING KITS (480V 3 PHASE)

QUICK QUOTE#	Description
A50XX01	480VAC - 40A ASI POWER SUPPLY ENCLOSURE WITH QUICK DISCONNECTS AND MOUNTING BRACKET

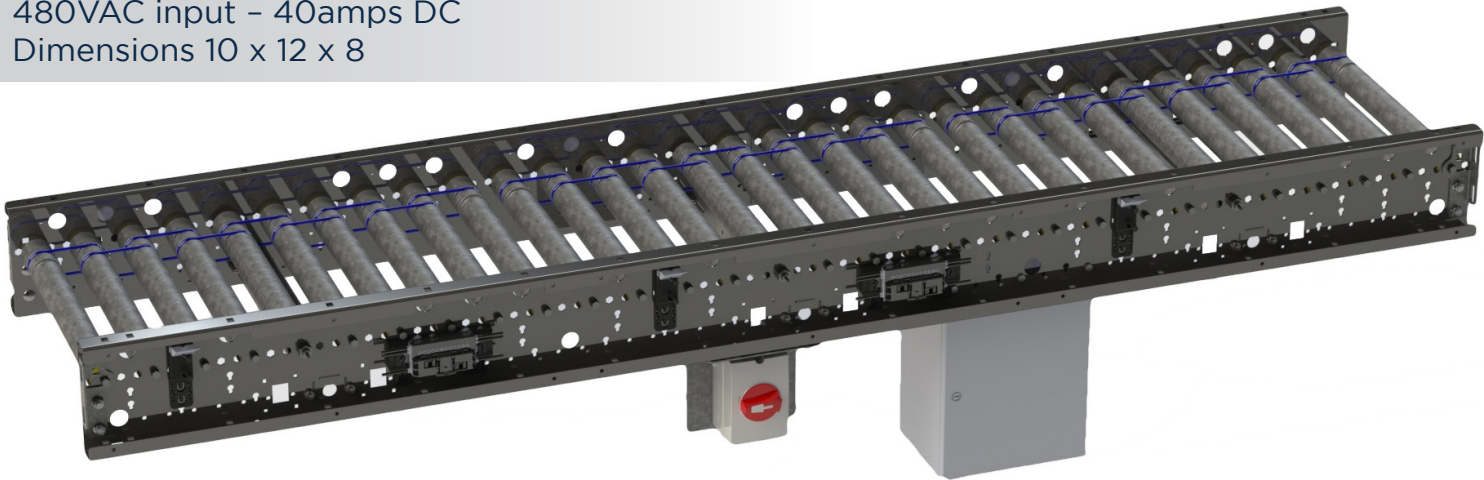
# 80 AMP POWER MODULE

## ACCESSORY MODULE - Series 1500



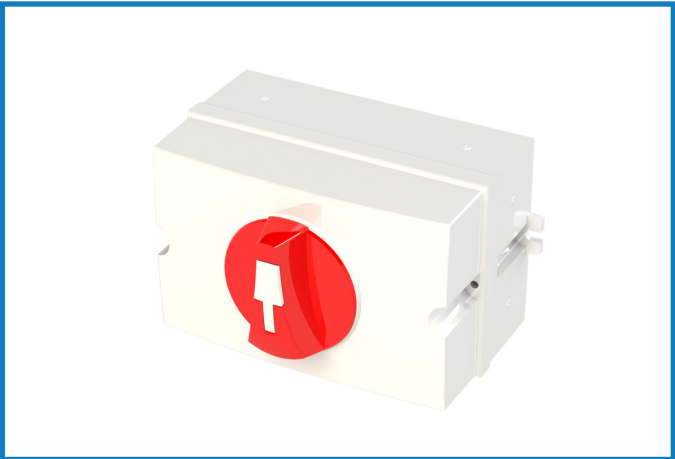
480VAC input – 80amps DC output conveyor power module is a compact low voltage distribution solution. This product features six 15amp quick connect low voltage circuits and one 480V quick connection. This solution also includes an upstream means to disconnect your high voltage for fast, safe, and easy service or replacement. Includes all cables and mounting hardware needed for installation.

480VAC input – 40amps DC  
Dimensions 10 x 12 x 8



### KEY FEATURES AND BENEFITS

- 480VAC input-80amps DC output
- Six 15amp quick connect low voltage circuits and one 120-230V quick connection
- Compact low voltage distribution solution
- Upstream Disconnect Allows for Safe Service and Replacement
- Ideal Conveyor Mounting Placement
- Scratch Resistant Finish
- IP67 Rated



### SERIES 1500, H-20 80AMP POWER SUPPLY ENCLOSURE AND MOUNTING KITS (480V 3 PHASE)

QUICK QUOTE#	Description
A50XX02	480VAC - 80A ASI POWER SUPPLY ENCLOSURE WITH QUICK DISCONNECTS AND MOUNTING BRACKET