

POWERED BY

TREW[®]

CATALOG

MOTORIZED DRIVER ROLLER CONVEYOR MODULES

Series 1500 - EC5000



1.800.571.8739

poweredbyTREW.com

info@trewautomation.com

TABLE OF CONTENTS

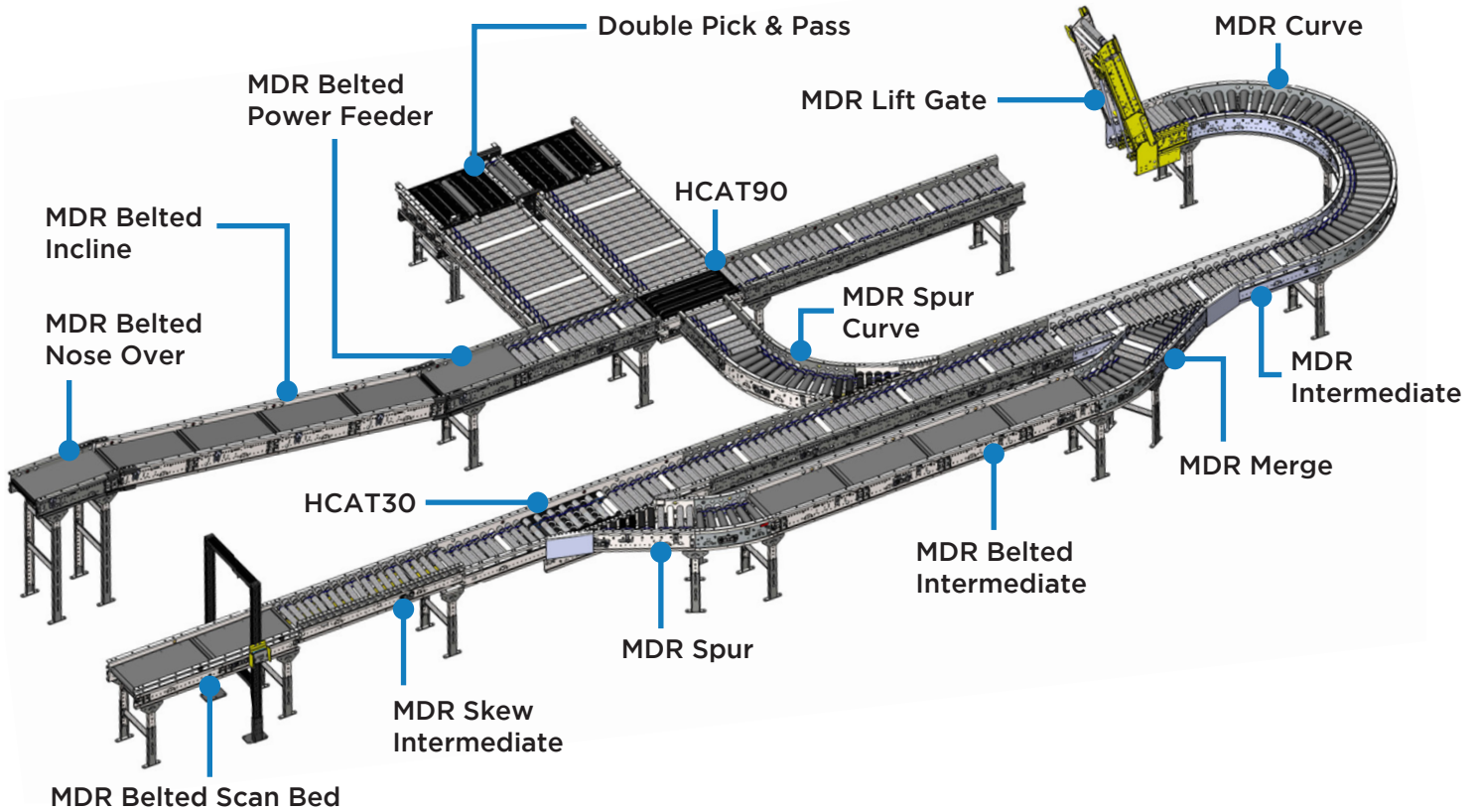
CONVEYOR MODULES

EC5000

POWERED BY

TREW[®]

System Overview	2
MDR Intermediate (RSL/RSH)	5
MDR Skew Intermediate	7
MDR Curve (RSL/RSH)	9
MDR Merge	11
HCAT90 Transfer	13
MDR Lift Gate	15
MDR Spur Curve	17
MDR Spur (RSL/RSH)	19
HCAT30 Divert	21
Double/Triple Pick & Pass	23
MDR Belted Intermediate	25
MDR Belted Incline	27
MDR Belted Nose Over / Power Feeder	29
MDR Belted Scan Bed	31
Engineered To Order Modules	
MDR Spiral	34
MDR Spiral Curve	35
MDR Double Helix Spiral	36
MDR TREWflow Decline	37



Series 1500 conveyor modules are high-performing, versatile, and reliable. They are ideal for various material handling applications, including e-commerce, parcel delivery, and distribution centers, with their robust construction, quiet operation, and ease of installation and maintenance.

- Less Power – uses 30-50% less energy
- Quiet – run on demand with low noise
- Modular –flexible solutions and layouts

SYSTEM OVERVIEW

PLATFORM SPECIFICATIONS

SERIES 1500 CONVEYOR - PLATFORM SPECIFICATIONS

Zones Sizes	MDR: 24", 30", 36" NBA: 36"
MTBH	8"x8"x0.75" minimum package size on 3" roller centers, 6"x6"x0.75" minimum package size on 2" roller centers, 75lbs. max weight
Intermediate Lengths (by Zone Lengths)	24" Zones = 24", 48", 96", 144" 30" Zones = 30", 60", 120" 36" Zones = 36", 72", 144" Belt = 36", 72", 108", 144"
Frames	12 Gauge, Bolted Construction Frame Height = Roller Set High (5.25") or Low (7.5"), Scan Bed (5.5") Top of Roller = 6.5" to 172.5", or ceiling hung Roller Centers = 2" or 3"
Between Frames (BF)	MDR/Belt/NBA/LR = 15", 21", 27", 33", 36" ECC = 21", 27", 33", 36", 39", 45"
Temperature	40° - 104°F
Commercialized Colors	Trew Silver - RAL 9022 Light (Amazon) Grey - RAL7035

Modules	Maximum Speed	Maximum Weight	Minimum Product Size (2"CC)	Minimum Product Size (3"CC)	Min Product Height - RSL/RSB
Intermediate	180FPM	75lbs	6"x6"	8"x8"	0.75" / 0"
Roller Curves	180FPM	75lbs	6"x6"	8"x8"	0.75" / 0"
Spiral Curve	180FPM	75lbs	6"x6"	8"x8"	0.75" / 0"
Spur	180FPM	75lbs	6"x6"	8"x8"	0.75" / 0"
Merge	180FPM	75lbs	6"x6"	8"x8"	0.75" / 0"
Skew Intermediate	180FPM	75lbs	6"x6"	8"x8"	0.75" / 0"
Lift Gate	180FPM	75lbs	6"x6"	8"x8"	0.75" / 0"
HCA30	180FPM	75lbs	8"x8"	8"x8"	0.75" / 0"
HCA90	180FPM	75lbs	<i>Not Available</i>	9"x9" (4" CC)	0.75" / 0"
Double Pick & Pass	180FPM	75lbs	<i>Not Available</i>	9"x9" (4" CC)	0.75" / 0"
Triple Pick & Pass	180FPM	75lbs	<i>Not Available</i>	9"x9" (4" CC)	0.75" / 0"
Spur Curve	150FPM	75lbs	<i>Not Available</i>	8"x8"	0.75" / 0"
Belted Intermediate	130FPM	50lbs	<i>Not Available</i>	4"x4" (FWB)	0.5" / N/A
Belted Curve	150FPM	50lbs	<i>Not Available</i>	4"x4" (FWB)	0.5" / N/A
Belted Incline	150FPM	50lbs	<i>Not Available</i>	4"x4" (FWB)	0.5" / N/A
Belted Decline	180FPM	75lbs	<i>Not Available</i>	4"x4" (FWB)	0.5" / N/A
Spiral Module	150FPM	75lbs	<i>Not Available</i>	8"x8"	0.75" / 0"
Scan Bed	150FPM	50lbs	<i>Not Available</i>	4"x4" (FWB)	0.75" / 0"

SYSTEM OVERVIEW

GENERAL DEFINITIONS

<i>Abbreviation</i>	<i>Translation</i>
BF	Between Frame
CC	Roller Center
CPM	Cartons Per Minute
°F	Degrees Farenheit
FPM	Feet Per Minute
FWB	Full Width Belt
G20	Full Control Card
H20	ZPA Control Card
I/O	Input/Output
IP54	Ingress Protection: 5 = Limited protection against dust, 4 = Protected against water splash
IP67	Ingress Protection: 6 = Totally protected against dust, 7 = Protected from immersion of up to 1 meter of water
IR	Inside Radius
lbs	Pounds
LH	Left Hand
MDR	Motorized Drive Roller
MTBH	Material To Be Handled
OAL	Overall Length
PLC	Programmable Logical Controller
RH	Right Hand
RSH	Roller Set High
RSL	Roller Set Low
VAC	Volts Alternating Current
VDC	Volts Direct Current
ZPA	Zero Pressure Accumulation

MDR INTERMEDIATE RSL/RSH

Series 1500 Conveyor Module

Controls Platform: G20 Full Control & H20 Auto Control

POWERED BY

TREW®

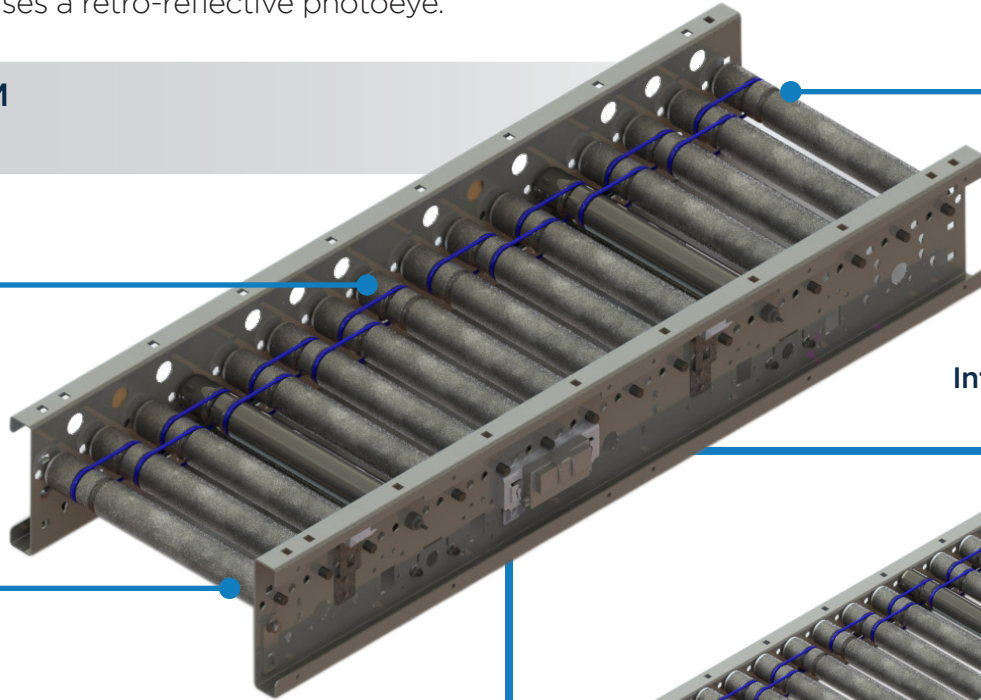
The MDR Straight Intermediate modules can convey products in a linear direction. Its bed of rollers can either be spaced 2 or 3 inches apart. These models come in Roller Set Low and Roller Set High. Roller Set High (RSH) configuration positions its bed of rollers up high on the side rails in case products need to be pulled laterally off the conveyor. This configuration uses a diffused Photoeye sensor to detect product. Roller Set Low (RSL) configuration positions its bed of rollers in the middle of its side rails. This configuration uses a retro-reflective photoeye.

- Up to 180FPM
- O-Band

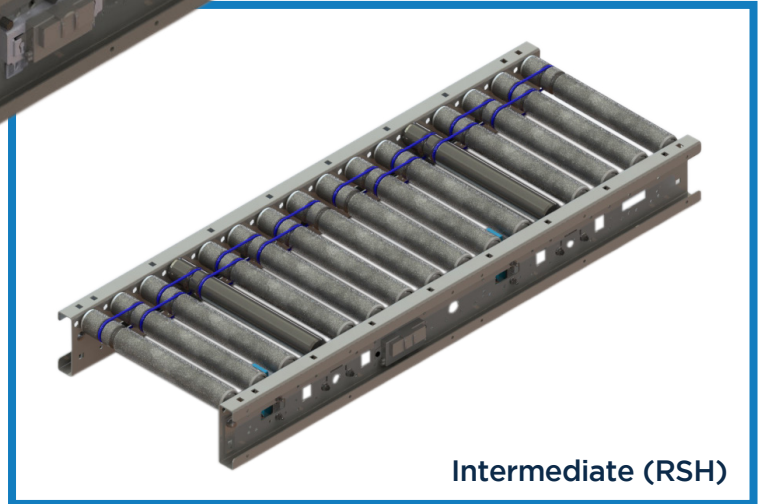
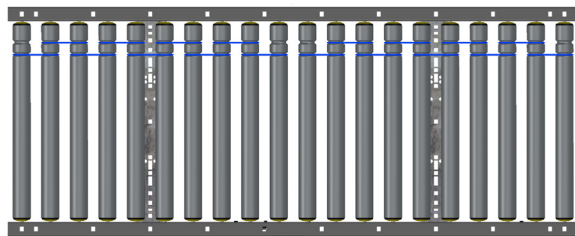
Poly-coated rollers are available in 3" roller centers

Maximum product weight 75lbs

2" and 3" roller center configurations available



Intermediate (RSL)



Intermediate (RSH)

KEY FEATURES AND BENEFITS

- Light to medium weight applications up to 75lbs.
- Resilient and durable construction. Perfect for distribution, warehouse, process lines and postal applications.
- Tool-less mounting brackets for control card components.
- Electrical components have quick connect terminals for easy installations and expansion.
- Operates in 40° - 104°F.
- Minimum product size 8" x 8" x 0.75" for 3" roller center, 6" x 6" for 2" roller center.
- 2" & 3" roller centers standard.
- 3" Roller center may be ordered as poly-coated.
- Using durable, high tension 3/16" diameter O-bands.
- Available ZPA Analyzer allows for system diagnostic and commissioning.
- Standard IP54.

MDR INTERMEDIATE RSL/RSH

Series 1500 Conveyor Module



SERIES 1500 CONVEYOR - MDR STRAIGHT INTERMEDIATE, RSL, 24" ZONE							
Part #	Width (BF)	Side Channel	Roller Center	MDR Type	Hand	Control	Color
TR15001 (24" Long) TR15002 (48" Long) TR15003 (96" Long) TR15004 (144" Long)	15, 21, 27, 33, 36	RSL	3"	EC5000	LH RH	AUTO FULL	F9022 F7035
TR15163 (24" Long) TR15164 (48" Long) TR15165 (96" Long) TR15166 (144" Long)	15, 21, 27, 33, 36	RSL	2"	EC5000	LH RH	AUTO FULL	F9022 F7035

SERIES 1500 CONVEYOR - MDR STRAIGHT INTERMEDIATE, RSH, 24" ZONE							
Part #	Width (BF)	Side Channel	Roller Center	MDR Type	Hand	Control	Color
TR15011 (24" Long) TR15012 (48" Long) TR15013 (96" Long) TR15014 (144" Long)	15, 21, 27, 33, 36	RSH	3"	EC5000	LH RH	AUTO FULL	F9022 F7035
TR15198 (24" Long) TR15199 (48" Long) TR15200 (96" Long) TR15201 (144" Long)	15, 21, 27, 33, 36	RSH	2"	EC5000	LH RH	AUTO FULL	F9022 F7035

SERIES 1500 CONVEYOR - MDR STRAIGHT INTERMEDIATE, RSL, 30" ZONE							
Part #	Width (BF)	Side Channel	Roller Center	MDR Type	Hand	Control	Color
TR15005 (30" Long) TR15006 (60" Long) TR15007 (120" Long)	15, 21, 27, 33, 36	RSL	3"	EC5000	LH RH	AUTO FULL	F9022 F7035
TR15167 (30" Long) TR15168 (60" Long) TR15169 (120" Long)	15, 21, 27, 33, 36	RSL	2"	EC5000	LH RH	AUTO FULL	F9022 F7035

SERIES 1500 CONVEYOR - MDR STRAIGHT INTERMEDIATE, RSH, 30" ZONE							
Part #	Width (BF)	Side Channel	Roller Center	MDR Type	Hand	Control	Color
TR15015 (30" Long) TR15016 (60" Long) TR15017 (120" Long)	15, 21, 27, 33, 36	RSH	3"	EC5000	LH RH	AUTO FULL	F9022 F7035
TR15202 (30" Long) TR15203 (60" Long) TR15204 (120" Long)	15, 21, 27, 33, 36	RSH	2"	EC5000	LH RH	AUTO FULL	F9022 F7035

SERIES 1500 CONVEYOR - MDR STRAIGHT INTERMEDIATE, RSL, 36" ZONE							
Part #	Width (BF)	Side Channel	Roller Center	MDR Type	Hand	Control	Color
TR15008 (36" Long) TR15009 (72" Long) TR15010 (144" Long)	15, 21, 27, 33, 36	RSL	3"	EC5000	LH RH	AUTO FULL	F9022 F7035
TR15170 (36" Long) TR15171 (72" Long) TR15172 (144" Long)	15, 21, 27, 33, 36	RSL	2"	EC5000	LH RH	AUTO FULL	F9022 F7035

SERIES 1500 CONVEYOR - MDR STRAIGHT INTERMEDIATE, RSH, 36" ZONE							
Part #	Width (BF)	Side Channel	Roller Center	MDR Type	Hand	Control	Color
TR15018 (36" Long) TR15019 (72" Long) TR15020 (144" Long)	15, 21, 27, 33, 36	RSH	3"	EC5000	LH RH	AUTO FULL	F9022 F7035
TR15205 (36" Long) TR15206 (72" Long) TR15207 (144" Long)	15, 21, 27, 33, 36	RSH	2"	EC5000	LH RH	AUTO FULL	F9022 F7035

Engineer to order options include: IP67, other MDRs & gear ratios, custom rail colors, poly-V belt, alternative photoeye locations, additional BFs, additional zone lengths, additional zone quantities. Additional options may be available upon request. Contact Trew Engineering for further information.

MDR SKEW INTERMEDIATE

Series 1500 Conveyor Module

Controls Platform: G20 Full Control & H20 Auto Control

POWERED BY

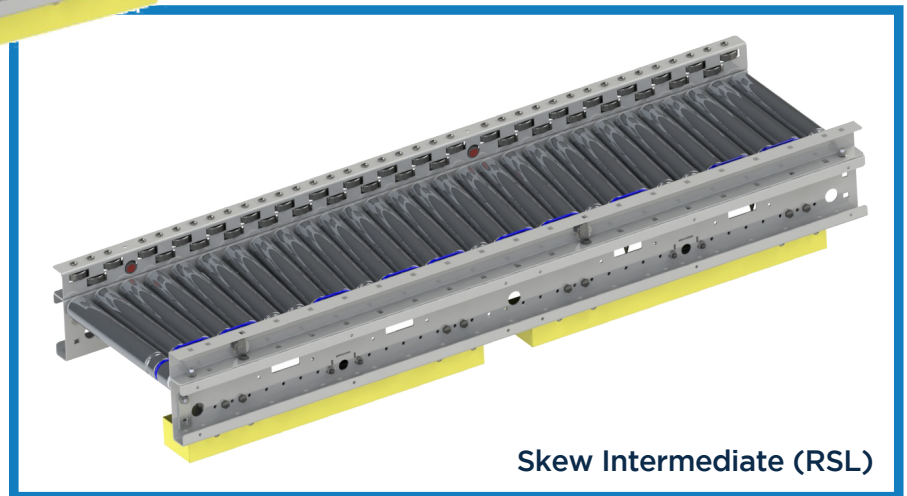
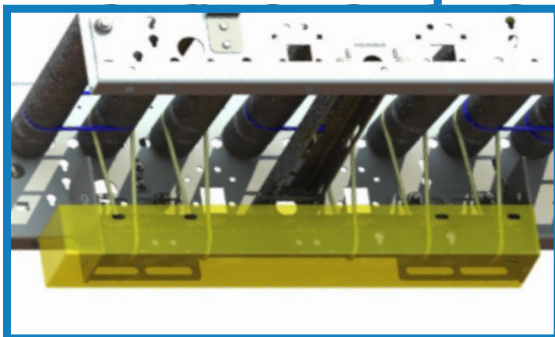
TREW®

The MDR Skew Intermediate Module is used to move products from the centerline of the conveyor to one side or the other. This lateral repositioning of products along the length of the conveyor is accomplished by skewing the bed of rollers such that the vectored component of lateral forces will drive the product into the rail. Moving products to one side, at times, may be desirable when some downstream operation requires the box to be in a specific location. This module is available in 2- and 3-inch centers and Rollers Set High (RSH) and Rollers Set Low (RSL) configurations.

- Up to 180FPM
- O-Band

1.5" of skew per foot standard

Skew Intermediate (RSH)



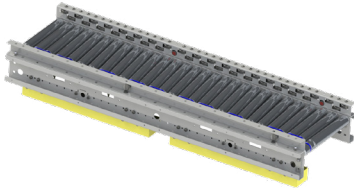
Skew Intermediate (RSL)

KEY FEATURES AND BENEFITS

- Light to medium weight applications up to 75lbs.
- Resilient and durable construction. Perfect for distribution, warehouse, process lines and postal applications.
- Tool-less mounting brackets for control card components.
- 3" Roller center may be ordered as poly-coated.
- Operates in 40° - 104°F.
- Minimum product size 8" x 8" x 0.75" for 3" roller center, 6" x 6" for 2" roller center.
- Electrical components have quick connect terminals for easy installations and expansion.
- Using durable, high tension 3/16" O-bands.
- Available ZPA Analyzer allows for system diagnostic and commissioning.
- Standard IP54.

MDR SKEW INTERMEDIATE

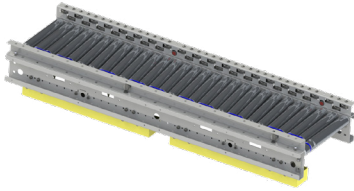
Series 1500 Conveyor Module



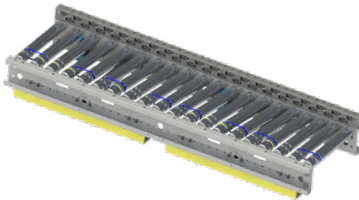
SERIES 1500 CONVEYOR - MDR SKEW INTERMEDIATE, RSL, 24" ZONE								
Part #	Width (BF)	Skew	Side Channel	Roller Center	MDR Type	Hand	Control	Color
TR15029 (48" Long) TR15030 (96" Long)	15, 21, 27, 33, 36	LH RH	RSL	3"	EC5000	LH RH	AUTO FULL	F9022 F7035
TR15035 (48" Long) TR15036 (96" Long)	15, 21, 27, 33, 36	LH RH	RSL	2"	EC5000	LH RH	AUTO FULL	F9022 F7035



SERIES 1500 CONVEYOR - MDR SKEW INTERMEDIATE, RSH, 24" ZONE								
Part #	Width (BF)	Skew	Side Channel	Roller Center	MDR Type	Hand	Control	Color
TR15218 (48" Long) TR15219 (96" Long)	15, 21, 27, 33, 36	LH RH	RSH	3"	EC5000	LH RH	AUTO FULL	F9022 F7035
TR15224 (48" Long) TR15225 (96" Long)	15, 21, 27, 33, 36	LH RH	RSH	2"	EC5000	LH RH	AUTO FULL	F9022 F7035



SERIES 1500 CONVEYOR - MDR SKEW INTERMEDIATE, RSL, 30" ZONE								
Part #	Width (BF)	Skew	Side Channel	Roller Center	MDR Type	Hand	Control	Color
TR15031 (60" Long) TR15032 (120" Long)	15, 21, 27, 33, 36	LH RH	RSL	3"	EC5000	LH RH	AUTO FULL	F9022 F7035
TR15037 (60" Long) TR15038 (120" Long)	15, 21, 27, 33, 36	LH RH	RSL	2"	EC5000	LH RH	AUTO FULL	F9022 F7035



SERIES 1500 CONVEYOR - MDR SKEW INTERMEDIATE, RSH, 30" ZONE								
Part #	Width (BF)	Skew	Side Channel	Roller Center	MDR Type	Hand	Control	Color
TR15220 (60" Long) TR15221 (120" Long)	15, 21, 27, 33, 36	LH RH	RSH	3"	EC5000	LH RH	AUTO FULL	F9022 F7035
TR15226 (60" Long) TR15227 (120" Long)	15, 21, 27, 33, 36	LH RH	RSH	2"	EC5000	LH RH	AUTO FULL	F9022 F7035



SERIES 1500 CONVEYOR - MDR SKEW INTERMEDIATE, RSL, 36" ZONE								
Part #	Width (BF)	Skew	Side Channel	Roller Center	MDR Type	Hand	Control	Color
TR15033 (72" Long) TR15034 (144" Long)	15, 21, 27, 33, 36	LH RH	RSL	3"	EC5000	LH RH	AUTO FULL	F9022 F7035
TR15039 (72" Long) TR15040 (144" Long)	15, 21, 27, 33, 36	LH RH	RSL	2"	EC5000	LH RH	AUTO FULL	F9022 F7035



SERIES 1500 CONVEYOR - MDR SKEW INTERMEDIATE, RSH, 36" ZONE								
Part #	Width (BF)	Skew	Side Channel	Roller Center	MDR Type	Hand	Control	Color
TR15222 (72" Long) TR15223 (144" Long)	15, 21, 27, 33, 36	LH RH	RSH	3"	EC5000	LH RH	AUTO FULL	F9022 F7035
TR15228 (72" Long) TR15229 (144" Long)	15, 21, 27, 33, 36	LH RH	RSH	2"	EC5000	LH RH	AUTO FULL	F9022 F7035

Engineer to order options include: IP67, additional BFs, other MDRs & gear ratios, custom rail colors, poly-V belts. Additional options may be available upon request. Contact Trew Engineering for further information.

MDR CURVE RSL/RSH

Series 1500 Conveyor Module

Controls Platform: G20 Full Control & H20 Auto Control

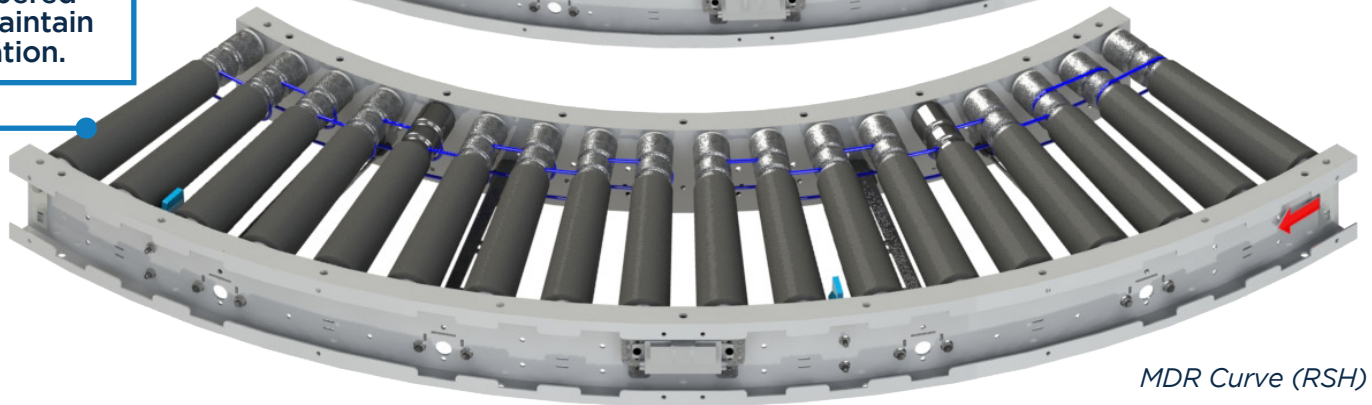
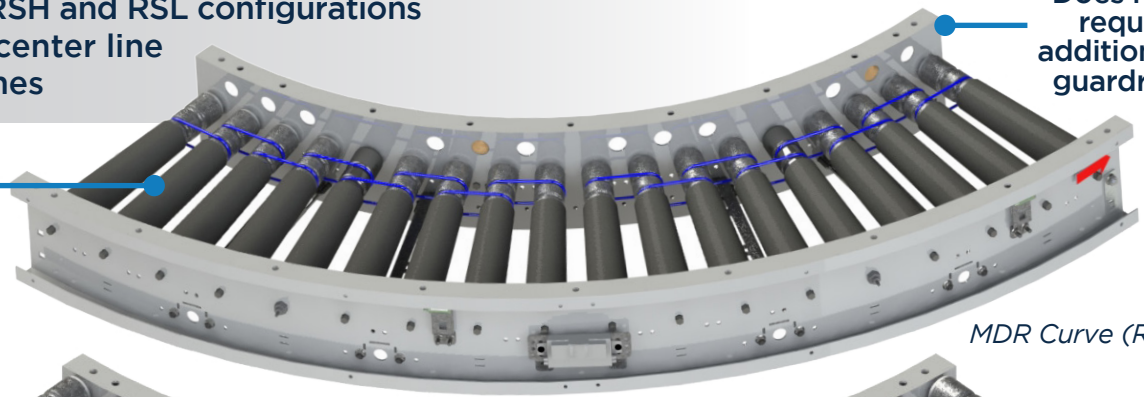
POWERED BY

TREW[®]

The MDR Curve module requires the use of true tapered rollers to maintain product orientation as it travels around the curve. Due to the increasing radius of the roller, the velocity of the roller is greater on the outside relative to the inside since the angular velocity does not change. The MDR Curve module is available in RSH and RSL, 2 and 3" center configurations and its corresponding photoeye type.

- Same features in RSH and RSL configurations
- Up to 180FPM at center line
- Accumulating zones

Does not require additional guardrail

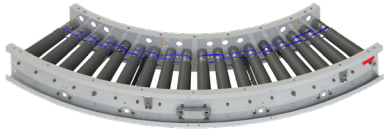


KEY FEATURES AND BENEFITS

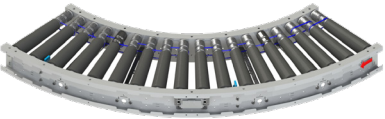
- When to use RSL:
 - Flexible and lower cost installation.
 - Improved handling and product sensing.
- When to use RSH:
 - When operators are pulling products off conveyor surface.
 - Can transport product wider than conveyor.
- True taper curves maintain product direction.
- Accumulation zones/curve:
 - 1 = 30°, 45°, 60° 2 = 90°
- Top of support, top of roller the same for RSH & RSL.
- Durable, high tension 3/16" diameter O-bands.
- Operates in 40° - 104°F.
- Minimum product heights:
 - RSL - 3/4" , RSH - N/A
- Zone sensor types:
 - RSL - Retroreflective photoeyes.
 - RSH - Thru-roller proximity sensors.
- Carrier roller position:
 - RSL - 2" below side frame
 - RSH - 1/4" above side frame
- Up to 75lbs per zone.
- Minimum product size 8" x 8" x 0.75" for 3" roller center, 6" x 6" for 2" roller center.
- Nominal 2" and 3" roller center measured at the inside.
- Factory mounted controls and photoeyes.

MDR CURVE RSL/RSH

Series 1500 Conveyor Module



SERIES 1500 CONVEYOR - MDR CURVE, RSL, 32.5" IR								
Part #	Width (BF)	Radius	Side Channel	Roller Center	MDR Type	Hand	Control	Color
TR15021 (90°) TR15022 (60°) TR15023 (45°) TR15024 (30°)	15, 21, 27, 33, 36	32.5"	RSL	3"	EC5000	LH RH	AUTO FULL	F9022 F7035
TR15155 (90°) TR15156 (60°) TR15157 (45°) TR15158 (30°)	15, 21, 27, 33, 36	32.5"	RSL	2"	EC5000	LH RH	AUTO FULL	F9022 F7035



SERIES 1500 CONVEYOR - MDR CURVE, RSH, 32.5" IR								
Part #	Width (BF)	Radius	Side Channel	Roller Center	MDR Type	Hand	Control	Color
TR15025 (90°) TR15026 (60°) TR15027 (45°) TR15028 (30°)	15, 21, 27, 33, 36	32.5"	RSH	3"	EC5000	LH RH	AUTO FULL	F9022 F7035
TR15159 (90°) TR15160 (60°) TR15161 (45°) TR15162 (30°)	15, 21, 27, 33, 36	32.5"	RSH	2"	EC5000	LH RH	AUTO FULL	F9022 F7035

Engineer to order options include: IP67, additional BFs, gap rollers, tight IR (17"), other MDRs & gear ratios, custom rail colors. Additional options may be available upon request. Contact Trew Engineering for further information.

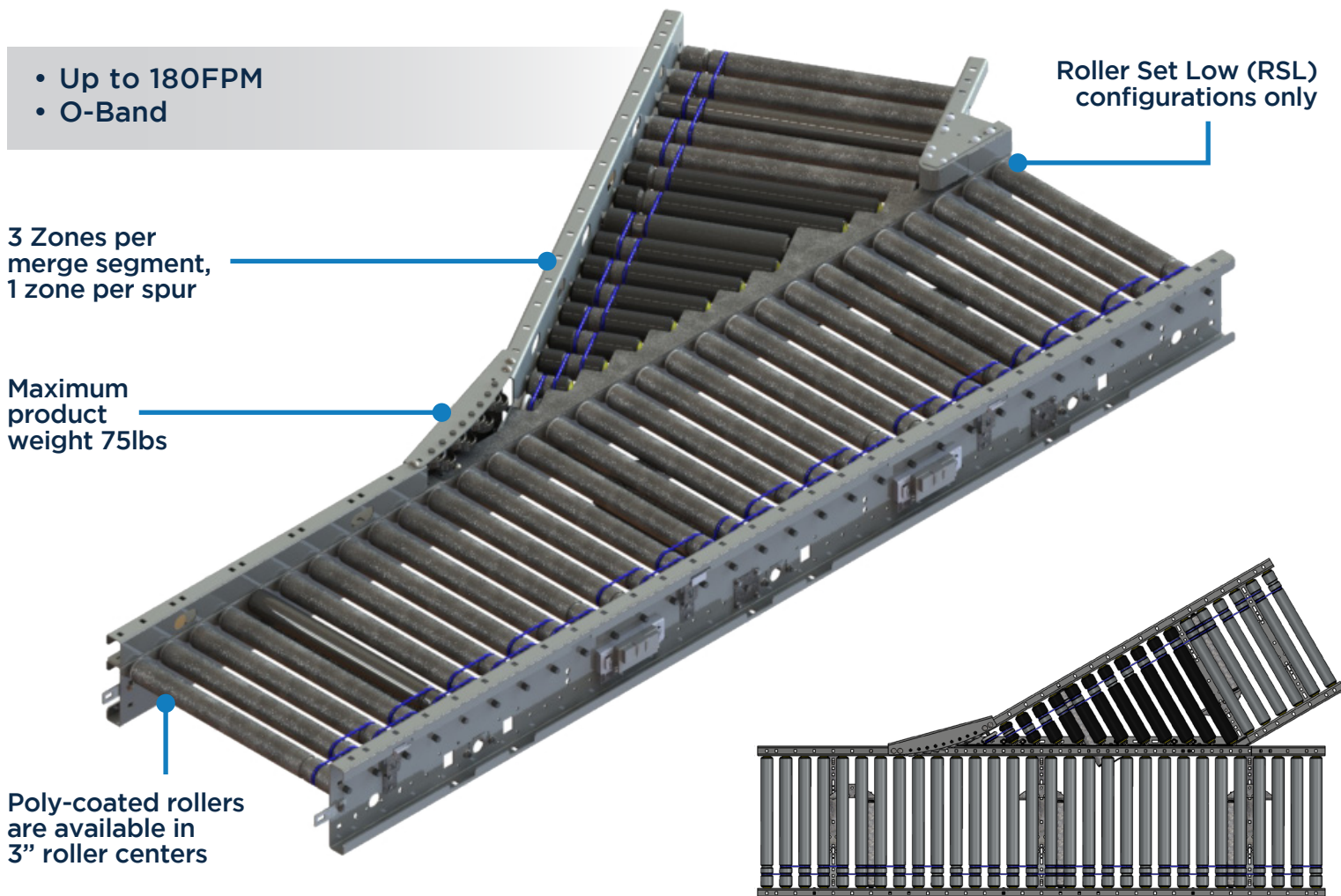
MDR MERGE

Series 1500 Conveyor Module

Controls Platform: G20 Full Control

POWERED BY
TREW[®]

The MDR Merge module is used to integrate two different conveyor lines into a single line. This merger can be accomplished by integrating a tapered, straight 30 degree “spur” into a straight intermediate bed and adjusting its zone control behavior. The MDR Merge is only available in RSL configuration, 2 and 3” roller centers, and it uses the retro-reflective photoeye sensor. This module can achieve a 40 products/min throughput rate.

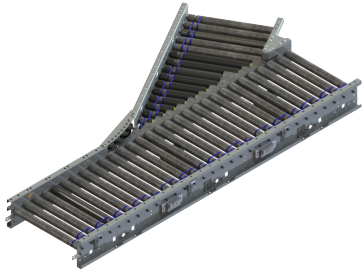


KEY FEATURES AND BENEFITS

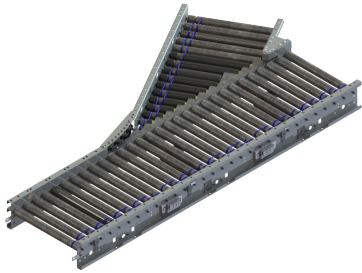
- Merge Rate up to 40 cases per minute.
- Light to medium weight applications up to 75lbs.
- Resilient and durable construction. Perfect for distribution, warehouse, process lines and postal applications.
- Using durable, high tension 3/16" diameter O-bands.
- Operates in 40° - 104°F.
- Minimum product size 8" x 8" x 0.75" for 3" roller center, 6" x 6" for 2" roller center.
- Tool-less mounting brackets for control card components.
- Electrical components have quick connect terminals for easy installations and expansion.
- IP54 Standard.

MDR MERGE

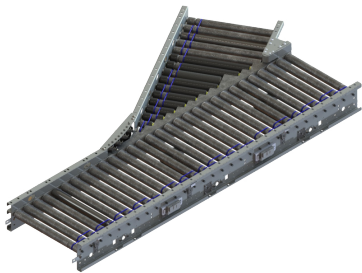
Series 1500 Conveyor Module



SERIES 1500 CONVEYOR - MDR MERGE, 24" ZONE							
Part #	Angle	Side Channel	Roller Center	MDR Type	Hand	Control	Color
TR15076 (15 BF, 72" Long) TR15077 (21 BF, 96" Long) TR15078 (27 BF, 96" Long) TR15079 (33 BF, 120" Long) TR15080 (36 BF, 120" Long)	30°	RSL	3"	EC5000	LH RH	FULL	F9022 F7035
TR15192 (15 BF, 72" Long) TR15193 (21 BF, 96" Long) TR15194 (27 BF, 96" Long) TR15195 (33 BF, 120" Long) TR15196 (36 BF, 120" Long)	30°	RSL	2"	EC5000	LH RH	FULL	F9022 F7035



SERIES 1500 CONVEYOR - MDR MERGE, 30" ZONE							
Part #	Angle	Side Channel	Roller Center	MDR Type	Hand	Control	Color
TR15072 (15 BF, 90" Long) TR15073 (21 BF, 90" Long) TR15074 (27 BF, 120" Long) TR15075 (33 BF, 120" Long) TR15081 (36 BF, 120" Long)	30°	RSL	3"	EC5000	LH RH	FULL	F9022 F7035
TR15188 (15 BF, 90" Long) TR15189 (21 BF, 90" Long) TR15190 (27 BF, 120" Long) TR15191 (33 BF, 120" Long) TR15197 (36 BF, 120" Long)	30°	RSL	2"	EC5000	LH RH	FULL	F9022 F7035



SERIES 1500 CONVEYOR - MDR MERGE, 36" ZONE							
Part #	Angle	Side Channel	Roller Center	MDR Type	Hand	Control	Color
TR15067 (15 BF, 108" Long) TR15068 (21 BF, 108" Long) TR15069 (27 BF, 108" Long) TR15070 (33 BF, 144" Long) TR15071 (36 BF, 144" Long)	30°	RSL	3"	EC5000	LH RH	FULL	F9022 F7035
TR15183 (15 BF, 108" Long) TR15184 (21 BF, 108" Long) TR15185 (27 BF, 108" Long) TR15186 (33 BF, 144" Long) TR15187 (36 BF, 144" Long)	30°	RSL	2"	EC5000	LH RH	FULL	F9022 F7035

Engineer to order options include: Flex control, additional BFs, additional zone lengths, other MDRs & gear ratios, custom rail colors. Additional options may be available upon request. Contact Trew Engineering for further information.

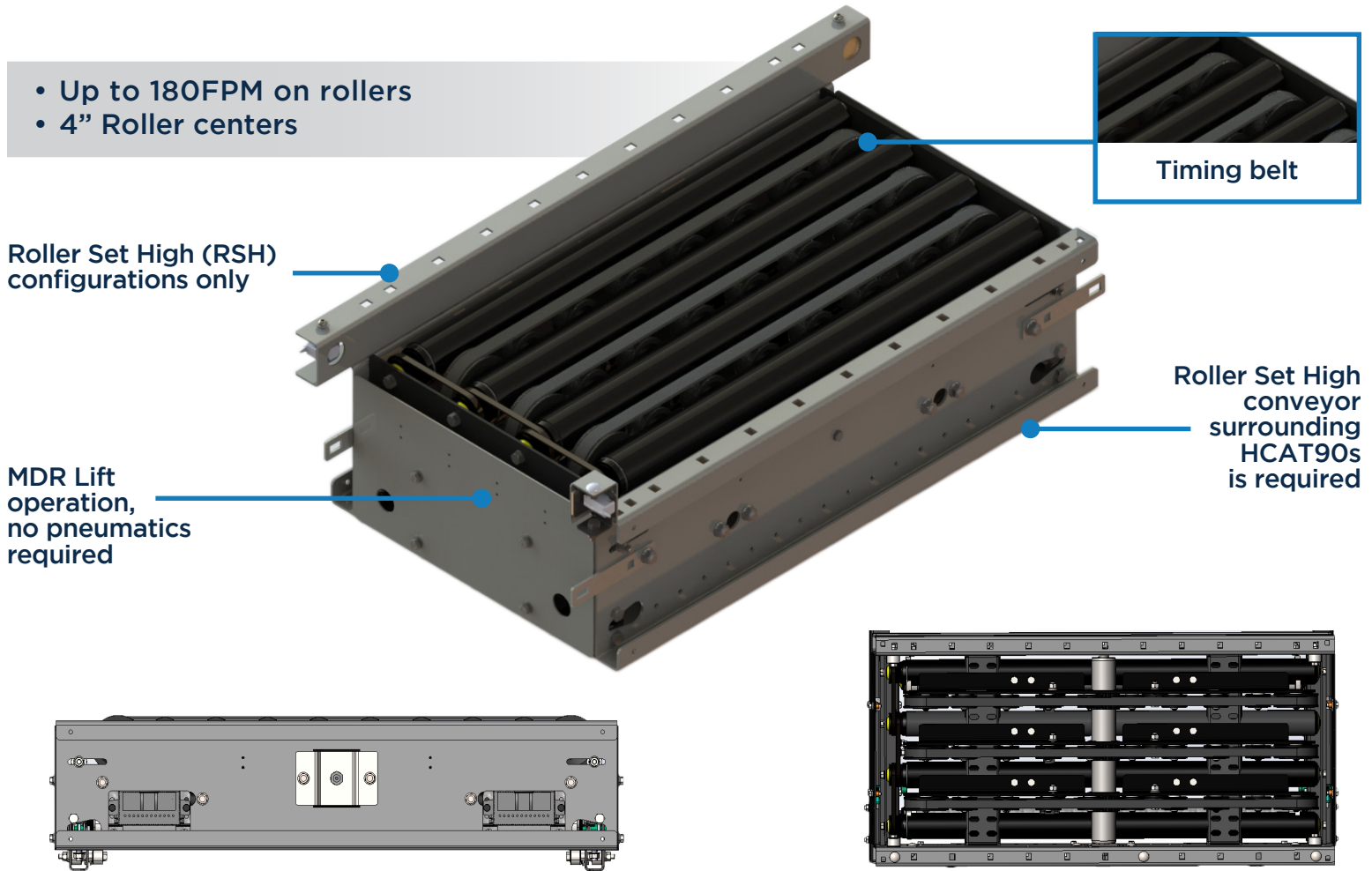
HCAT90

Series 1500 Conveyor Module

Controls Platform: G20 Full Control

POWERED BY
TREW[®]

The High-Speed Cam Actuated Transfer (HCAT90) divert modules provide a 90° right angle divert capability to divert product for user purposes. In general, the HCAT90 module is used when a small real estate footprint is required or for special user operations. This module can achieve a 30 products/min throughput rate.



- Up to 180FPM on rollers
- 4" Roller centers

Roller Set High (RSH) configurations only

MDR Lift operation, no pneumatics required

Timing belt

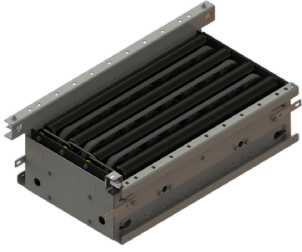
Roller Set High conveyor surrounding HCAT90s is required

KEY FEATURES AND BENEFITS

- Rate up to 25 products per min (Conditional on Application).
- Standard to medium weight applications up to 75lbs.
- Resilient and durable construction. Perfect for distribution, warehouse, process lines and postal applications.
- Tool-less mounting brackets for control card components.
- Using durable Timing Belts.
- Electrical components have quick connect terminals for easy installations and expansion.
- Minimum product size: 9" x 9" x 0.75" for 2" and 3" roller center.
- IP54 Standard.
- Positive Drive, Poly V-Band.
- Programming Required.
- Operates in 40° - 104°F.

HCAT90

Series 1500 Conveyor Module



SERIES 1500 CONVEYOR - HCAT90							
Part #	Width (BF)	Side Channel	Roller Center	MDR Type	Hand	Control	Color
TR15140 (24" Zone) TR15141 (30" Zone) TR15142 (36" Zone)	15, 21, 27, 33, 36	RSH	4"	EC5000	LH RH	FULL	F9022 F7035

Engineer to order options include: Additional BFs, additional zone lengths, other MDRs & gear ratios, alternative lift motors, custom rail color. Additional options may be available upon request. Contact Trew Engineering for further information.

MDR LIFT GATE

Series 1500 Conveyor Module

Controls Platform: G20 Full Control / H20 Auto Control

POWERED BY

TREW[®]

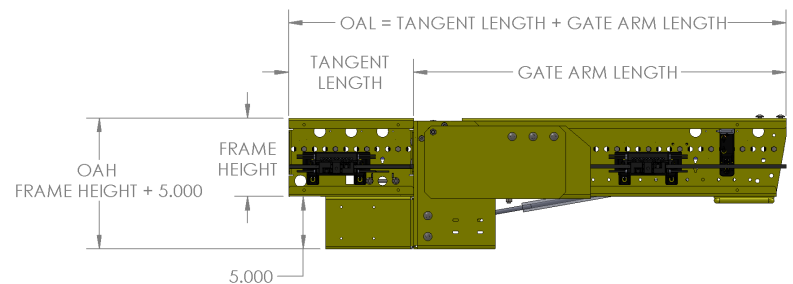
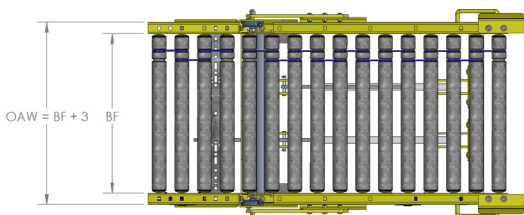
MDR Lift Gate modules provide pedestrian and pushcart access to the other side of the conveyor line. Typical gates consist of a 36" or 48" pivot bed with 12" tangents, adding a clear distance for a walkway. Other sizes and swing gates are available upon request. All lift gates come with gas springs to assist the user in moving the gate up or down. Pre-wired conveyor sections are networked with a variety of technologies and are easily configured for multiple applications.

- Up to 180FPM
- O-Band

Poly-coated rollers are available in 3" roller centers

Roller Set Low (RSL) configurations only

Gas springs assist the user in moving gate up or down

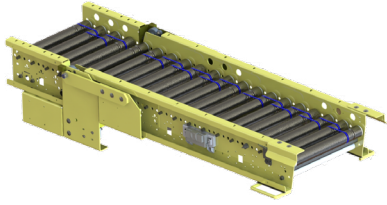


KEY FEATURES AND BENEFITS

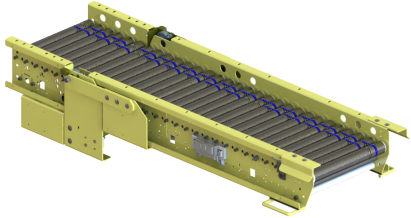
- Provides safe egress break in the conveyor line.
- Light to medium weight applications up to 75lbs.
- Resilient and durable construction. Perfect for distribution, warehouse, process lines and postal applications.
- Tool-less mounting brackets for control card components.
- May be ordered as poly-coated.
- Operates in 40° - 104°F.
- Minimum product size 8" x 8" x 0.75" for 3" roller center, 6" x 6" for 2" roller center.
- Using durable, high tension 3/16" diameter O-bands.
- Available ZPA Analyzer allows for system diagnostic and commissioning.
- Electrical components have quick connect terminals for easy installations and expansion.
- IP54 Standard.

MDR LIFT GATE

Series 1500 Conveyor Module



SERIES 1500 CONVEYOR - LIFT GATE - 3" ROLLER CENTER								
Part #	Width (BF)	Length	Side Channel	Roller Center	MDR Type	Hand	Control	Color
TR15132	15, 21, 27, 33, 36	48" (36" Gate)	RSL	3"	EC5000	LH RH	FULL AUTO	F1018
TR15133	15, 21, 27, 33, 36	60" (48" Gate)	RSL	3"	EC5000	LH RH	FULL AUTO	F1018



SERIES 1500 CONVEYOR - LIFT GATE - 2" ROLLER CENTER								
Part #	Width (BF)	Length	Side Channel	Roller Center	MDR Type	Hand	Control	Color
TR15134	15, 21, 27, 33, 36	48" (36" Gate)	RSL	2"	EC5000	LH RH	FULL AUTO	F1018
TR15135	15, 21, 27, 33, 36	60" (48" Gate)	RSL	2"	EC5000	LH RH	FULL AUTO	F1018

Engineer to order options include: Flex control, additional BFs, additional zone lengths, other MDRs & gear ratios, custom rail color, drawbridge style. Additional options may be available upon request. Contact Trew Engineering for further information.

MDR SPUR CURVE

Series 1500 Conveyor Module

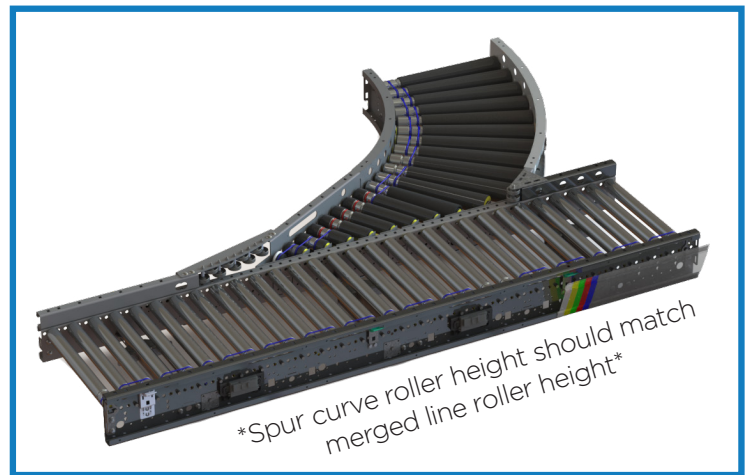
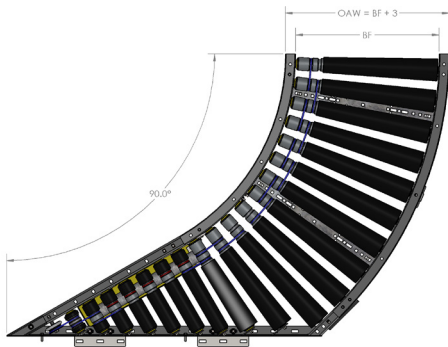
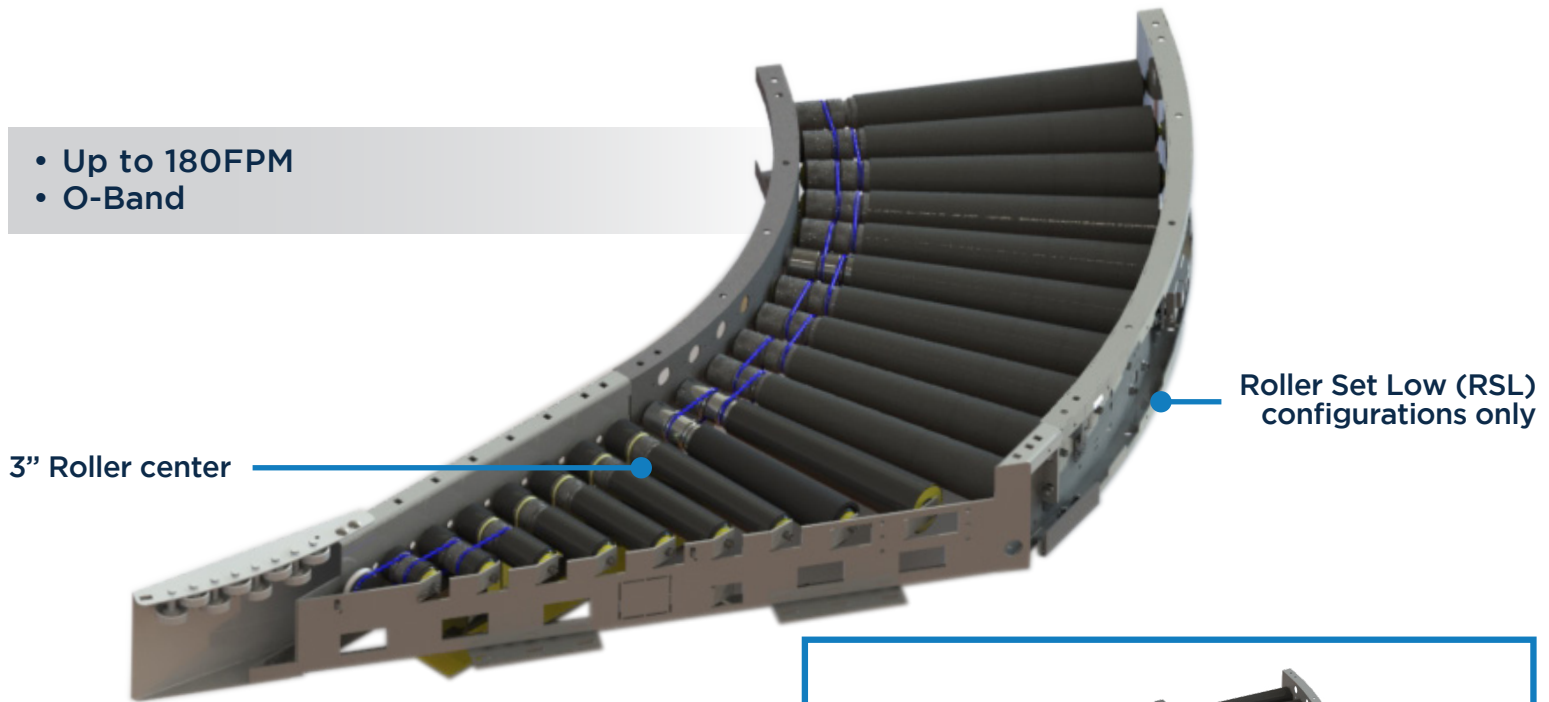
Controls Platform: G20 Full Control

POWERED BY

TREW®

The MDR Spur Curve module is an add-on module for product merge or divert needs. The MDR Spur Curve is used when there is no room for an HCAT30 or HCAT90. It is available in Rollers Set Low RSL, 3" Roller centers and uses a Retro-Reflective photoeye sensor.

- Up to 180FPM
- O-Band

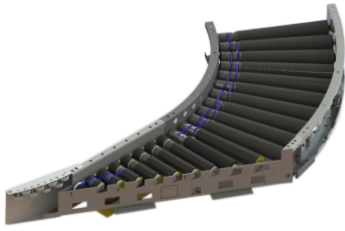


KEY FEATURES AND BENEFITS

- Merge any line that is perpendicular to the MDR Spur Curve.
- Light to medium weight applications up to 75lbs.
- Resilient and durable construction. Perfect for distribution, warehouse, process lines and postal applications.
- Operates in 40° - 104°F.
- Minimum product size 8" x 8" x 0.75".
- Tool-less mounting brackets for control card components.
- Electrical components have quick connect terminals for easy installations and expansion.
- Using durable, high tension 3/16" diameter O-bands.
- IP54 Standard.

MDR SPUR CURVE

MERGE MODULE - Series 1500



SERIES 1500 CONVEYOR - MDR SPUR CURVE, RSL								
Part #	Width (BF)	Merge	Side Channel	Roller Center	MDR Type	Hand	Control	Color
TR15128 (15 BF)	15, 21, 27, 33, 36	LH	RSL	3"	EC5000	LH	FULL	F9022
TR15130 (21 BF)		RH						F7035
TR15131 (27 BF)								

Engineer to order options include: Flex control, additional BFs, additional zone lengths, other MDRs & gear ratios, gap rollers, tight radius, custom rail color. Additional options may be available upon request. Contact Trew Engineering for further information.

MDR SPUR RSL/RSH

Series 1500 Conveyor Module

Controls Platform: G20 Full Control

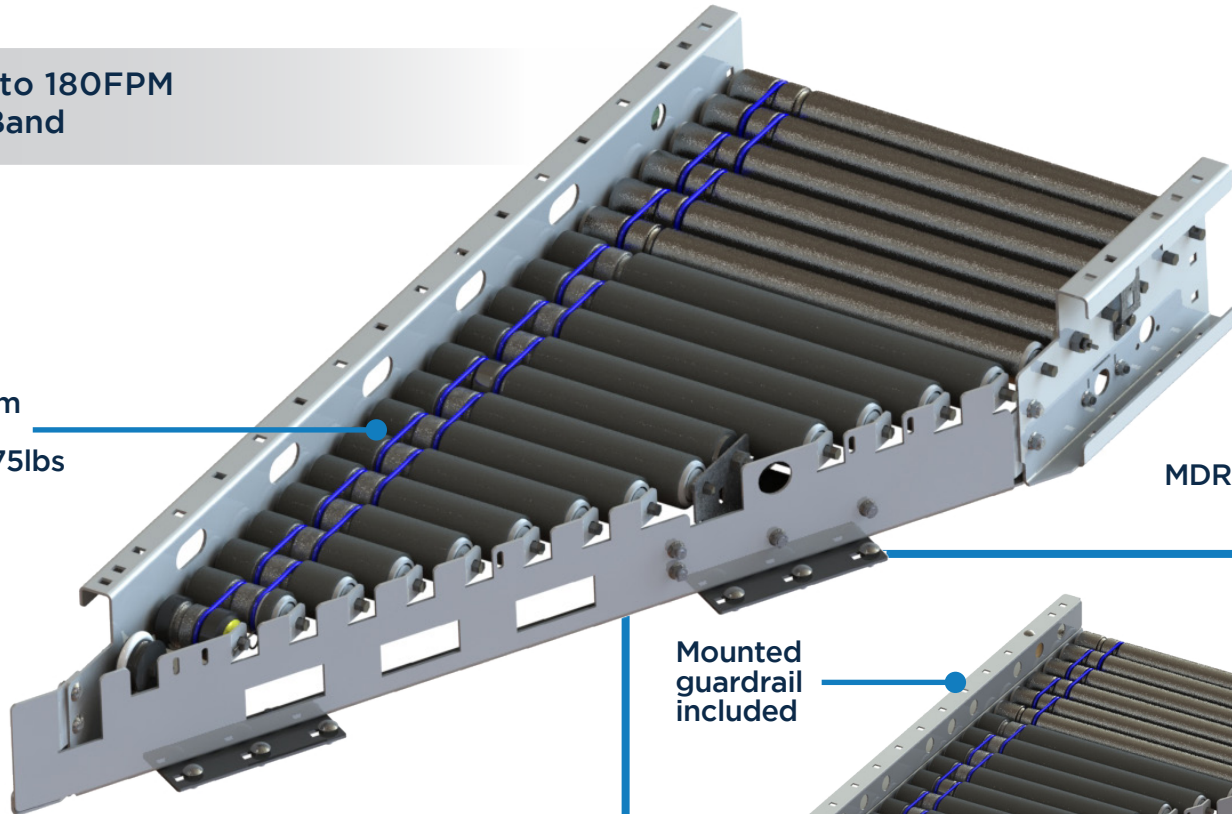
POWERED BY

TREW®

The MDR Spur module is an add-on module for product merge and divert needs. Spur Modules are fixed at 30° and can be placed nearly anywhere on a new or existing system. It is available in Rollers Set High (RSH) and Rollers Set Low (RSL), 2 & 3" roller centers and uses either a Retro-Reflective or Diffused photoeye sensor.

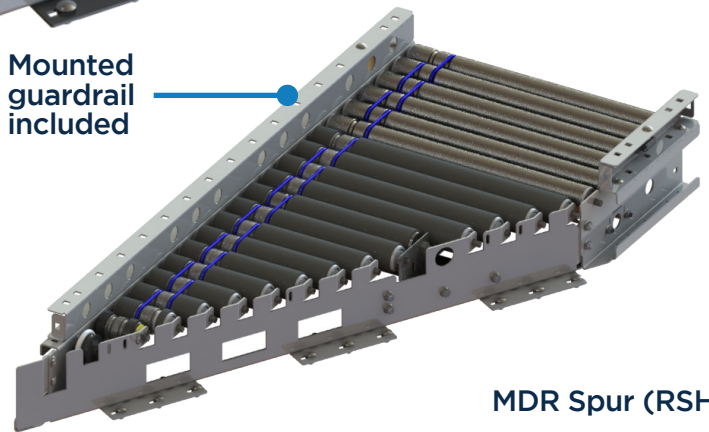
- Up to 180FPM
- O-Band

Maximum
product
weight 75lbs



MDR Spur (RSL)

Mounted
guardrail
included



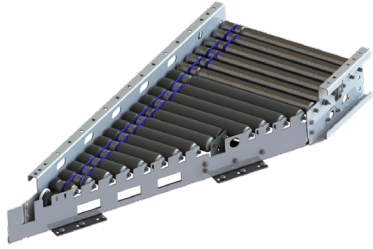
MDR Spur (RSH)

KEY FEATURES AND BENEFITS

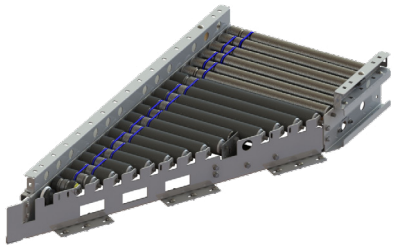
- Merge any line that is perpendicular to the MDR Spur Curve.
- Light to medium weight applications up to 75lbs.
- Resilient and durable construction. Perfect for distribution, warehouse, process lines and postal applications.
- Operates in 40° - 104°F.
- Using durable, high tension 3/16" diameter O-bands.
- Minimum product size 8" x 8" x 0.75" for 3" roller center, 6" x 6" for 2" roller center.
- Tool-less mounting brackets for control card components.
- Electrical components have quick connect terminals for easy installations and expansion.
- IP54 Standard.

MDR SPUR RSL/RSH

Series 1500 Conveyor Module



SERIES 1500 CONVEYOR - MDR SPUR, 30°, RSL							
Part #	Angle	Side Channel	Roller Center	MDR Type	Hand	Control	Color
TR15041 (15 BF) TR15042 (21 BF) TR15043 (27 BF) TR15044 (33 BF) TR15045 (36 BF)	30°	RSL	3"	EC5000	LH RH	FULL	F9022 F7035
TR15173 (15 BF) TR15174 (21 BF) TR15175 (27 BF) TR15176 (33 BF) TR15177 (36 BF)	30°	RSL	2" Nominal	EC5000	LH RH	FULL	F9022 F7035



SERIES 1500 CONVEYOR - MDR SPUR, 30°, RSH							
Part #	Angle	Side Channel	Roller Center	MDR Type	Hand	Control	Color
TR15046 (15 BF) TR15047 (21 BF) TR15048 (27 BF) TR15049 (33 BF) TR15050 (36 BF)	30°	RSH	3"	EC5000	LH RH	FULL	F9022 F7035
TR15178 (15 BF) TR15179 (21 BF) TR15180 (27 BF) TR15181 (33 BF) TR15182 (36 BF)	30°	RSH	2" Nominal	EC5000	LH RH	FULL	F9022 F7035

Engineer to order options include: IP67, flex control, additional BFs, additional zone lengths, other MDRs & gear ratios, custom rail colors. Additional options may be available upon request. Contact Trew Engineering for further information.

HCAT30

Series 1500 Conveyor Module

Controls Platform: G20 Full Control

POWERED BY

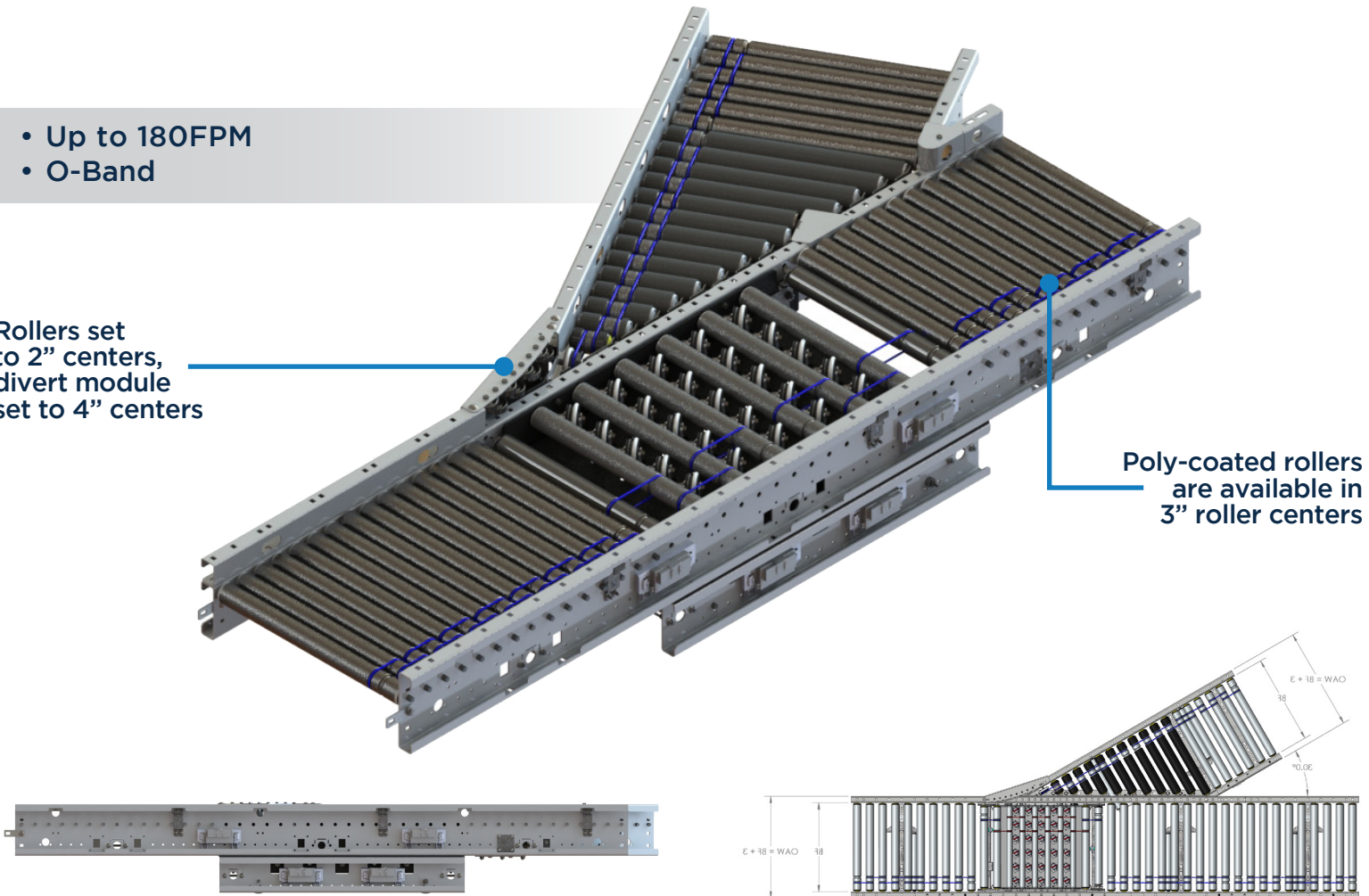
TREW®

The High-Speed Cam Actuated Transfer (HCAT30) divert modules provide a 30° angle divert capability to move packages and totes to a separate line. It uses MDR technology to drive the rollers, a cam that converts rotational motion to a reciprocating motion to lift the Pop-Up divert wheels. It is powered by 24-volt DC electricity (not pneumatic), and can divert products at a rate of 35 products/min.

- Up to 180FPM
- O-Band

Rollers set to 2" centers, divert module set to 4" centers

Poly-coated rollers are available in 3" roller centers

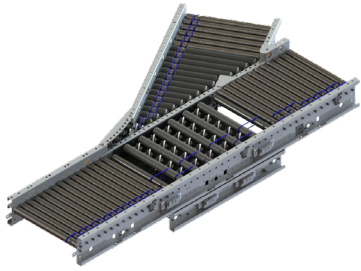


KEY FEATURES AND BENEFITS

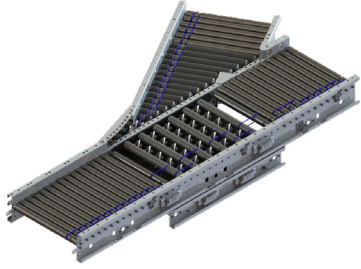
- Rate up to 35 products per min (Conditional on Application).
- Standard to medium weight applications up to 75lbs.
- Resilient and durable construction. Perfect for distribution, warehouse, process lines and postal applications.
- Operates in 40° - 104°F.
- Minimum product size 8" x 8" x 0.75".
- Electrical components have quick connect terminals for easy installations and expansion.
- Durable, high tension O-bands.
- IP54 Standard.
- Positive Drive.
- Programming Required.

HCAT30

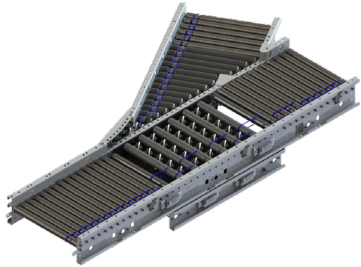
Series 1500 Conveyor Module



SERIES 1500 CONVEYOR - DIVERT (HCAT30), 24" ZONE							
Part #	Angle	Side Channel	Roller Center	MDR Type	Hand	Control	Color
TR15064 (15 BF, 72" Long) TR15065 (21 BF, 96" Long)	30°	RSL	3"	EC5000	LH RH	FULL	F9022 F7035
TR15216 (15 BF, 72" Long) TR15217 (21 BF, 96" Long)	30°	RSL	2"	EC5000	LH RH	FULL	F9022 F7035



SERIES 1500 CONVEYOR - DIVERT (HCAT30), 30" ZONE							
Part #	Angle	Side Channel	Roller Center	MDR Type	Hand	Control	Color
TR15060 (15 BF, 90" Long) TR15061 (21 BF, 90" Long) TR15062 (27 BF, 120" Long) TR15063 (33 BF, 120" Long)	30°	RSL	3"	EC5000	LH RH	FULL	F9022 F7035
TR15212 (15 BF, 90" Long) TR15213 (21 BF, 90" Long) TR15214 (27 BF, 120" Long) TR15215 (33 BF, 120" Long)	30°	RSL	2"	EC5000	LH RH	FULL	F9022 F7035



SERIES 1500 CONVEYOR - DIVERT (HCAT30), 36" ZONE							
Part #	Angle	Side Channel	Roller Center	MDR Type	Hand	Control	Color
TR15055 (15 BF, 108" Long) TR15056 (21 BF, 108" Long) TR15057 (27 BF, 108" Long) TR15058 (33 BF, 144" Long)	30°	RSL	3"	EC5000	LH RH	FULL	F9022 F7035
TR15208 (15 BF, 108" Long) TR15209 (21 BF, 108" Long) TR15210 (27 BF, 108" Long) TR15211 (33 BF, 144" Long)	30°	RSL	2"	EC5000	LH RH	FULL	F9022 F7035

Engineer to order options include: Flex control, additional BFs (including 36"BF), additional zone lengths, other MDRs & gear ratios, custom rail colors. Additional options may be available upon request. Contact Trew Engineering for further information.

DOUBLE / TRIPLE PICK & PASS

Series 1500 Conveyor Module

Controls Platform: G20 Full Control

POWERED BY

TREW®

The HCAT90 can be used in a “Pick and Pass” operation. A double pick & pass setup allows product to change its direction with less of a footprint than curves. It can also be used to send products to a different lane by use of an external barcode scanner. The HCAT90 can also be used with a triple pick & pass configuration. Here, either one or two conveying lines transports a product to the operator station and then, after its operation, will leave the station via one or two conveying lines, respectively.

- Up to 180FPM on rollers
- Up to 75lbs
- Timing Belt

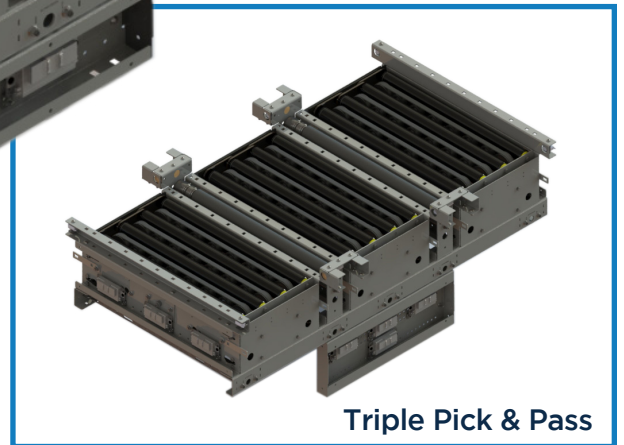
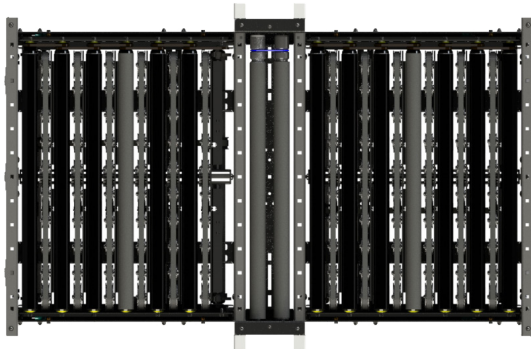


Roller Set High (RSH) configurations only

Roller Set High conveyor surrounding Double & Triple Pick & Pass is required

MDR Lift operation, no pneumatics required

Double Pick & Pass

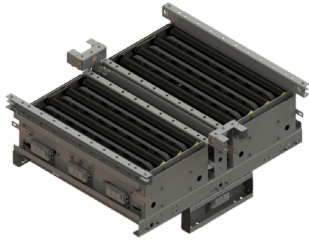


KEY FEATURES AND BENEFITS

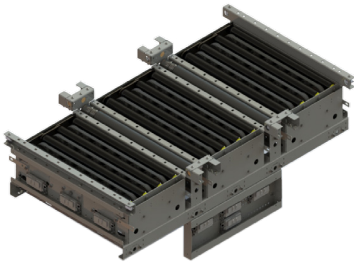
- Rate up to 30 products per min (Conditional on Application).
- Light to medium weight applications up to 75lbs.
- Resilient and durable construction. Perfect for distribution, warehouse, process lines and postal applications.
- Operates in 40° - 104°F.
- Minimum product size 9" x 9" x 0.75".
- Tool-less mounting brackets for control card components.
- Electrical components have quick connect terminals for easy installations and expansion.
- Programming Required.

DOUBLE / TRIPLE PICK & PASS

Series 1500 Conveyor Module



SERIES 1500 CONVEYOR - DOUBLE PICK & PASS								
Part #	Width (BF)	Gap	Side Channel	Roller Center	MDR Type	Hand	Control	Color
TR15144 (24" Zone) TR15146 (30" Zone) TR15148 (36" Zone)	15, 21, 27, 33, 36	3"	RSL	4"	EC5000	LH RH	AUTO FULL	F9022 F7035
TR15143 (24" Zone) TR15145 (30" Zone) TR15147 (36" Zone)	15, 21, 27, 33, 36	6"	RSL	4"	EC5000	LH RH	AUTO FULL	F9022 F7035



SERIES 1500 CONVEYOR - TRIPLE PICK & PASS								
Part #	Width (BF)	Gap	Side Channel	Roller Center	MDR Type	Hand	Control	Color
TR15150 (24" Zone) TR15152 (30" Zone) TR15154 (36" Zone)	15, 21, 27, 33, 36	3"	RSL	4"	EC5000	LH RH	AUTO FULL	F9022 F7035
TR15149 (24" Zone) TR15151 (30" Zone) TR15153 (36" Zone)	15, 21, 27, 33, 36	6"	RSL	4"	EC5000	LH RH	AUTO FULL	F9022 F7035

Engineer to order options include: Additional BFs, additional zone lengths, other MDRs & gear ratios, custom rail color. Additional options may be available upon request. Contact Trew Engineering for further information.

MDR BELTED INTERMEDIATE

Series 1500 Conveyor Module

Controls Platform: G20 Full Control & H20 Auto Control

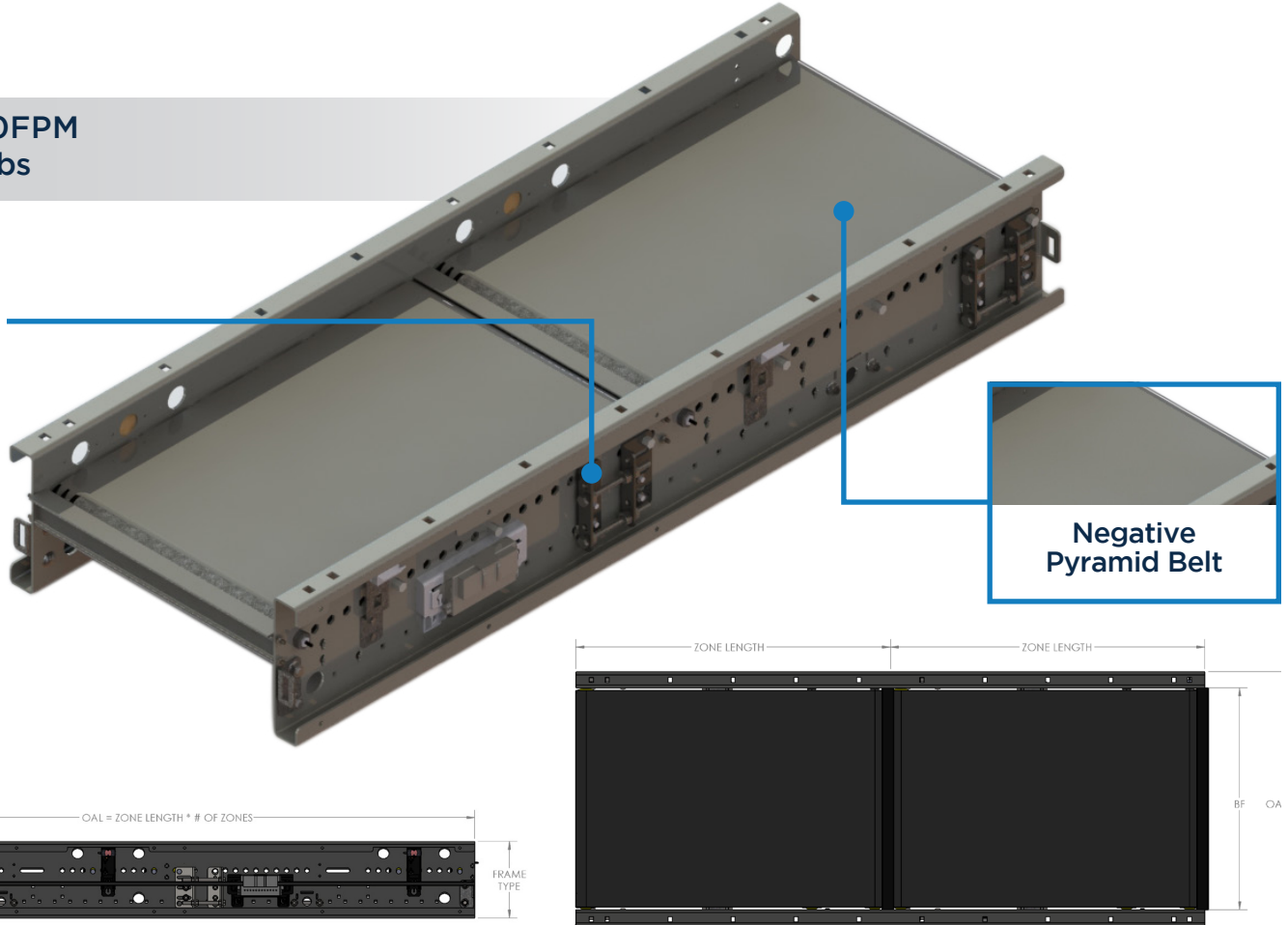
POWERED BY

TREW®

The MDR Belted (Zone) Intermediate Module utilizes a seamless belt to convey small products. The belt is commonly referred to as an inverter diamond or negative pyramid and provides a surface that can “grab” product. Belted MDR is used when the system needs to convey smaller products or requires smoother conveyance.

- Up to 150FPM
- Up to 50lbs

Take Up
Brackets
mounted on
side channel
to loosen or
tighten belts

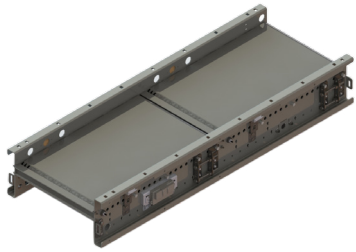


KEY FEATURES AND BENEFITS

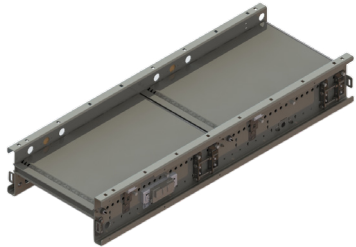
- Sensitive Product Handling.
- Take Up Bracket Per Zone for Belt Alignment.
- T-Strip between belts for smaller products transition.
- Ultra Co-Efficient Belt Surface for higher traction & durability.
- Light to medium weight applications up to 50lbs.
- Resilient and durable construction. Perfect for distribution, warehouse, process lines and postal applications.
- Operates in 40° - 104°F.
- Minimum product size 4" x 4" x 0.75".
- Tool-less mounting brackets for control card components.
- Electrical components have quick connect terminals for easy installations and expansion.
- Using durable, high tension belt.
- Available ZPA Analyzer allows for system diagnostic and commissioning.
- IP54 Standard.

MDR BELTED INTERMEDIATE

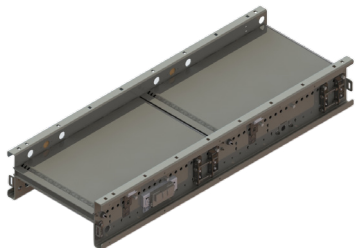
Series 1500 Conveyor Module



SERIES 1500 CONVEYOR - MDR BELTED STRAIGHT INTERMEDIATE, RSL, 24" ZONE						
Part #	Width (BF)	Side Channel	MDR Type	Hand	Control	Color
TR15082 (24" Long)	15, 21, 27, 33, 36	RSL	EC5000	LH	AUTO	F9022
TR15083 (48" Long)				RH	FULL	F7035
TR15084 (96" Long)						
TR15085 (144" Long)						



SERIES 1500 CONVEYOR - MDR BELTED STRAIGHT INTERMEDIATE, RSL, 30" ZONE							
Part #	Width (BF)	Side Channel	MDR Type	Hand	Control	Color	
TR15086 (30" Long)	15, 21, 27, 33, 36	RSL	EC5000	LH	AUTO	F9022	
TR15087 (60" Long)				RH	FULL	F7035	
TR15088 (120" Long)							



SERIES 1500 CONVEYOR - MDR BELTED STRAIGHT INTERMEDIATE, RSL, 36" ZONE							
Part #	Width (BF)	Side Channel	MDR Type	Hand	Control	Color	
TR15089 (36" Long)	15, 21, 27, 33, 36	RSL	EC5000	LH	AUTO	F9022	
TR15090 (72" Long)				RH	FULL	F7035	
TR15091 (144" Long)							

Engineer to order options include: Additional BFs, additional zone lengths, other MDRs & gear ratios, alternative photoeye locations, RSH (5.5" frame depth), food grade belts/textures, split zones, custom rail colors. Additional options may be available upon request. Contact Trew Engineering for further information.

MDR BELTED INCLINE

Series 1500 Conveyor Module

Controls Platform: G20 Full Control & H20 Auto Control

POWERED BY

TREW[®]

The MDR Belted Incline and Decline assemblies can handle product zone loads up to 50lbs at a speed of 150 fpm. These modules can be configured up to a 15-degree slope. This angle, depending on the product size, weight and center of gravity characteristics may go beyond the 15-degree limit if proper validation testing is performed. Belted incline sections contain one-way rollers to prevent product from moving when rollers are unpowered. Belted decline sections do not come with any type of brake, and function as gravity rollers when system power is lost. Like the Nose Over and Power Feeder modules, the incline and decline portion also uses the same high friction belt to prevent products from slipping or tumbling down the incline.

- Up to 150FPM
- Up to 50lbs

Take Up Brackets mounted on side channel to loosen or tighten belts

15 Degree Maximum Incline

Negative Pyramid Belt

INTERMEDIATE

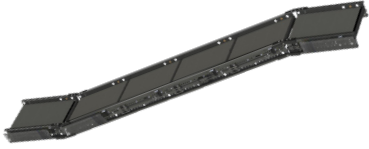
DEGREE OF INCLINE/DECLINE

KEY FEATURES AND BENEFITS

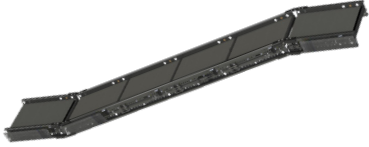
- Sensitive Product Handling.
- Take Up Bracket Per Zone for Belt Alignment.
- T-Strip between belts for smaller products transition.
- Ultra Co-Efficient Belt Surface for higher traction & durability.
- Light to medium weight applications up to 50lbs.
- Resilient and durable construction. Perfect for distribution, warehouse, process lines and postal applications.
- Operates in 40° - 104°F.
- Minimum product size 4" x 4" x 0.75".
- Tool-less mounting brackets for control card components.
- Electrical components have quick connect terminals for easy installations and expansion.
- Using durable, high tension belt.
- Available ZPA Analyzer allows for system diagnostic and commissioning.
- IP54 Standard.

MDR BELTED INCLINE

Series 1500 Conveyor Module



SERIES 1500 CONVEYOR - MDR BELTED INCLINE, RSL, 24" ZONE						
Part #	Width (BF)	Side Channel	MDR Type	Hand	Control	Color
TR15092 (24" Long)	15, 21, 27, 33, 36	RSL	EC5000	LH	AUTO	F9022
TR15093 (48" Long)				RH	FULL	F7035
TR15094 (96" Long)						
TR15095 (144" Long)						



SERIES 1500 CONVEYOR - MDR BELTED INCLINE, RSL, 30" ZONE							
Part #	Width (BF)	Side Channel	MDR Type	Hand	Control	Color	
TR15096 (30" Long)	15, 21, 27, 33, 36	RSL	EC5000	LH	AUTO	F9022	
TR15097 (60" Long)				RH	FULL	F7035	
TR15098 (120" Long)							



SERIES 1500 CONVEYOR - MDR BELTED INCLINE, RSL, 36" ZONE							
Part #	Width (BF)	Side Channel	MDR Type	Hand	Control	Color	
TR15099 (36" Long)	15, 21, 27, 33, 36	RSL	EC5000	LH	AUTO	F9022	
TR15100 (72" Long)				RH	FULL	F7035	
TR15101 (144" Long)							

Engineer to order options include: Additional BFs, additional zone lengths, other MDRs & gear ratios, alternative photoeye locations, RSH (5.5" frame depth), food grade belts/textures, split zones, custom rail colors. Additional options may be available upon request. Contact Trew Engineering for further information.

MDR BELTED NOSE OVER / POWER FEEDER

Series 1500 Conveyor Module

Controls Platform: G20 Full Control & H20 Auto Control

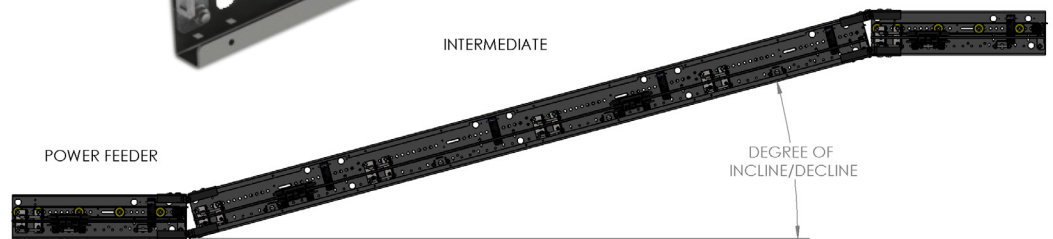
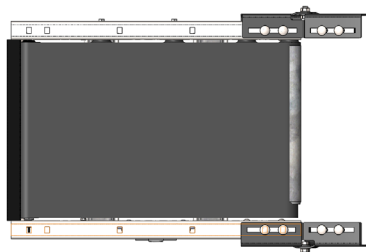
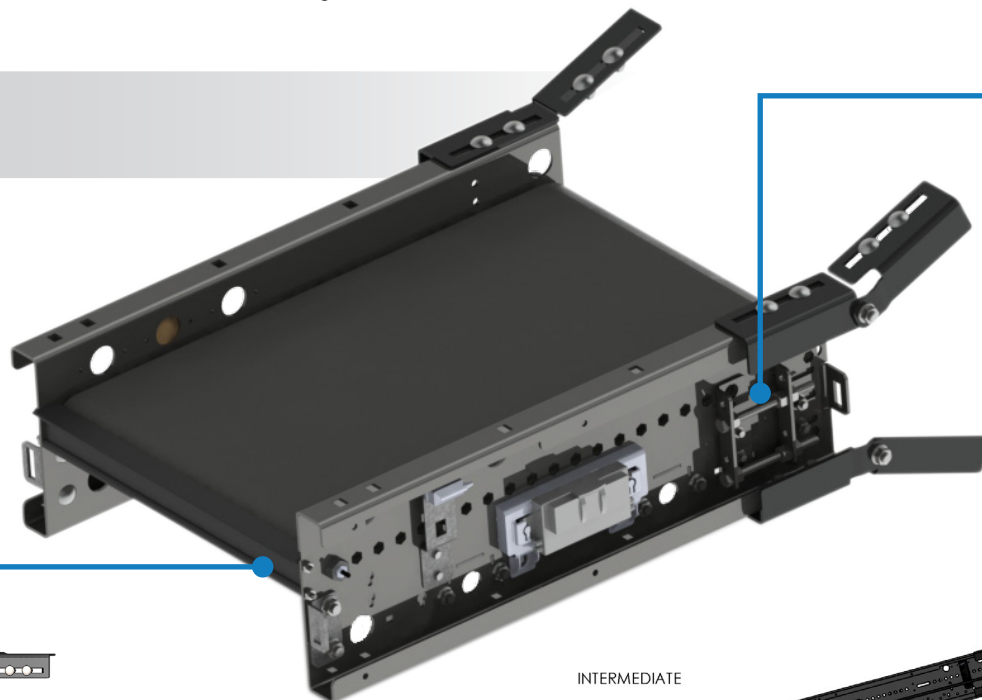
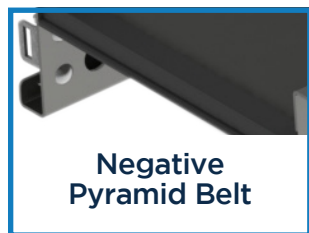
POWERED BY

TREW[®]

The Nose Over/ Power Feeder module is used in MDR Belted Incline and Decline conveyor modules where the use of a high friction belt is employed to reduce the risk of product tumbling down the incline. Conventional naming terminology of this module depends on the location of this module and is as follows: This module is called a Nose over when it is located at the top of the MDR Belted Incline or Decline conveyor. This module is called a “Power Feeder” when it is located at the bottom of the MDR Belted Incline or Decline Conveyor

- Up to 150FPM
- Up to 50lbs

Take Up Brackets mounted on side channel to loosen or tighten belts



KEY FEATURES AND BENEFITS

- Sensitive Product Handling.
- Take Up Bracket Per Zone for Belt Alignment.
- T-Strip between belts for smaller products transition.
- Ultra Co-Efficient Belt Surface for higher traction & durability.
- Light to medium weight applications up to 50lbs.
- Resilient and durable construction. Perfect for distribution, warehouse, process lines and postal applications.
- Operates in 40° - 104°F.
- Minimum product size 4" x 4" x 0.75".
- Tool-less mounting brackets for control card components.
- Electrical components have quick connect terminals for easy installations and expansion.
- Using durable, high tension belt.
- Available ZPA Analyzer allows for system diagnostic and commissioning.
- IP54 Standard.

MDR BELTED NOSE OVER / POWER FEEDER

Series 1500 Conveyor Module



SERIES 1500 CONVEYOR - BELTED NOSE OVER / POWER FEEDER, RSL, INFEED							
Part #	Width (BF)	Bracket Option	Side Channel	MDR Type	Hand	Control	Color
TR15112 (24" Zone) TR15113 (30" Zone) TR15114 (36" Zone)	15, 21, 27, 33, 36	Infeed	RSL	EC5000	LH RH	AUTO FULL	F9022 F7035



SERIES 1500 CONVEYOR - BELTED NOSE OVER / POWER FEEDER, RSL, DISCHARGE							
Part #	Width (BF)	Bracket Option	Side Channel	MDR Type	Hand	Control	Color
TR15115 (24" Zone) TR15116 (30" Zone) TR15117 (36" Zone)	15, 21, 27, 33, 36	Discharge	RSL	EC5000	LH RH	AUTO FULL	F9022 F7035

Engineer to order options include: Additional BFs, additional zone lengths, other MDRs & gear ratios, food grade belts / textures, custom rail colors. Additional options may be available upon request. Contact Trew Engineering for further information.

MDR BELTED SCAN BED

Series 1500 Conveyor Module

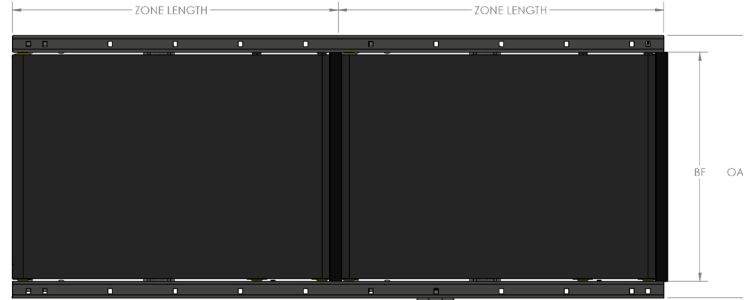
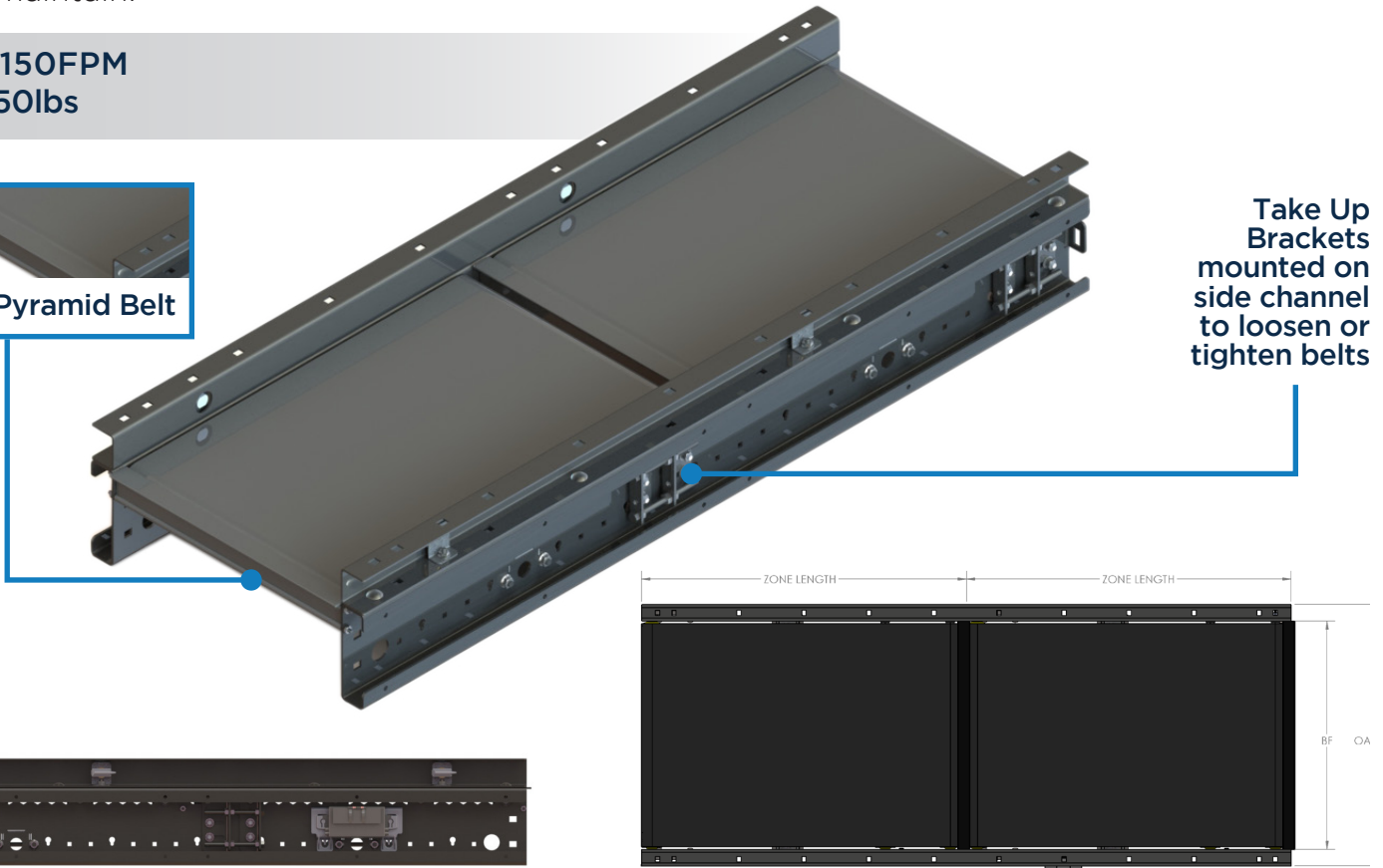
Controls Platform: G20 Full Control & H20 Auto Control

POWERED BY

TREW®

MDR belted scan bed modules have a high friction belt that holds product in location and helps maintain product alignment, perfect for print and apply applications and small and light products and bags. Removeable guide rails allow for easy external mounting of scanners. Pre-wired conveyor sections are networked with bus technology and easily configured for multiple applications. All electric operation ensures a consistent and quiet system that is easy to maintain.

- Up to 150FPM
- Up to 50lbs

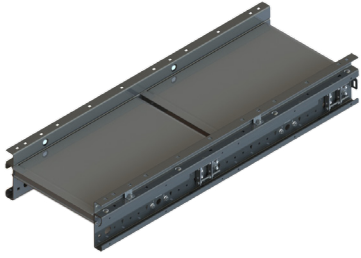


KEY FEATURES AND BENEFITS

- Sensitive Product Handling.
- Take Up Bracket Per Zone for Belt Alignment.
- T-Strip between belts for smaller products transition.
- Ultra Co-Efficient Belt Surface for higher traction & durability.
- Light to medium weight applications up to 50lbs.
- Resilient and durable construction. Perfect for distribution, warehouse, process lines and postal applications.
- Durable, high tension belt.
- Operates in 40° - 104°F.
- Minimum product size 4" x 4" x 0.75".
- Removable guard rail allows for externally-mounted scanner & photoeye.
- 5.5" tall side rail with 2" guard rail to match up with standard RSL rail.
- Tool-less mounting brackets control card components.
- Electrical components have quick connect terminals for easy installations and expansion.
- IP54 Standard.

MDR BELTED SCAN BED

Series 1500 Conveyor Module



SERIES 1500 CONVEYOR - MDR BELTED SCAN BED						
Part #	Width (BF)	Side Channel	MDR Type	Hand	Control	Color
TR15051 (48" OAL, 24" Long) TR15052 (60" OAL, 30" Long) TR15053 (72" OAL, 36" Long)	15, 21, 27, 33, 36	RSH*	EC5000	LH RH	AUTO FULL	F9022 F7035

*5.5" RSH Rail with 2" Guard Rail

Engineer to order options include: Additional BFs, additional zone lengths, other MDRs & gear ratios, alternative photoeye locations, RSH (5.5" frame depth), food grade belts/textures, split zones, custom rail colors. Additional options may be available upon request. Contact Trew Engineering for further information.

POWERED BY

TREW[®]

ENGINEERED TO ORDER

CONVEYOR MODULES

Series 1500 - Interroll EC5000



MDR SPIRAL

Series 1500 ETO Conveyor Module

Controls Platform: G20 Full Control & H20 Auto Control

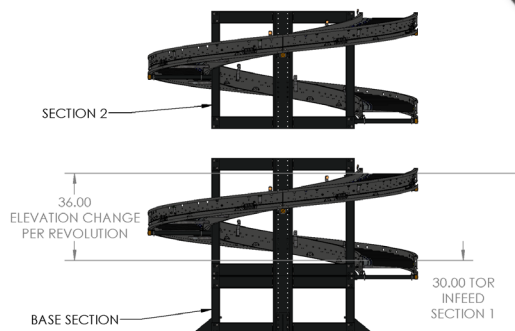
POWERED BY

TREW®

MDR spirals enable major elevation change in a small footprint. This allows height differences to be bridged while retaining a smooth flow of product. Built-in zero pressure accumulation (ZPA) and polyurethane sleeves on the rollers come standard. The modules are also reversible. Pre-wired modules can be networked with bus technology, which enables custom control and fully visible diagnostics. All electric operation ensures a consistent and quiet system that is easy to maintain.

- Up to 180FPM
- O-Band

Roller Set Low (RSL) configurations only



KEY FEATURES AND BENEFITS

- Enable major elevation change in a small footprint.
- Light to medium weight applications up to 75lbs.
- Ships In Manageable Sections For Easy Transportation.
- Modular Design Allows For Easy Expansion.
- Resilient and durable construction. Perfect for distribution, warehouse, process lines and postal applications.
- Using durable, high tension 3/16" diameter O-bands.
- Minimum product size 8" x 8" x 0.75".
- Tool-less mounting brackets for control card components.
- Electrical components have quick connect terminals for easy installations and expansion.
- Operates in 40° - 104°F.
- IP54 Standard.

MDR SPIRAL CURVE

Series 1500 ETO Conveyor Module

Controls Platform: G20 Full Control & H20 Auto Control

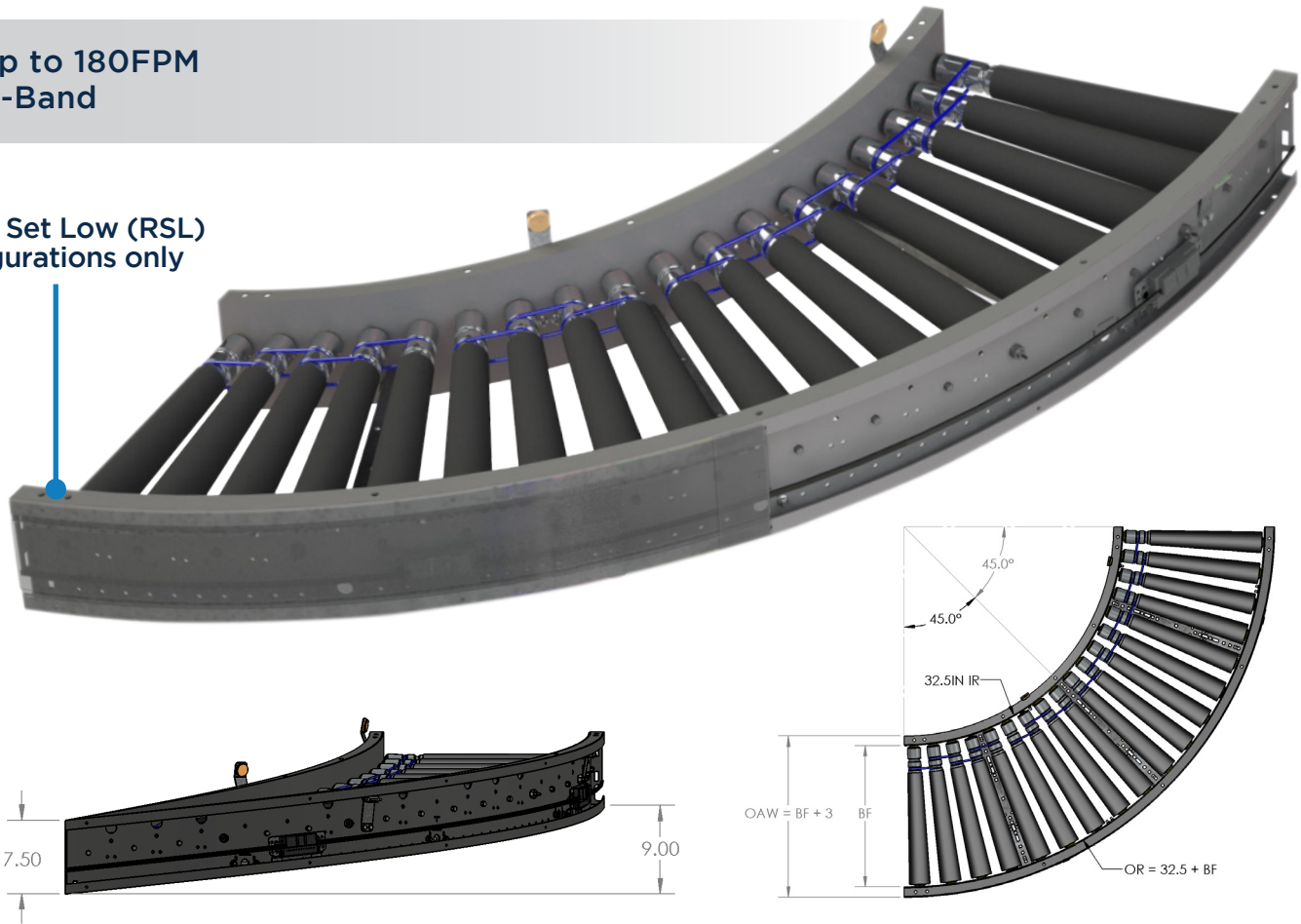
POWERED BY

TREW[®]

Spiral curve modules can be used as a stand-alone elevation change or combine together to create an inclining or declining spiral, which allows for an elevation change in a small footprint. The pre-wired spiral curve module has built-in zero pressure accumulation and can be networked with bus technology, which enables custom control and fully visible diagnostics. All electric operation ensures a consistent and quiet system that is easy to maintain.

- Up to 180FPM
- O-Band

Roller Set Low (RSL) configurations only



KEY FEATURES AND BENEFITS

- Use as a stand-alone elevation change or combine together to create an inclining or declining spiral.
- Light to medium weight applications up to 75lbs.
- Resilient and durable construction. Perfect for distribution, warehouse, process lines and postal applications.
- Tool-less mounting brackets for control card components.
- Minimum product size 8" x 8" x 0.75".
- Electrical components have quick connect terminals for easy installations and expansion.
- Using durable, high tension 3/16" diameter O-bands.
- Available ZPA Analyzer allows for system diagnostic and commissioning.
- Operates in 40° - 104°F.
- IP54 Standard.

MDR DOUBLE HELIX SPIRAL

Series 1500 ETO Conveyor Module

Controls Platform: G20 Full Control & H20 Auto Control

POWERED BY

TREW[®]

Save space and improve conveyor flow in your operation with Trew's motorized roller conveyor spirals. The Series 1500 double helix spirals provide smooth accumulation while making major incline and decline elevation changes in the same small footprint. Built-in zero pressure accumulation (ZPA) and polyurethane sleeved rollers come standard to ensure high density accumulation and that product conveys without slipping or toppling.

The unique 24VDC all electric design is pre-wired with snap-in brackets and quick connect cables for easy installation. The on-conveyor control modules can use built-in ZPA logic or be accessed as network IO for system level PLC controls. The modular mechanical design enables easy shipment and quick installation. Product flow can be both incline, both decline, or alternated incline and decline.



- Up to 150FPM
- Incline & Decline



KEY FEATURES AND BENEFITS

- Clockwise or counter clockwise configuration.
- Enable incline and decline elevation change in the same small footprint.
- Light to medium weight applications up to 60lbs.
- Incline curves include anti-rollback rollers in each zone to provide mechanical brake for accumulation.
- Operates in 40° - 104°F.
- Durable, coated rollers and high tension 1/4" O-bands.
- Minimum product size 8" x 8" x 1".
- Maximum product size 24" x 11" x 8".
- Snap on tool-less mounting brackets for control card components and quick connect terminals for all electrical components.
- Available in Auto and Full Control.
- Available in 4' increments.
- IP54 Standard.

MDR TREWflow DECLINE

Series 1500 ETO Conveyor Module

Controls Platform: G20 Full Control

POWERED BY

TREW®

MDR TREWflow is designed to relieve the built-up product “back-pressure” on decline conveyor, helping to prevent side by sides and allow easy removal of packages at the discharge end of the conveyor. TREWflow is an all-electronic design with specialized logic to automatically manage flow, maximize the amount of product on the conveyor and establishing a zero-pressure discharge zone. After the discharge product is removed, accumulated products move forward presenting the next product to the operator.

- Powered subzones run up to 120FPM
- Designed for 3° - 15° declines
- Up to 50lbs per zone
- 24VDC all-electric design
- IP54 environmental rating



KEY FEATURES AND BENEFITS

- Light to medium weight applications.
- Resilient and durable construction - perfect for distribution, warehouse, process lines and postal applications.
- Electrical components have quick connect terminals for easy installations and expansion.
- Toolless mounting brackets for control card components .
- Pre-mounted zone controls connected with networked bus technology for quick installation and commissioning.
- Temperature: 40° - 104°F.
- Minimum product size (lxwxh):
- Minimum product size 8" x 8" x 0.75" for 3" roller center, 6" x 6" for 2" roller center.
- Product Weight: 3 - 60lbs per zone (nominal), other weights (>60lbs) upon request.
- Rollers Set: 1.9" Rollers Set Low.
- Roller Centers: 3" standard (2" or 6" consult engineering).