

MDR SPUR RSL/RSH

Series 1500 Conveyor Module

Controls Platform: G20 Full Control

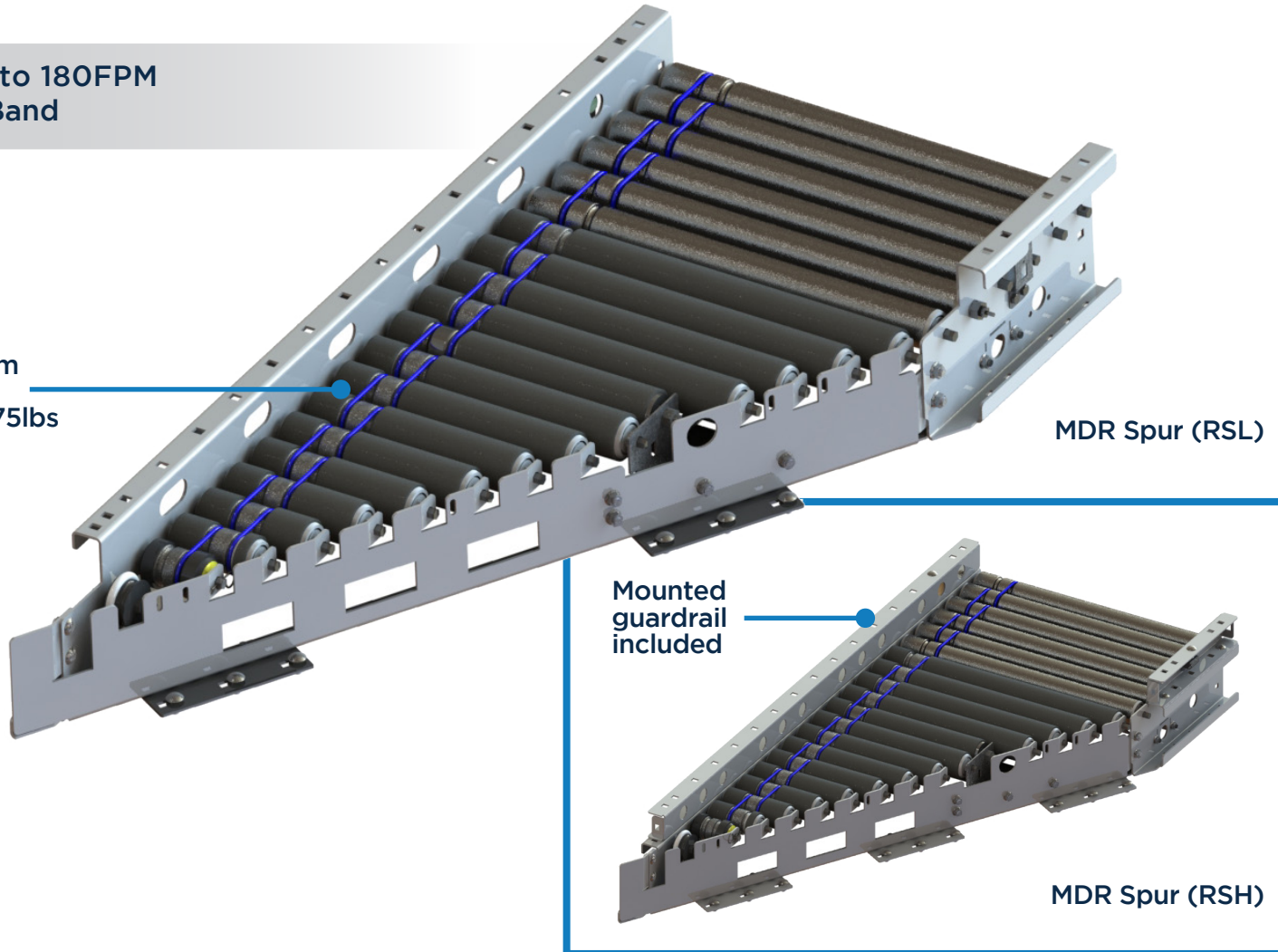
POWERED BY

TREW[®]

The MDR Spur module is an add-on module for product merge and divert needs. Spur Modules are fixed at 30° and can be placed nearly anywhere on a new or existing system. It is available in Rollers Set High (RSH) and Rollers Set Low (RSL), 2 & 3" roller centers and uses either a Retro-Reflective or Diffused photoeye sensor.

- Up to 180FPM
- O-Band

Maximum
product
weight 75lbs

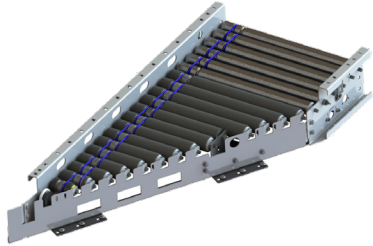


KEY FEATURES AND BENEFITS

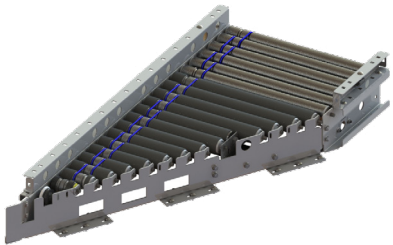
- Merge any line that is perpendicular to the MDR Spur Curve.
- Light to medium weight applications up to 75lbs.
- Resilient and durable construction. Perfect for distribution, warehouse, process lines and postal applications.
- Operates in 40° - 104°F.
- Using durable, high tension 3/16" diameter O-bands.
- Minimum product size 8" x 8" x 0.75" for 3" roller center, 6" x 6" for 2" roller center.
- Tool-less mounting brackets for control card components.
- Electrical components have quick connect terminals for easy installations and expansion.
- IP54 Standard.

MDR SPUR RSL/RSH

Series 1500 Conveyor Module



SERIES 1500 CONVEYOR - MDR SPUR, 30°, RSL							
Part #	Angle	Side Channel	Roller Center	MDR Type	Hand	Control	Color
TR15041 (15 BF) TR15042 (21 BF) TR15043 (27 BF) TR15044 (33 BF) TR15045 (36 BF)	30°	RSL	3"	EC5000	LH RH	FULL	F9022 F7035
TR15173 (15 BF) TR15174 (21 BF) TR15175 (27 BF) TR15176 (33 BF) TR15177 (36 BF)	30°	RSL	2" Nominal	EC5000	LH RH	FULL	F9022 F7035



SERIES 1500 CONVEYOR - MDR SPUR, 30°, RSH							
Part #	Angle	Side Channel	Roller Center	MDR Type	Hand	Control	Color
TR15046 (15 BF) TR15047 (21 BF) TR15048 (27 BF) TR15049 (33 BF) TR15050 (36 BF)	30°	RSH	3"	EC5000	LH RH	FULL	F9022 F7035
TR15178 (15 BF) TR15179 (21 BF) TR15180 (27 BF) TR15181 (33 BF) TR15182 (36 BF)	30°	RSH	2" Nominal	EC5000	LH RH	FULL	F9022 F7035

Engineer to order options include: IP67, flex control, additional BFs, additional zone lengths, other MDRs & gear ratios, custom rail colors. Additional options may be available upon request. Contact Trew Engineering for further information.