

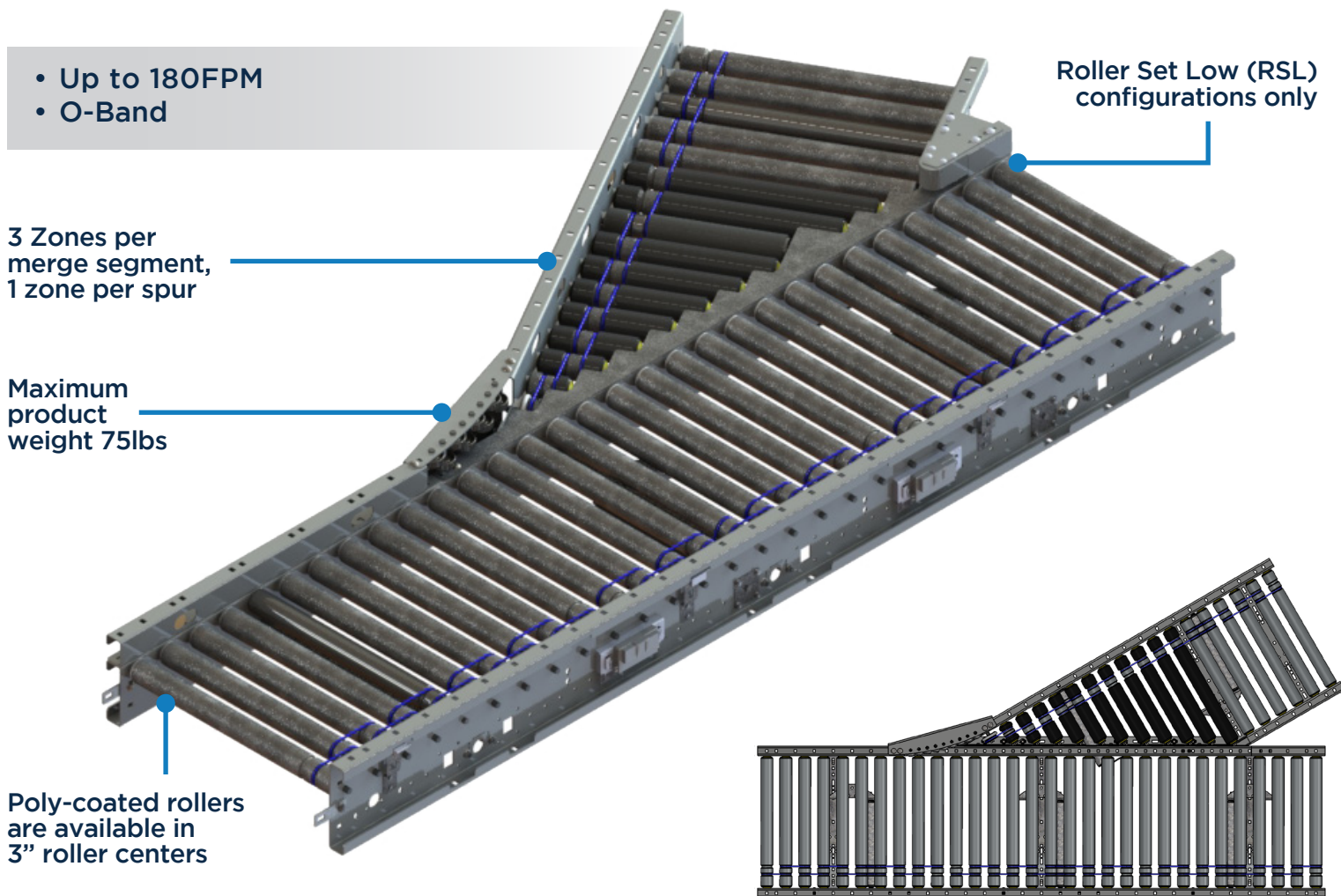
MDR MERGE

Series 1500 Conveyor Module

Controls Platform: G20 Full Control

POWERED BY
TREW[®]

The MDR Merge module is used to integrate two different conveyor lines into a single line. This merger can be accomplished by integrating a tapered, straight 30 degree “spur” onto a straight intermediate bed and adjusting its zone control behavior. The MDR Merge is only available in RSL configuration, 2 and 3” roller centers, and it uses the retro-reflective photoeye sensor. This module can achieve a 40 products/min throughput rate.

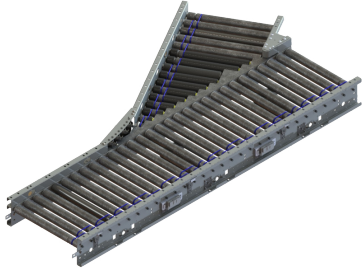


KEY FEATURES AND BENEFITS

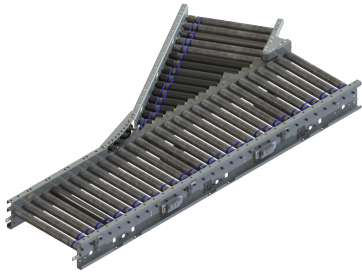
- Merge Rate up to 40 cases per minute.
- Light to medium weight applications up to 75lbs.
- Resilient and durable construction. Perfect for distribution, warehouse, process lines and postal applications.
- Using durable, high tension 3/16” diameter O-bands.
- Operates in 40° - 104°F.
- Minimum product size 8” x 8” x 0.75” for 3” roller center, 6” x 6” for 2” roller center.
- Tool-less mounting brackets for control card components.
- Electrical components have quick connect terminals for easy installations and expansion.
- IP54 Standard.

MDR MERGE

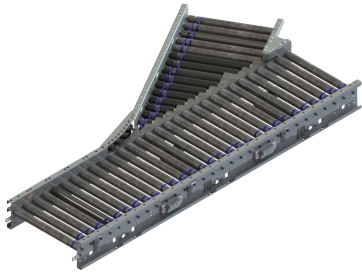
Series 1500 Conveyor Module



SERIES 1500 CONVEYOR - MDR MERGE, 24" ZONE							
Part #	Angle	Side Channel	Roller Center	MDR Type	Hand	Control	Color
TR15076 (15 BF, 72" Long) TR15077 (21 BF, 96" Long) TR15078 (27 BF, 96" Long) TR15079 (33 BF, 120" Long) TR15080 (36 BF, 120" Long)	30°	RSL	3"	EC5000	LH RH	FULL	F9022 F7035
TR15192 (15 BF, 72" Long) TR15193 (21 BF, 96" Long) TR15194 (27 BF, 96" Long) TR15195 (33 BF, 120" Long) TR15196 (36 BF, 120" Long)	30°	RSL	2"	EC5000	LH RH	FULL	F9022 F7035



SERIES 1500 CONVEYOR - MDR MERGE, 30" ZONE							
Part #	Angle	Side Channel	Roller Center	MDR Type	Hand	Control	Color
TR15072 (15 BF, 90" Long) TR15073 (21 BF, 90" Long) TR15074 (27 BF, 120" Long) TR15075 (33 BF, 120" Long) TR15081 (36 BF, 120" Long)	30°	RSL	3"	EC5000	LH RH	FULL	F9022 F7035
TR15188 (15 BF, 90" Long) TR15189 (21 BF, 90" Long) TR15190 (27 BF, 120" Long) TR15191 (33 BF, 120" Long) TR15197 (36 BF, 120" Long)	30°	RSL	2"	EC5000	LH RH	FULL	F9022 F7035



SERIES 1500 CONVEYOR - MDR MERGE, 36" ZONE							
Part #	Angle	Side Channel	Roller Center	MDR Type	Hand	Control	Color
TR15067 (15 BF, 108" Long) TR15068 (21 BF, 108" Long) TR15069 (27 BF, 108" Long) TR15070 (33 BF, 144" Long) TR15071 (36 BF, 144" Long)	30°	RSL	3"	EC5000	LH RH	FULL	F9022 F7035
TR15183 (15 BF, 108" Long) TR15184 (21 BF, 108" Long) TR15185 (27 BF, 108" Long) TR15186 (33 BF, 144" Long) TR15187 (36 BF, 144" Long)	30°	RSL	2"	EC5000	LH RH	FULL	F9022 F7035

Engineer to order options include: Flex control, additional BFs, additional zone lengths, other MDRs & gear ratios, custom rail colors. Additional options may be available upon request. Contact Trew Engineering for further information.