

MDR BELTED INTERMEDIATE

Series 1500 Conveyor Module

Controls Platform: G20 Full Control & H20 Auto Control

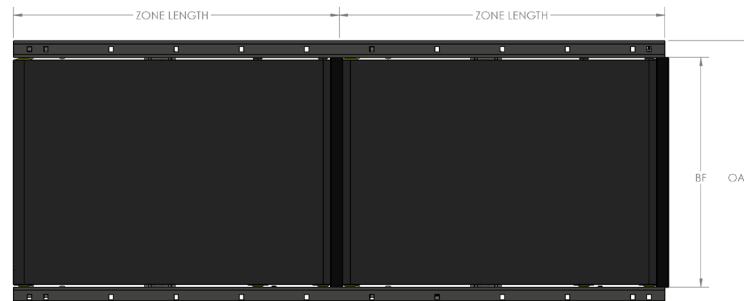
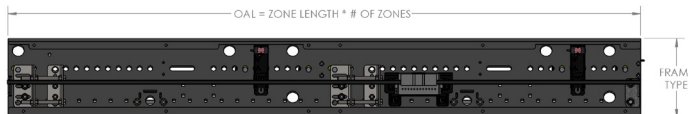
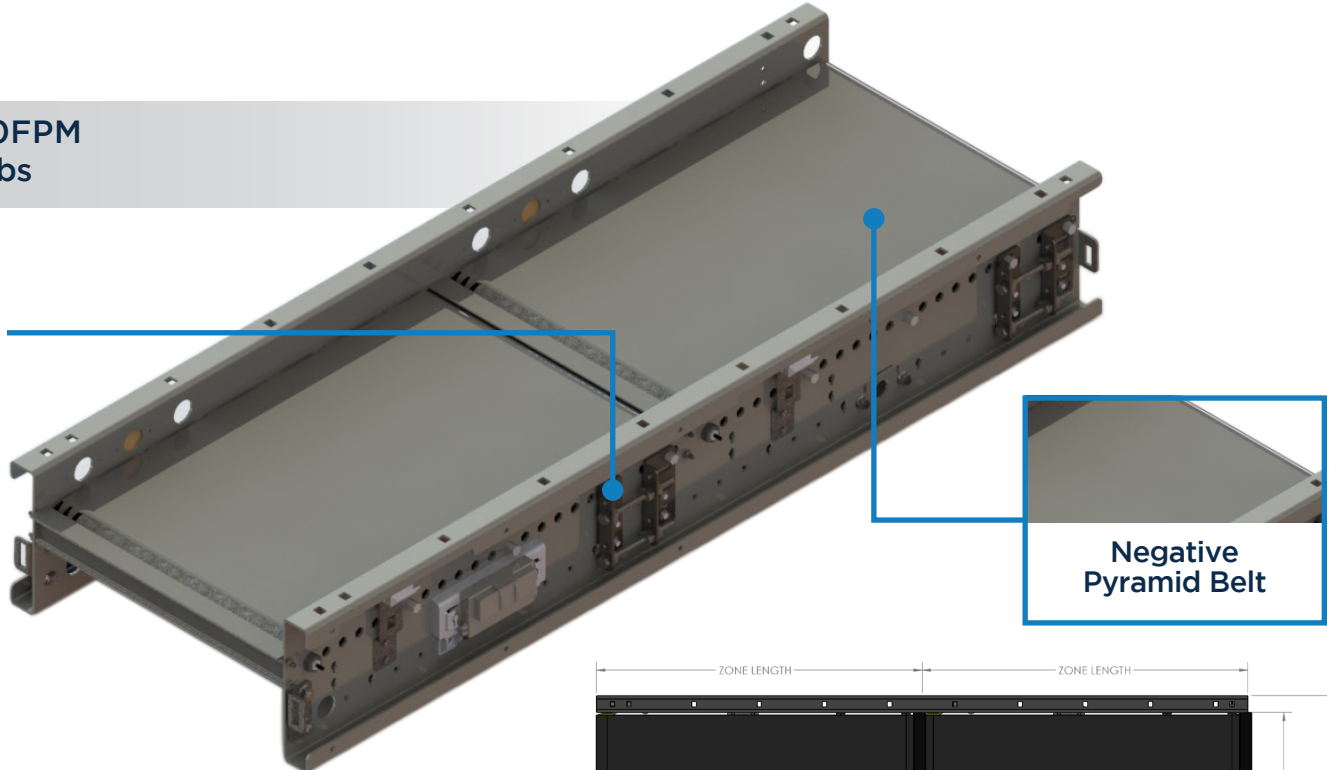
POWERED BY

TREW[®]

The MDR Belted (Zone) Intermediate Module utilizes a seamless belt to convey small products. The belt is commonly referred to as an inverter diamond or negative pyramid and provides a surface that can “grab” product. Belted MDR is used when the system needs to convey smaller products or requires smoother conveyance.

- Up to 150FPM
- Up to 50lbs

Take Up
Brackets
mounted on
side channel
to loosen or
tighten belts

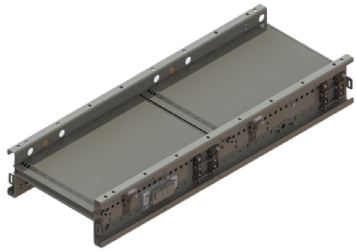


KEY FEATURES AND BENEFITS

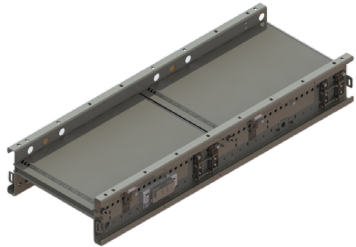
- Sensitive Product Handling.
- Take Up Bracket Per Zone for Belt Alignment.
- T-Strip between belts for smaller products transition.
- Ultra Co-Efficient Belt Surface for higher traction & durability.
- Light to medium weight applications up to 50lbs.
- Resilient and durable construction. Perfect for distribution, warehouse, process lines and postal applications.
- Operates in 40° - 104°F.
- Minimum product size 4" x 4" x 0.75".
- Tool-less mounting brackets for control card components.
- Electrical components have quick connect terminals for easy installations and expansion.
- Using durable, high tension belt.
- Available ZPA Analyzer allows for system diagnostic and commissioning.
- IP54 Standard.

MDR BELTED INTERMEDIATE

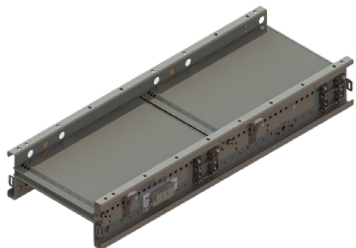
Series 1500 Conveyor Module



SERIES 1500 CONVEYOR - MDR BELTED STRAIGHT INTERMEDIATE, RSL, 24" ZONE						
Part #	Width (BF)	Side Channel	MDR Type	Hand	Control	Color
TR15082 (24" Long)	15, 21, 27, 33, 36	RSL	EC5000	LH	AUTO	F9022
TR15083 (48" Long)				RH	FULL	F7035
TR15084 (96" Long)						
TR15085 (144" Long)						



SERIES 1500 CONVEYOR - MDR BELTED STRAIGHT INTERMEDIATE, RSL, 30" ZONE						
Part #	Width (BF)	Side Channel	MDR Type	Hand	Control	Color
TR15086 (30" Long)	15, 21, 27, 33, 36	RSL	EC5000	LH	AUTO	F9022
TR15087 (60" Long)				RH	FULL	F7035
TR15088 (120" Long)						



SERIES 1500 CONVEYOR - MDR BELTED STRAIGHT INTERMEDIATE, RSL, 36" ZONE						
Part #	Width (BF)	Side Channel	MDR Type	Hand	Control	Color
TR15089 (36" Long)	15, 21, 27, 33, 36	RSL	EC5000	LH	AUTO	F9022
TR15090 (72" Long)				RH	FULL	F7035
TR15091 (144" Long)						

Engineer to order options include: Additional BFs, additional zone lengths, other MDRs & gear ratios, alternative photoeye locations, RSH (5.5" frame depth), food grade belts/textures, split zones, custom rail colors. Additional options may be available upon request. Contact Trew Engineering for further information.