

HCAT90

Series 1500 Conveyor Module

Controls Platform: G20 Full Control

POWERED BY
TREW[®]

The High-Speed Cam Actuated Transfer (HCAT90) divert modules provide a 90° right angle divert capability to divert product for user purposes. In general, the HCAT90 module is used when a small real estate footprint is required or for special user operations. This module can achieve a 30 products/min throughput rate.

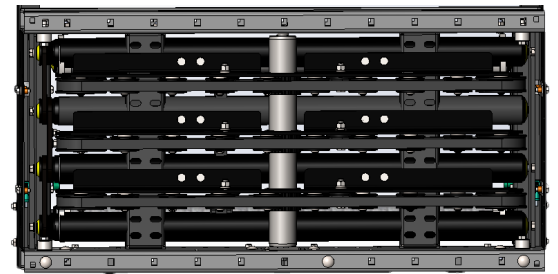
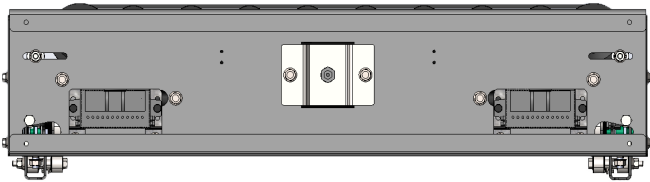
- Up to 180FPM on rollers
- 4" Roller centers

Roller Set High (RSH) configurations only

MDR Lift operation, no pneumatics required

Timing belt

Roller Set High conveyor surrounding HCAT90s is required

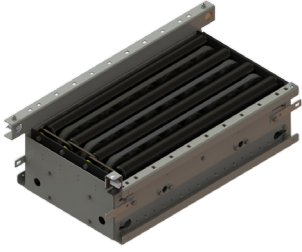


KEY FEATURES AND BENEFITS

- Rate up to 25 products per min (Conditional on Application).
- Standard to medium weight applications up to 75lbs.
- Resilient and durable construction. Perfect for distribution, warehouse, process lines and postal applications.
- Tool-less mounting brackets for control card components.
- Using durable Timing Belts.
- Electrical components have quick connect terminals for easy installations and expansion.
- Minimum product size: 9" x 9" x 0.75" for 2" and 3" roller center.
- IP54 Standard.
- Positive Drive, Poly V-Band.
- Programming Required.
- Operates in 40° - 104°F.

HCAT90

Series 1500 Conveyor Module



SERIES 1500 CONVEYOR - HCAT90							
Part #	Width (BF)	Side Channel	Roller Center	MDR Type	Hand	Control	Color
TR15140 (24" Zone) TR15141 (30" Zone) TR15142 (36" Zone)	15, 21, 27, 33, 36	RSH	4"	EC5000	LH RH	FULL	F9022 F7035

Engineer to order options include: Additional BFs, additional zone lengths, other MDRs & gear ratios, alternative lift motors, custom rail color. Additional options may be available upon request. Contact Trew Engineering for further information.