

# HCAT30

## Series 1500 Conveyor Module

Controls Platform: G20 Full Control

POWERED BY

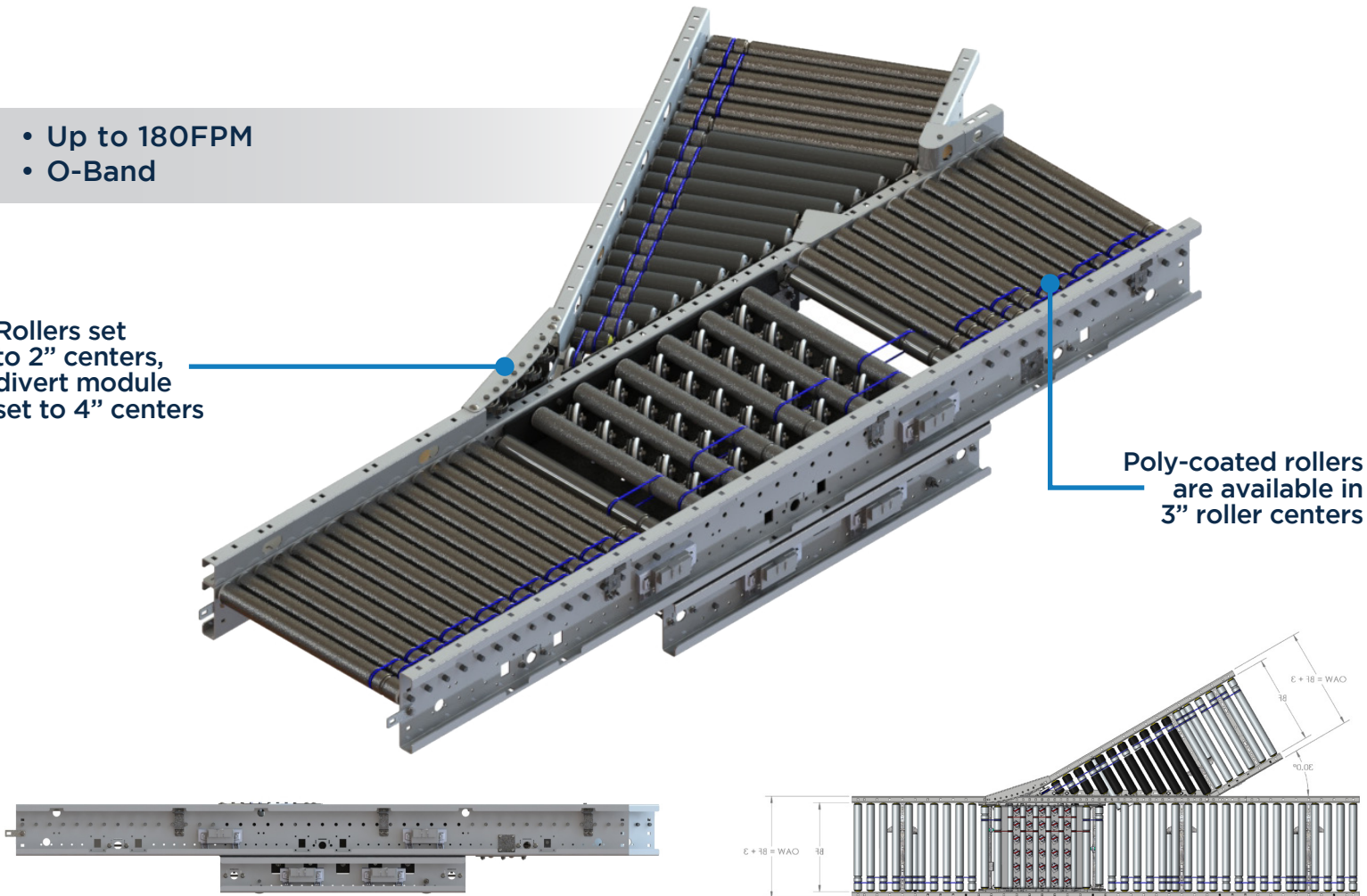
**TREW**<sup>®</sup>

The High-Speed Cam Actuated Transfer (HCAT30) divert modules provide a 30° angle divert capability to move packages and totes to a separate line. It uses MDR technology to drive the rollers, a cam that converts rotational motion to a reciprocating motion to lift the Pop-Up divert wheels. It is powered by 24-volt DC electricity (not pneumatic), and can divert products at a rate of 35 products/min.

- Up to 180FPM
- O-Band

Rollers set to 2" centers, divert module set to 4" centers

Poly-coated rollers are available in 3" roller centers

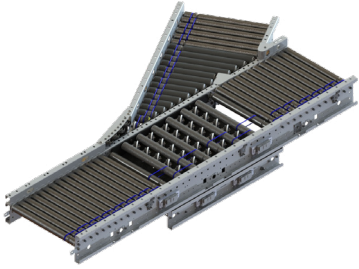


## KEY FEATURES AND BENEFITS

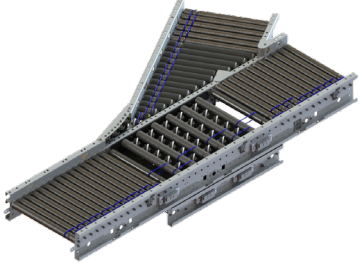
- Rate up to 35 products per min (Conditional on Application).
- Standard to medium weight applications up to 75lbs.
- Resilient and durable construction. Perfect for distribution, warehouse, process lines and postal applications.
- Operates in 40° - 104°F.
- Minimum product size 8" x 8" x 0.75".
- Electrical components have quick connect terminals for easy installations and expansion.
- Durable, high tension O-bands.
- IP54 Standard.
- Positive Drive.
- Programming Required.

# HCAT30

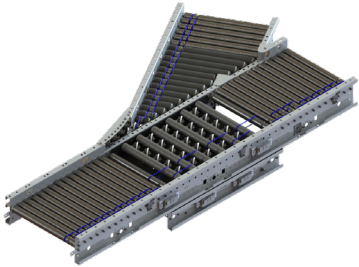
## Series 1500 Conveyor Module



SERIES 1500 CONVEYOR - DIVERT (HCAT30), 24" ZONE							
Part #	Angle	Side Channel	Roller Center	MDR Type	Hand	Control	Color
TR15064 (15 BF, 72" Long) TR15065 (21 BF, 96" Long)	30°	RSL	3"	EC5000	LH RH	FULL	F9022 F7035
TR15216 (15 BF, 72" Long) TR15217 (21 BF, 96" Long)	30°	RSL	2"	EC5000	LH RH	FULL	F9022 F7035



SERIES 1500 CONVEYOR - DIVERT (HCAT30), 30" ZONE							
Part #	Angle	Side Channel	Roller Center	MDR Type	Hand	Control	Color
TR15060 (15 BF, 90" Long) TR15061 (21 BF, 90" Long) TR15062 (27 BF, 120" Long) TR15063 (33 BF, 120" Long)	30°	RSL	3"	EC5000	LH RH	FULL	F9022 F7035
TR15212 (15 BF, 90" Long) TR15213 (21 BF, 90" Long) TR15214 (27 BF, 120" Long) TR15215 (33 BF, 120" Long)	30°	RSL	2"	EC5000	LH RH	FULL	F9022 F7035



SERIES 1500 CONVEYOR - DIVERT (HCAT30), 36" ZONE							
Part #	Angle	Side Channel	Roller Center	MDR Type	Hand	Control	Color
TR15055 (15 BF, 108" Long) TR15056 (21 BF, 108" Long) TR15057 (27 BF, 108" Long) TR15058 (33 BF, 144" Long)	30°	RSL	3"	EC5000	LH RH	FULL	F9022 F7035
TR15208 (15 BF, 108" Long) TR15209 (21 BF, 108" Long) TR15210 (27 BF, 108" Long) TR15211 (33 BF, 144" Long)	30°	RSL	2"	EC5000	LH RH	FULL	F9022 F7035

**Engineer to order options include: Flex control, additional BFs (including 36"BF), additional zone lengths, other MDRs & gear ratios, custom rail colors. Additional options may be available upon request. Contact Trew Engineering for further information.**