

DOUBLE / TRIPLE PICK & PASS

Series 1500 Conveyor Module

Controls Platform: G20 Full Control

POWERED BY

TREW®

The HCAT90 can be used in a “Pick and Pass” operation. A double pick & pass setup allows product to change its direction with less of a footprint than curves. It can also be used to send products to a different lane by use of an external barcode scanner. The HCAT90 can also be used with a triple pick & pass configuration. Here, either one or two conveying lines transports a product to the operator station and then, after its operation, will leave the station via one or two conveying lines, respectively.

- Up to 180FPM on rollers
- Up to 75lbs
- Timing Belt

Roller Set High (RSH) configurations only

MDR Lift operation, no pneumatics required

Timing belt

Roller Set High conveyor surrounding Double & Triple Pick & Pass is required

Double Pick & Pass

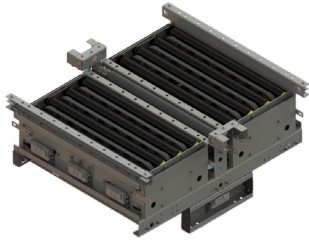
Triple Pick & Pass

KEY FEATURES AND BENEFITS

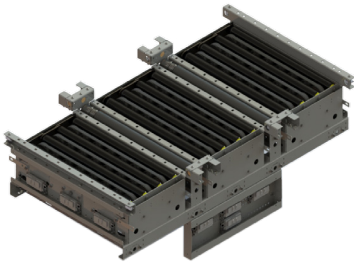
- Rate up to 30 products per min (Conditional on Application).
- Light to medium weight applications up to 75lbs.
- Resilient and durable construction. Perfect for distribution, warehouse, process lines and postal applications.
- Operates in 40° - 104°F.
- Minimum product size 9” x 9” x 0.75”.
- Tool-less mounting brackets for control card components.
- Electrical components have quick connect terminals for easy installations and expansion.
- Programming Required.

DOUBLE / TRIPLE PICK & PASS

Series 1500 Conveyor Module



SERIES 1500 CONVEYOR - DOUBLE PICK & PASS								
Part #	Width (BF)	Gap	Side Channel	Roller Center	MDR Type	Hand	Control	Color
TR15144 (24" Zone) TR15146 (30" Zone) TR15148 (36" Zone)	15, 21, 27, 33, 36	3"	RSL	4"	EC5000	LH RH	AUTO FULL	F9022 F7035
TR15143 (24" Zone) TR15145 (30" Zone) TR15147 (36" Zone)	15, 21, 27, 33, 36	6"	RSL	4"	EC5000	LH RH	AUTO FULL	F9022 F7035



SERIES 1500 CONVEYOR - TRIPLE PICK & PASS								
Part #	Width (BF)	Gap	Side Channel	Roller Center	MDR Type	Hand	Control	Color
TR15150 (24" Zone) TR15152 (30" Zone) TR15154 (36" Zone)	15, 21, 27, 33, 36	3"	RSL	4"	EC5000	LH RH	AUTO FULL	F9022 F7035
TR15149 (24" Zone) TR15151 (30" Zone) TR15153 (36" Zone)	15, 21, 27, 33, 36	6"	RSL	4"	EC5000	LH RH	AUTO FULL	F9022 F7035

Engineer to order options include: Additional BFs, additional zone lengths, other MDRs & gear ratios, custom rail color. Additional options may be available upon request. Contact Trew Engineering for further information.