

Parcel Conveyor

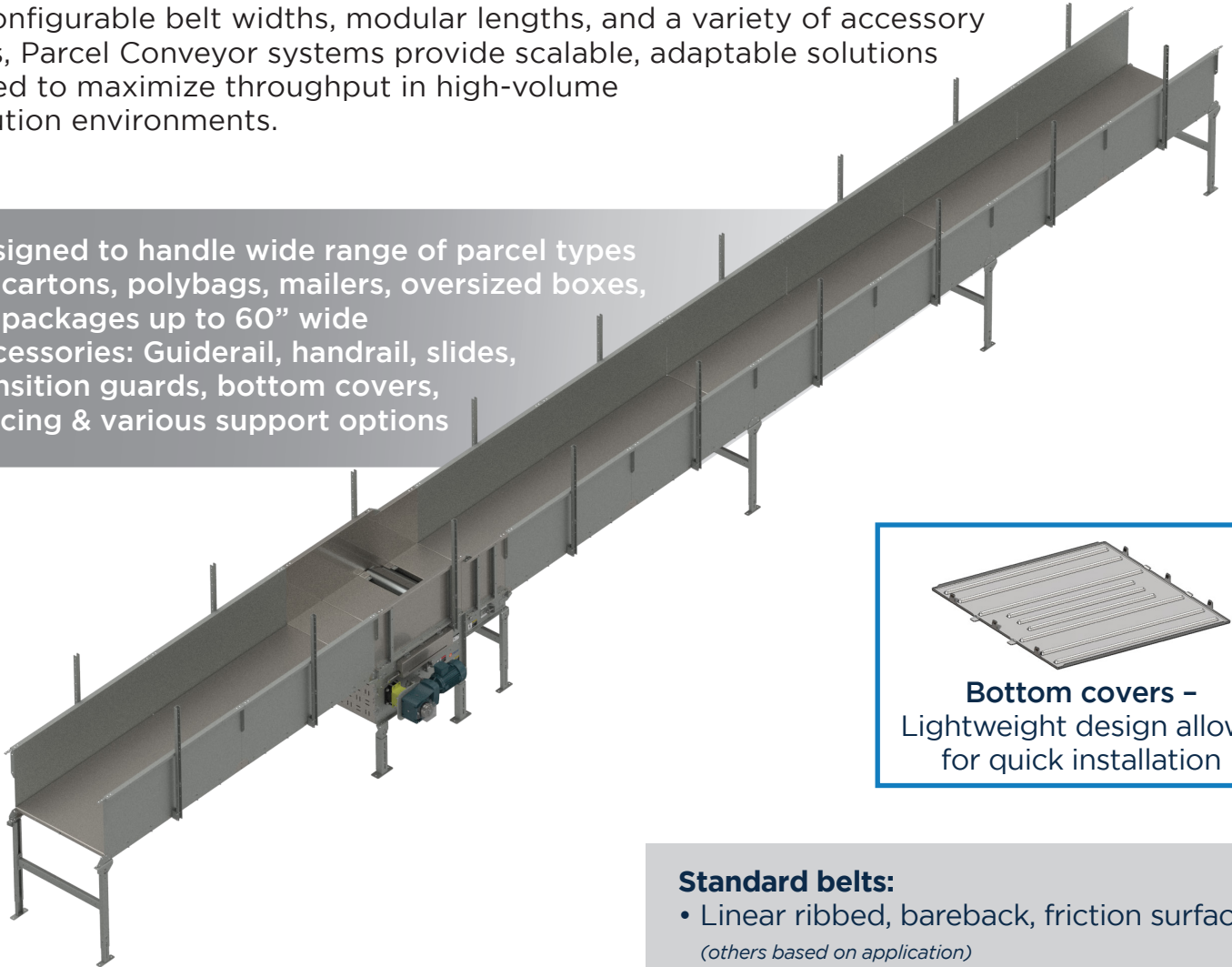
Belt Modules

Controls Platform: AC Motor Powered

POWERED BY
TREW[®]

Parcel Conveyor delivers flexible, high-performance conveying solutions for both bulk and singulated parcel flow, supporting a wide range of applications including transportation, sorting, scanning, and accumulation. Engineered to handle diverse parcel types, from cartons and polybags to oversized packages up to 60" wide, the system ensures smooth, controlled movement to protect product integrity and maintain consistent downstream performance. With configurable belt widths, modular lengths, and a variety of accessory options, Parcel Conveyor systems provide scalable, adaptable solutions designed to maximize throughput in high-volume distribution environments.

- Designed to handle wide range of parcel types
 - » cartons, polybags, mailers, oversized boxes, packages up to 60" wide
- Accessories: Guiderail, handrail, slides, transition guards, bottom covers, bracing & various support options



Bottom covers –
Lightweight design allows
for quick installation

Standard belts:

- Linear ribbed, bareback, friction surface
(others based on application)

KEY FEATURES AND BENEFITS

- Drives come in center or end options for both bulk and singulated flow.
- Singulated drives come with an option for an encoder.
- Low clearance end drives can be chosen for bulk flow applications.
- Noseovers can be articulated up to 25° max.
- Utilizes industry standard componentry for maximum compatibility with existing spare parts programs.
- Ease of maintenance and clear access to minimize component replacement time between sort periods.

Parcel Conveyor

Belt Modules

Controls Platform: AC Motor Powered



Specifications:

- Nominal between frame (BF) widths: 25", 31", 37", 43", 49", 61.5"
- Motor HP: 3, 5, 7.5, 10, 15, 20
- Speeds: 55 to 600 fpm

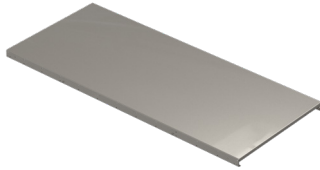
- Optional modules: Standard end / center drive, intermediate, tail, low clearance drive, nose over



PARCEL BELT CONVEYOR - CENTER DRIVE					
Part #	Width (BF)	Hand	Speed (fpm)	HP	Color
TR09002 TR09004 TR09006	25", 31", 37", 43", 49", 61.5"	LH, RH	55 - 600	3, 5, 7.5, 10, 15, 20	F7037



PARCEL BELT CONVEYOR - END DRIVE					
Part #	Width (BF)	Hand	Speed (fpm)	HP	Color
TR09001 TR09003 TR09005 TR09019 TR09024	25", 31", 37", 43", 49", 61.5"	LH, RH	55 - 600	3, 5, 7.5, 10, 15, 20	F7037



PARCEL BELT CONVEYOR - INTERMEDIATE					
Part #	Width (BF)	Hand	Color		
TR09007 TR09008 TR09009 TR09010 TR09011 TR09012 TR09013 TR09014 TR09015	25", 31", 37", 43", 49", 61.5"	LH, RH	F7037		



PARCEL BELT CONVEYOR - TAIL			
Part #	Width (BF)	Hand	Color
TR09016 TR09017 TR09020	25", 31", 37", 43", 49", 61.5"	LH, RH	F7037



PARCEL BELT CONVEYOR - NOSE OVER			
Part #	Width (BF)	Hand	Color
TR09018	25", 31", 37", 43", 49", 61.5"	LH, RH	F7037



PARCEL BELT CONVEYOR - GRAVITY ROLLER			
Part #	Width (BF)	Hand	Color
TR09021 TR09022 TR09023	25", 31", 37", 43", 49", 61.5"	LH, RH	F7037