

MDR SKEW INTERMEDIATE

Series 1500 Conveyor Module

Controls Platform: G20 Full Control & H20 Auto Control

POWERED BY

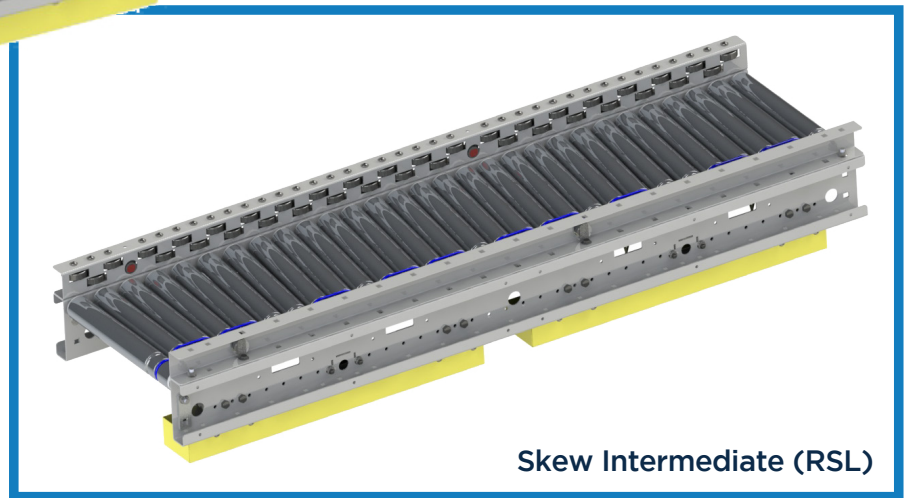
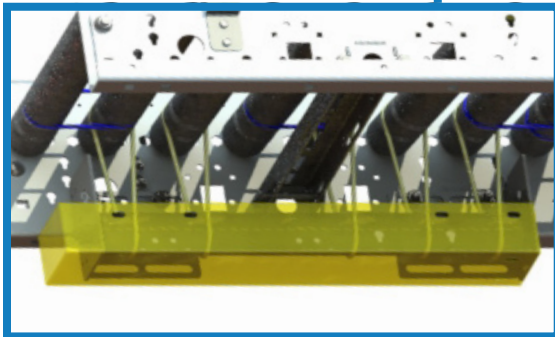
TREW®

The MDR Skew Intermediate Module is used to move products from the centerline of the conveyor to one side or the other. This lateral repositioning of products along the length of the conveyor is accomplished by skewing the bed of rollers such that the vectored component of lateral forces will drive the product into the rail. Moving products to one side, at times, may be desirable when some downstream operation requires the box to be in a specific location. This module is available in 2- and 3-inch centers and Rollers Set High (RSH) and Rollers Set Low (RSL) configurations.

- Up to 180FPM
- O-Band

1.5" of skew per foot standard

Skew Intermediate (RSH)



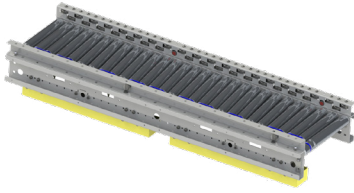
Skew Intermediate (RSL)

KEY FEATURES AND BENEFITS

- Light to medium weight applications up to 75lbs.
- Resilient and durable construction. Perfect for distribution, warehouse, process lines and postal applications.
- Tool-less mounting brackets for control card components.
- 3" Roller center may be ordered as poly-coated.
- Operates in 40° - 104°F.
- Minimum product size 8" x 8" x 0.75" for 3" roller center, 6" x 6" for 2" roller center.
- Electrical components have quick connect terminals for easy installations and expansion.
- Using durable, high tension 3/16" O-bands.
- Available ZPA Analyzer allows for system diagnostic and commissioning.
- Standard IP54.

MDR SKEW INTERMEDIATE

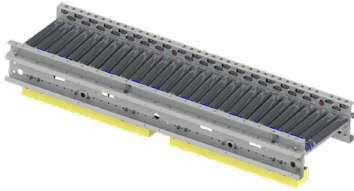
Series 1500 Conveyor Module



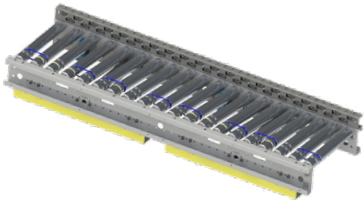
SERIES 1500 CONVEYOR - MDR SKEW INTERMEDIATE, RSL, 24" ZONE								
Part #	Width (BF)	Skew	Side Channel	Roller Center	MDR Type	Hand	Control	Color
TR15029 (48" Long) TR15030 (96" Long)	15, 21, 27, 33, 36	LH RH	RSL	3"	EC5000	LH RH	AUTO FULL	F9022 F7035
TR15035 (48" Long) TR15036 (96" Long)	15, 21, 27, 33, 36	LH RH	RSL	2"	EC5000	LH RH	AUTO FULL	F9022 F7035



SERIES 1500 CONVEYOR - MDR SKEW INTERMEDIATE, RSH, 24" ZONE								
Part #	Width (BF)	Skew	Side Channel	Roller Center	MDR Type	Hand	Control	Color
TR15218 (48" Long) TR15219 (96" Long)	15, 21, 27, 33, 36	LH RH	RSH	3"	EC5000	LH RH	AUTO FULL	F9022 F7035
TR15224 (48" Long) TR15225 (96" Long)	15, 21, 27, 33, 36	LH RH	RSH	2"	EC5000	LH RH	AUTO FULL	F9022 F7035



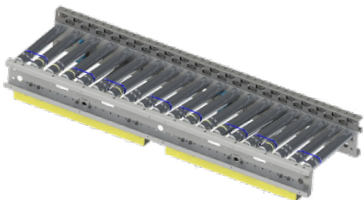
SERIES 1500 CONVEYOR - MDR SKEW INTERMEDIATE, RSL, 30" ZONE								
Part #	Width (BF)	Skew	Side Channel	Roller Center	MDR Type	Hand	Control	Color
TR15031 (60" Long) TR15032 (120" Long)	15, 21, 27, 33, 36	LH RH	RSL	3"	EC5000	LH RH	AUTO FULL	F9022 F7035
TR15037 (60" Long) TR15038 (120" Long)	15, 21, 27, 33, 36	LH RH	RSL	2"	EC5000	LH RH	AUTO FULL	F9022 F7035



SERIES 1500 CONVEYOR - MDR SKEW INTERMEDIATE, RSH, 30" ZONE								
Part #	Width (BF)	Skew	Side Channel	Roller Center	MDR Type	Hand	Control	Color
TR15220 (60" Long) TR15221 (120" Long)	15, 21, 27, 33, 36	LH RH	RSH	3"	EC5000	LH RH	AUTO FULL	F9022 F7035
TR15226 (60" Long) TR15227 (120" Long)	15, 21, 27, 33, 36	LH RH	RSH	2"	EC5000	LH RH	AUTO FULL	F9022 F7035



SERIES 1500 CONVEYOR - MDR SKEW INTERMEDIATE, RSL, 36" ZONE								
Part #	Width (BF)	Skew	Side Channel	Roller Center	MDR Type	Hand	Control	Color
TR15033 (72" Long) TR15034 (144" Long)	15, 21, 27, 33, 36	LH RH	RSL	3"	EC5000	LH RH	AUTO FULL	F9022 F7035
TR15039 (72" Long) TR15040 (144" Long)	15, 21, 27, 33, 36	LH RH	RSL	2"	EC5000	LH RH	AUTO FULL	F9022 F7035



SERIES 1500 CONVEYOR - MDR SKEW INTERMEDIATE, RSH, 36" ZONE								
Part #	Width (BF)	Skew	Side Channel	Roller Center	MDR Type	Hand	Control	Color
TR15222 (72" Long) TR15223 (144" Long)	15, 21, 27, 33, 36	LH RH	RSH	3"	EC5000	LH RH	AUTO FULL	F9022 F7035
TR15228 (72" Long) TR15229 (144" Long)	15, 21, 27, 33, 36	LH RH	RSH	2"	EC5000	LH RH	AUTO FULL	F9022 F7035

Engineer to order options include: IP67, additional BFs, other MDRs & gear ratios, custom rail colors, poly-V belts. Additional options may be available upon request. Contact Trew Engineering for further information.