

# MDR BELTED SCAN BED

## Series 1500 Conveyor Module

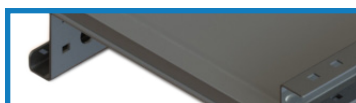
Controls Platform: G20 Full Control & H20 Auto Control

POWERED BY

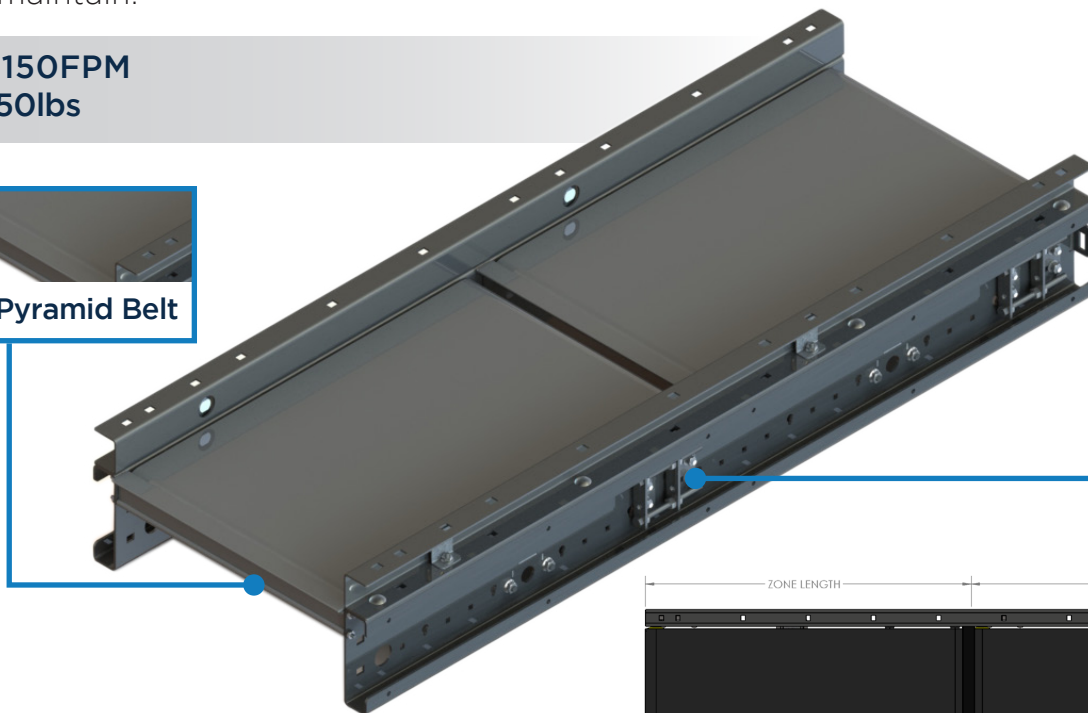
**TREW**<sup>®</sup>

MDR belted scan bed modules have a high friction belt that holds product in location and helps maintain product alignment, perfect for print and apply applications and small and light products and bags. Removeable guide rails allow for easy external mounting of scanners. Pre-wired conveyor sections are networked with bus technology and easily configured for multiple applications. All electric operation ensures a consistent and quiet system that is easy to maintain.

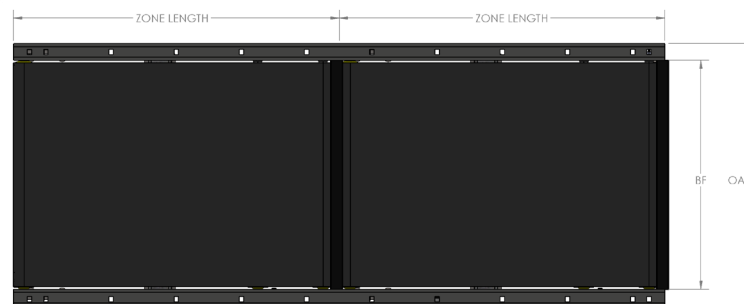
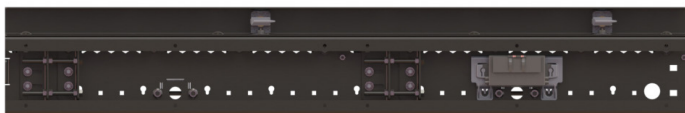
- Up to 150FPM
- Up to 50lbs



Negative Pyramid Belt



Take Up Brackets mounted on side channel to loosen or tighten belts

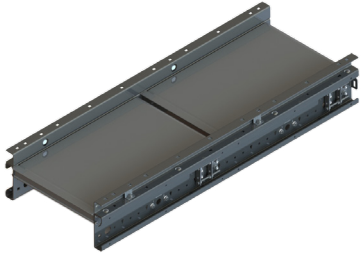


## KEY FEATURES AND BENEFITS

- Sensitive Product Handling.
- Take Up Bracket Per Zone for Belt Alignment.
- T-Strip between belts for smaller products transition.
- Ultra Co-Efficient Belt Surface for higher traction & durability.
- Light to medium weight applications up to 50lbs.
- Resilient and durable construction. Perfect for distribution, warehouse, process lines and postal applications.
- Durable, high tension belt.
- Operates in 40° - 104°F.
- Minimum product size 4" x 4" x 0.75".
- Removable guard rail allows for externally-mounted scanner & photoeye.
- 5.5" tall side rail with 2" guard rail to match up with standard RSL rail.
- Tool-less mounting brackets control card components.
- Electrical components have quick connect terminals for easy installations and expansion.
- IP54 Standard.

# MDR BELTED SCAN BED

## Series 1500 Conveyor Module



SERIES 1500 CONVEYOR - MDR BELTED SCAN BED						
Part #	Width (BF)	Side Channel	MDR Type	Hand	Control	Color
TR15051 (48" OAL, 24" Long)	15, 21, 27, 33, 36	RSH*	EC5000	LH	AUTO	F9022
TR15052 (60" OAL, 30" Long)				RH	FULL	F7035
TR15053 (72" OAL, 36" Long)						

\*5.5" RSH Rail with 2" Guard Rail

*Engineer to order options include: Additional BFs, additional zone lengths, other MDRs & gear ratios, alternative photoeye locations, RSH (5.5" frame depth), food grade belts/textures, split zones, custom rail colors. Additional options may be available upon request. Contact Trew Engineering for further information.*